



MAY 2025

32°43'N

117°10'W

VOL LIII, No 5



GUILD OFFICERS

[Steve Miller](#)

Guild Master

[Steve Scheet](#)

First Mate

[John Walsh](#)

Purser

[Karl Zingheim](#)

Log Keeper

[Alex Roel](#)

Newsletter Editor

COMMITTEE CHAIRS

[John Walsh](#)

Web Master

[Chris Sullivan](#)

Photographer

[John Walsh](#)

Presentations

[Jon Sanford](#)

Model Shop

[Isaac Wills](#)

Youth Coordinator

[Steve Scheet](#)

Fair Coordinator

[John Walsh](#)

Community Build

FAIR WARNING!

Here it is May already and time for every good modeler to turn their focus to the upcoming San Diego County Fair.



As Guild Members we have a variety of ways to participate and enjoy this annual rite.

We can volunteer to work the Guild booth for one or more days, help with booth set-up and/or tear-down, enter a model in the *Design In Wood* event, or simply wander by the booth and say hello to fellow Members.

If you *are* entering a model in the Fair, we have the information you need at [Around the Scuttlebutt](#). If you'd like to volunteer for the Guild booth please contact Fair Coordinator [Steve Scheet](#).

This summer will mark the Guild's 33rd appearance at the Del Mar Fair... uh, San Diego County Fair. For more history on the Guild's early days at the Fair, check out the [June](#) and [July](#) 1991 issues of the Newsletter.

Next month we'll be publishing Chuck Seiler's annual guide to fielding the most commonly asked questions of booth workers, so if you are volunteering for this year's Fair this article will be one to check out.

Alex



MMSD Supporter

San Diego Ship Modelers Guild
1492 North Harbor Drive, San Diego CA, USA 92101
sdshipmodelersguild.org

founded 1971 by Bob Wright and Russ Merrill



NRG Chapter Club

Another cool and windy “Haze Gray”¹ morning. Here I sit pondering the lack of an ENTERPRISE in America's great Navy, and I am faced with the “inevitability of time”.

CVN-80 is planned to launch this year and be commissioned in 2029. She will be the ninth ship of the American Navy² to carry the name ENTERPRISE (she will also be the third aircraft carrier thus named.) Yet that seems like a long time from now. If you started a build today, would it be ready by 2029? If it's a wooden plank-on-bulkhead model being considered, *my answer* would be a resounding maybe. *If I* hustle.



In This Issue

- ☑ [Fair Warning!](#)
- 🚢 [From the Quarterdeck](#)
- 🌐 [A Long-Distance Connection](#)
- 🚢 [A Sea Shanty](#)
- 🔔 [Last Meeting](#)
- 🔔 [Show and Tell](#)
- 🚢 [Flotsam and Jetsam](#)
- 👤 [2024 Member of the Year](#)
- 🚢 [Easter Egg Reveal #1](#)
- 🚢 [Captain's Bookshelf](#)
- 🚢 [Home Port](#)
- 🚢 [The Bitter End](#)

Let's face it, in many cases our builds can take a great amount of time to complete. Are there ways to speed up the process? The answer is absolutely.

Through the Nautical Research Guild's [Model Ship World](#) forum you have access to the experience and time-saving tricks of some of our craft's most accomplished builders. Making a mistake can be time consuming — but you can learn from others' experience *and* save some time (and heartache.) Trying to figure out how to make sails? Do you try a few long-winded (see what I did there?) approaches yourself,

or might a couple hours researching proven techniques be helpful? Given that a single sail can take hours to make, well...

¹ The official US Navy "Haze Gray" color code is FS 26270.

² Technically the first was in service of the Continental Army, but we'll let her count for our purposes.

But, are those same secrets available right here in our own Guild? Quick and proven weathering techniques... planking concepts like lining off a hull... the use of power tools like scroll saws and Dremels... I say absolutely! — artists use many brushes, and we all have a trick or two up our sleeves.

So for the next and future meetings, in addition to our projects in [Show and Tell](#), let's also start to show and tell all those tricks that save you time and expedite that build. Demonstrate your technique for the rest of the Guild. Our [Mission Statement](#) includes "providing a forum for the exchange of ideas, information, skills and techniques." So let's do that more often if we can.

Bring in some tools. Show us your tricks. Buy us some time.

Set the watch, folks (and bring those ships to life!)

Steve





Patrick “Paddy” O’Hare, a member of the Model Shipwrights of Western New York, visited the Maritime Museum of San Diego in January while on vacation. He was greatly impressed with the Museum as a whole, but especially with our Model Shop and the work of our Members.

After returning to his home in Ottawa, Ontario, Paddy reached out to me as Guild Master, inviting us to give a presentation at one of their guild meetings. If you think that I am getting my geography wrong here, I



am not — Paddy is one of a great many remote members of his guild, and their monthly meetings are set up to allow for virtual presentations. It’s pretty cool!

Because of scheduling conflicts, the presentation didn’t happen until after our annual Officer’s Election, so both current Guild Master Steve Miller and myself joined their March 20 meeting. Between the two of us, we shared the history, accomplishments, and ongoing work of our Guild.

Their leadership and members were impressed with the breadth of our Guild: the mediums we work in, the ages of our Members, the content of our presentations, the eras of ships that we represent through our work, the ways we promote our craft. They were definitely amazed that we have a physical, working Model Shop that also serves as a means to connect to the general public: I sometimes think we take for granted how amazing a resource that space is!

Our time with their guild served as a wonderful forum for an exchange of ideas. They found great inspiration in our Mini-STAR Project, and Steve and I learned a whole lot about the logistics and possibilities in having a virtual component to Guild Meetings.

Of particularly great value to Steve on a personal level was getting to meet and see the faces of several modelers that he has followed and interacted with on the NRG’s [Model Ship World](#) forum. This really showcased the rewards of embracing modern communications as part of our hobby.

In all it was a great experience, and we look forward to potential future exchanges between our two guilds. In the meantime, if you want to learn more about the Model Shipwrights of Western New York, [visit their website](#).

The Sailor's Way

Listen to it on
 YouTube

We've courted gay Peruvian girls, French girls an' Chinese
Spanish girls an' Dutch girls too an' dainty Japanese
To far Australia, Honolulu, where Hawaiian maidens play
Just a different girl in every port – An' that's the sailor's way

Then it's goodbye, Acushla
We're off to sea again
Sailor Jack always comes back
To the girl he's left behind!

In calm or storm, in rain or shine, the shellback doesn't mind
When ocean's swell, he'll work like hell, for the girl he's left behind
He beats in north, he runs far south, he doesn't get much pay
He's always on the losing end – An' that's the sailor's way

CHORUS

Oh, shinin' is the North Star, as it hangs on the starboard bow
We're homeward bound for Liverpool town, our hearts are in it now
We've crossed the Line and then the Gulf Stream, been 'round by Table Bay
We've rounded Cape Horn, home again – An' that's the sailor's way

CHORUS

We'll get paid off in Liverpool, an' blow our money free
We'll eat an' drink an' have our fun, an' forget the ruddy sea
Oh, Johnny will go to his sweet Marie, an' Pat with his 'cushla play
But I'll get drunk an' into in me bunk – An' that's the sailor's way

CHORUS



Last Meeting



The April Guild meeting was attended by 23 Members¹ and 2 guests²; all Officers except the First Officer were present. No new Members joined the Guild.

Karl Zingheim, our Powder Monkey, rang the bell at 6:00pm to signal the start of the second dog watch.



Steve Miller opened his first full meeting as Guild Master sans his First Officer (and Fair Coordinator) Steve Scheet who apparently thought vacationing in Mexico sounded like the better option.



The Guild Master polled the attending Officers for business reports of which only an update of the status of the upcoming 2025 San Diego County



Fair was offered by Steve himself. With the booth volunteer roster nearing completion, Steve also reminded Members of the April 30th deadline for entering models in the *Design In Wood* competition.



Opening the floor to Members, Tom Hairston reported that currently 620 Mini-STAR kits have been completed and are now ready for this year's Fair. Tom's helpers included his friend Carmen Hughes who found she quite enjoyed using a drill and bandsaw, and Member Glenn Clausson who assisted by printing 300 instruction sheets.



Steve then turned the floor over to former Guild Master John Walsh who delivered a heart-felt introduction to our very deserving [2024 Member of the Year](#).



¹ Arroyo, Clausson, Dressel, Flores, Hairston, Jones, Lonneckner, López de Arenosa, McKinley, Miller, Moore, Pizzuto, Roel, Sanford, Seiler, Sellen, Sullivan, Tamayo, Walsh, Yotter, Yumoto, Zamora, Zingheim

² Liz Hua, Ray Hummell

With shafts of setting sunlight brilliantly illuminating the length of the BERKELEY's upper deck, the Guild Master opted to hold [Show and Tell](#) first and move the scheduled presentation by Paco López de Arenosa to follow the customary break after the sun had set.

Sunlight issues sorted, Paco delivered his slide presentation about his recent trip to Oman to study the history and building techniques of dhows.

Paco described the general characteristics of the dhow as a wooden sailing vessel with one, two, or three masts bearing triangular sails rigged lateen-fashion.

These boats were the workhorse of the Arabian Sea and more broadly the Indian Ocean.



They took advantage of seasonal trade winds, which would cycle from an eastern breeze to a westerly one, allowing for a triangular trade pattern between Oman, Tanzania, and India, much like the old trade triangle of Africa, the Caribbean, and England.

At their peak, dhows travelled as far as Malaysia and Indonesia in the Eastern Indian Ocean, acquiring tropical woods for shipbuilding and leaving behind Muslim missionaries.

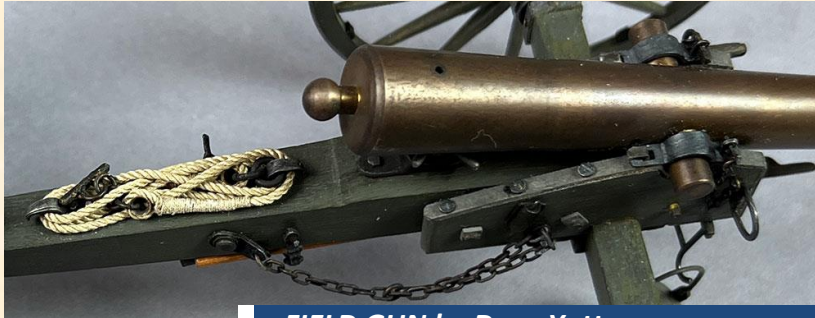
Paco noted that working dhows are not in much use today; those afloat are mostly replicas built for the tourist industry as tour boats or floating restaurants.

At exactly 7:53pm the Powder Monkey rang the ship's bell and brought our April meeting to a close.

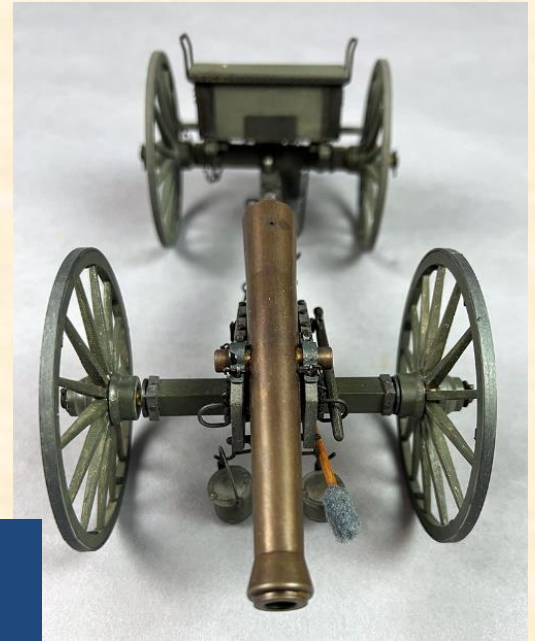


Last Meeting's Show and Tell *photography by Chris Sullivan*

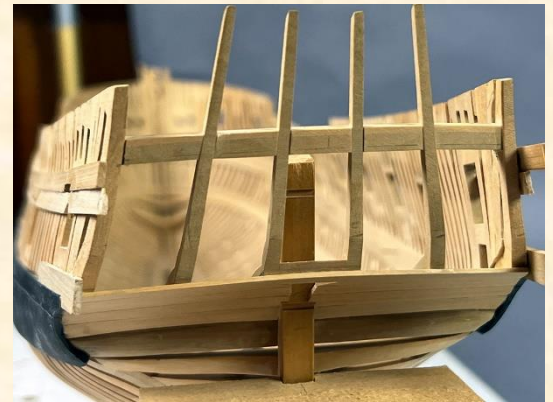
Dave Yotter's Show and Tell piece was not a naval but rather a field gun with limber. This kicked off a lively discussion among Members about recoil ranges and gun crew complements.



- **FIELD GUN** by Dave Yotter
- *Model Trailways kit, wood and brass*
- $3/4"=1'$ 1:16, completed



Mike Lonnecker's FLY made a long-anticipated appearance after gracing the pages of *TSDW* these many months in his serial article "[Tales of the FLY](#)". Members got a good chance for an up-close look at this fully-framed scratch build. Mike also brought in some mylar plans from which he works, based upon the four book series [The Fully Framed Model](#), by David Antscherl and Greg Herbert.

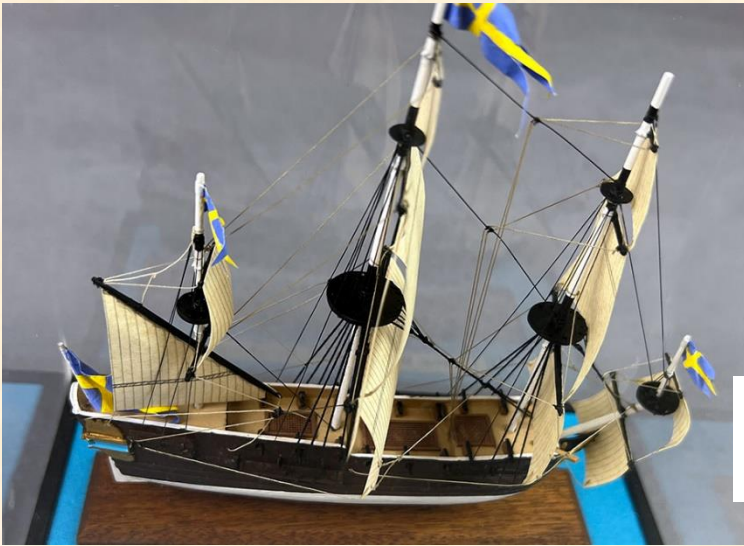


Of special note was the hand-carved figurehead of the god Mercury with intricate detailing carved by Mike's friend Tony Devroud.



- **FLY** by Mike Lonnecker
- *scratch build, plank-on-frame, boxwood*
- $1/4"=1'$ 1:48, under construction





Don Dressel appeared this month with a small model of Swedish frigate that was built by and gifted to him from his friend Norio Uriu of Japan. Don pointed out the lovely detail and rigging on such a small scale and the inclusion of stuns'ls.

- *SWEDISH FRIGATE* by Norio Uriu
- *scratch build, wood*
- *unknown scale, completed*

Don also brought in an unstarted NRG “Masting and Rigging” kit with instructions and offered it to any Member who was interested in tackling it: Niko McKinley’s hand soared into the air and Don (one of our oldest Members) bestowed the kit on Niko (one of our youngest Members.) We sail on. ☠

Mike Florio presented a sectional diorama of TITANTIC lifeboats on deck. This is a completed scratch build and is one of many TITANTIC-related models Mike has made over the years. Mike represents the two main kinds of lifeboats on deck: the standard 30’ clinker-style lifeboat and the smaller 27’ Engelhardt collapsible lifeboat.

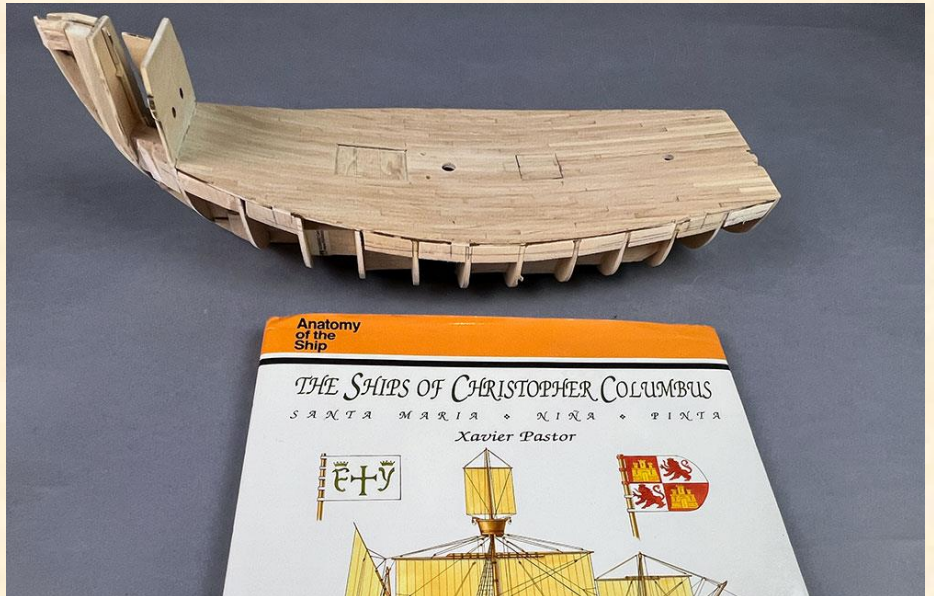


- *TITANIC LIFEBOATS* by Mike Florio
- *scratch build, wood*
- *1/4"=1' 1:48, completed*

Chuck Seiler brought in his “Fair project” SANTA MARIA sporting a nicely curving main deck leading to the forecastle... uh... quarterdeck... uh?

Anyways, it’s looking nice!

Chuck notes “This is supposed to be an ‘improved version’ of the kit, but the only thing improved I see is that the instructions are on a CD instead of paper. Double plank-on-bulkhead, but I will single plank. Some of the planking features above the main deck make it very clunky. Because of this and the poor plans provided, I will be bashing the kit, using plans from [The Ships of Christopher Columbus](#) by Xavier Pastor.”



“‘Fourteen Hundred and Ninety Two, Columbus sailed the ocean blue.’ Yada Yada Yada. Nobody really knows what SANTA MARIA, or any of the other ships, looked like, exactly. There have been hundreds of paintings and renditions, but none from anybody observing it, including sketches. Pastor uses information from historical records and ship building practices of the date/place to narrow down three possible replicas. The Spanish Naval Institute of History and Culture viewed the 1964 Martinez-Hidalgo replica as the most probable as the template for the 500th Anniversary replicas built in 1991.”

- SANTA MARIA by Chuck Seiler
- Artesania Latina kit, plank-on-bulkhead, wood
- 3/16"=1' 1:64, under construction

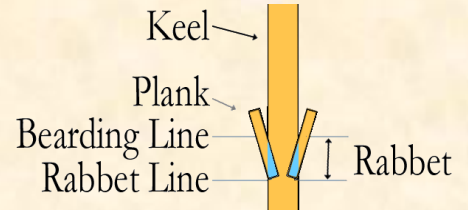
Flotsam and Jetsam

"Well, I feel so broke up, I want to go home"

The Beach Boys, Sloop John B, 1966

Squared Away – understanding nautical terms

The **RABBET** is the area of keel cut out to accept the GARBOARD STRAKE and is defined top and bottom by the BEARDING LINE and the RABBET LINE respectively.



Build Gallery ★ ★ ★

Members are invited to submit completed builds to Webmaster [John Walsh](#) for inclusion in our website's BUILD GALLERY. Provide the name of your vessel, circa depicted, scale, materials, and whether built from scratch, kit or bashed. Be sure to include a full view photo along with detailed supporting photos.



Around the Scuttlebutt – latest Guild news



VOLUNTEERS: Sign-ups for manning the Guild's Booth at the 2025 San Diego County Fair continues: [check available volunteer dates here](#) and contact Fair Coordinator [Steve Scheet](#) with your selections.



MODEL ENTRANTS: You must register and pay (\$30) for your entry no later than 8pm on April 30. Scale models should be entered in Class 009 and Not-to-Scale models in Class 010. Entry is *only* via the [online site](#).



Whispers belowdecks are that five models have been submitted so far for this year's Fair from Phil Pizzuto, Doug Ward, Mike Lonneckner, Tom Hairston, and Steve Scheet.





Thanks to James Pitt, Guild shirts, hats, and name tags can now be purchased via [Purser John Walsh](#). John is working on implementing a live order form in the near future that will be accessible via our Website's [Sea Locker](#).

Currently available are the following items:

- ☞ Member name tag (white plastic w/logo, pin- or magnet-backed) \$10
- ☞ Hat (black w/logo) \$19
- ☞ Short-Sleeved Polo Shirt (blue w/logo, S/M/L/XL/2XL/3XL) \$30-\$32
- ☞ Long-Sleeved Cotton Shirt (blue w/logo, S/M/L/XL/2XL/3XL) \$19-\$21



Recently a model shipcrafter from San Antonio reached out to our Guild with a modeling question concerning rigging mast hoops. Guild Master Steve Miller forwarded the particulars to Members and promptly received enlightening responses from Members Chari Wessel, Howard Griffus, and Isaac Wills. Steve compiled and forwarded all of the information to the modeler, including these detail pictures of Chari's.



Congrats to all for helping the Guild live up to our [Mission Statement](#).



New Member Paul Moore is also a member of the [Gdansk Model Builders of Arizona](#) who are working together on a historical diorama of Gare du Havre and Le Havre Harbor featuring NORMANDIE and PARIS. Check it out!

On The Horizon

MAY 6	6pm	Officers Meeting	online
MAY 7	9am	SDCF booth set-up	Del Mar Fairgrounds
MAY 13	4pm	Community Build Meeting	BERKELEY
MAY 13	6pm	Guild Meeting	BERKELEY
MAY 20	noon - 8pm	SDCF model entry (drop-off)	Del Mar Fairgrounds
MAY 27	—	<i>The Second Dog Watch</i>	Website, email
JUN 3	6pm	Officers Meeting	online
JUN 10	4pm	Community Build Meeting	BERKELEY
JUN 10	6pm	Guild Meeting	BERKELEY
JUN 11 - JUL 6	11am - 6pm	San Diego County Fair (booth volunteering)	Del Mar Fairgrounds / Design In Wood
JUN 24	—	<i>The Second Dog Watch</i>	Website, email
JUL 1	6pm	Officers Meeting	online
JUL 8	4pm	Community Build Meeting	BERKELEY
JUL 8	6pm	Guild Meeting	BERKELEY
JUL 8	noon - 8pm	SDCF model entry (pick-up)	Del Mar Fairgrounds
JUL 11	9am	SDCF booth take-down	Del Mar Fairgrounds
JUL 29	—	<i>The Second Dog Watch</i>	Website, email



photo by Chris Sullivan

Mike Lonnecker

In the long history of the Commander John C Mathews Award, there has never been a two-time recipient: heretofore it has been awarded to a different Guild Member each year for exemplary service. Well, get ready to update your old copies of *SDSMG Trivial Pursuit*, because now the correct answer to the question “Who was the very first person to be twice-honored as Member of the Year?” is none other than Mike Lonnecker.



While Mike is the definition of a master ship modeler, it was no surprise when he was originally honored in 2015 as a recipient of the Commander John C Mathews Award. Pull up the [Guild's Bylaws](#), peruse our archives of presentations, read through [past issues](#) of *The Second Dog Watch* — even before it had a title — and you will see Mike's name over and over again. Truth is, his incredible level of hard work and dedication to the Guild has never stopped, and 2024 was no exception.

Mike's multi-part series “*Tales of the FLY*” has been a major highlight of *TSDW*. Through it he has shared a great wealth of knowledge gained through experience, which helps other modelers to learn through practical application of useful techniques. When people outside our Guild comment on the incredible quality of our Newsletter, Mike's articles have been cited as a huge contribution

informing their opinion.

The fourth Community Build project was only able to get started because of Mike's willingness to coordinate with the Nautical Research Guild to secure "Masting & Rigging" kits on behalf of our Members. In addition, Mike has been a regular presenter at the Community Build meetings, selflessly sharing related knowledge and techniques despite not being a part of the build project himself. (This is on top of also giving several presentations at the general Meetings over the past two years, for which he was honored with a Certificate of Recognition for "Most Informative Technical Demonstrations" at the 2024 Holiday Party.)

Even without counting his "above and beyond" contributions, Mike is a consistent presence at our monthly Meetings, regularly sharing through Show & Tell, giving solid advice and feedback to those who ask for it, and helping fellow builders in any way that he can.

If all of this wasn't enough, just ask anyone who has ever called, texted, or emailed Mike with a question — they will tell you that he gladly and freely gives of his time to work with you, even if he is on vacation at the time. He doesn't do this for glory, out of ego, or to be honored; it's his passion for the craft and a genuine desire to keep it alive and pass it on to others. For him, it is truly a pleasure to be of service to his fellow Guild Members.

And now it is *our pleasure* to once again present Mike with the Commander John C Mathews Award, which forever honors and proudly proclaims him as our



2024 Member of the Year

Reveal #1: This month we reveal the first, hiding in plain sight one year ago on the *Last Meeting* page of the May 2024 issue. Every month the left border of the *Last Meeting* page features a string of [International Code of Signals](#) (ICS) flags. These flags are not only pretty... they have something to say.



The Bitter End

Our Founders

The Guild was founded in 1971 b

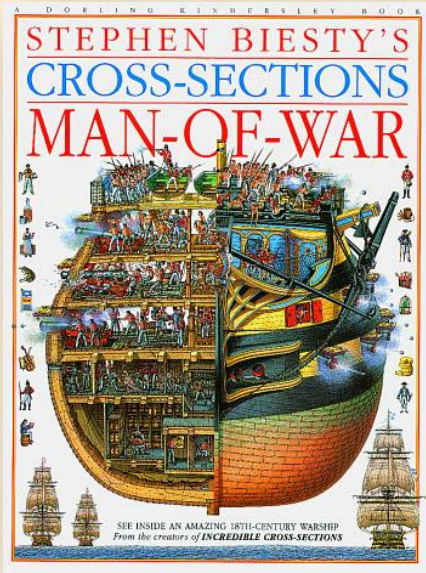
Also for you hunters: you'll know future issues of **TSDW** have an Easter Egg when *The Bitter End* page features this egg graphic.

PAGE 16



Cross-Sections: Man-Of-War

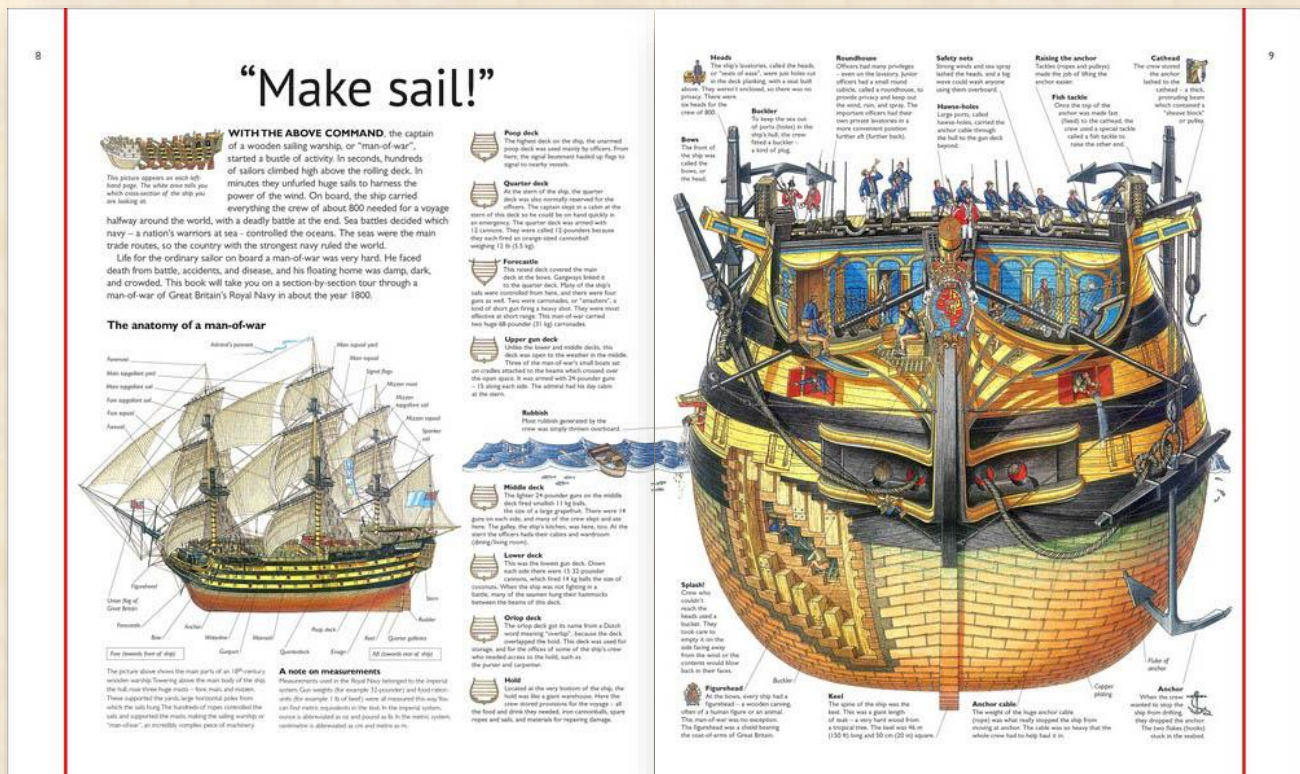
by Stephen Biesty | published 1993 | 32 pages



“Call this a children’s book if you like but I found this wonderfully illustrated book to be very useful in understanding how the hundreds of different parts of a ship are situated and relate to one another.”

Guild Member Alex Roel

This brief coffee-table-top-sized book is jam-packed with information and dozens of very informative drawings detailing exactly how a man-of-war is put together, from the false keel to the Admiral’s pennant. The cross-sections reveal in amazing (and oftentimes humorous) detail the relationships and functions of the various areas of the ship. The drawings are supplemented with a wealth of contextual information that help to identify, illuminate and reinforce nautical terminology in the reader’s mind.





San Diego Bay, January 30 2022, 9:18am

Thanks to our sponsor, the Maritime Museum of San Diego, the San Diego Ship Modelers Guild is fortunate to call not only San Diego Bay our home, but also the steam ferry BERKELEY, part of the Museum's fleet tied up on San Diego's Embarcadero.





Our Founders

The Guild was founded in 1971 by Bob Wright and Russ Merrill in collaboration with Ken Reynard, Captain of the barque STAR OF INDIA.

Mission Statement



The [San Diego Ship Modelers Guild](#) is dedicated to the preservation and enhancement of the craft of building scale ship models and to providing a forum for the exchange of ideas, information, skills, and techniques.

Maritime Museum of San Diego



The Guild encourages all Members to join and maintain an annual membership in the [Maritime Museum of San Diego](#). As our sponsor, the MMSD provides the Guild space aboard the steam ferry BERKELEY to hold monthly meetings; allows us to work in, store supplies, and maintain the Museum Model Shop; and annually awards Guild entrants ribbons and cash prizes for the Design In Wood competition at the San Diego County Fair.

Nautical Research Guild



The Guild also encourages all Members to join and maintain an annual membership in the [Nautical Research Guild](#). As a chartered Chapter Club, the NRG accords certain benefits, privileges, and protections to our Guild.

Piracy in Model Shipcrafting

Although there is no single, agreed-upon definition of what constitutes "piracy", the use of another's intellectual or physical property without recompense is the basis for any working definition. Unfortunately, this is an issue that affects our craft: be scrupulous and avoid purchasing pirated kits or materials.



Back Issues

Back issues of *The Second Dog Watch* are accessible via the [Newsletter Archive](#) which has digital copies dating back to Volume I, Issue 1 (May 1977.)