



December 2023

NEWSLETTER

VOL. 51, NO. XII

GUILD OFFICERS

Guild Master

[John Walsh](#)

First Mate

[Tom Hairston](#)

Purser

[Jon Sanford](#)

Newsletter Editor

[Karl Zingheim](#)

Log Keeper

[Isaac Wills](#)

COMMITTEE CHAIRS

Web Master

[Alex Roel](#)

Presentations

[Karl Zingheim](#)

Model Shop

[Jon Sanford](#)

Photographer

[Chris Sullivan](#)

Tidings of Joy



Paco Arenosa, Art Arroyo, Frank Dengler, Don Dressel, Zander Fettel, Tom Hairston, Guy Lawrie, Steve Miller, Alex Roel, Jon Sanford, Gary Seaton, Chuck Seiler, John Walsh, Isaac Wills, Dave Yotter, and Powder Monkey **Karl Zingheim** attended the November meeting. We were excited to meet **Noland and Brooke Lee** who brought their children to attend. Later we were joined by professional modeler **Glenn Claussion**. John's parents, John and Vicki, joined us from the galleries nearby.

After opening introductions, Tom alerted everyone about next summer's Del Mar Fair and the need to have a strong showing of wood ship models to help keep the category alive for future seasons. Guild Master John turned to the *Star of India's* 160th birthday cruise the weekend before and provided a stirring slide show on our favorite tall ship's jaunt off San Diego Bay. We are proud to note that Guild Members Zander Fettel and Isaac Wills are qualified topmen on the *Star!*

A brief discussion ensued about the nature of the next meeting's Christmas confections and a simple spread was decided as the best option.



The San Diego Ship Modelers Guild is affiliated with and supports the
Maritime Museum of San Diego
1492 N. Harbor Drive, San Diego, CA 92101



From the Quarterdeck by the Guild Master

Ahoy, guild members!

It's hard to believe that we've already reached the end of the year, but here we are with less than a month to go before we pull our 2023 calendars off the wall and pin up 2024's. As I look back, I'm proud of what we've accomplished as a guild. Some highlights:

We've brought back presentations as a regular part of our monthly meetings. This was a goal for the year, and I'm thankful for all the members who have been willing to pitch in their knowledge and time to serve the guild in this way. Thank you in particular to Paco Arenosa, Isaac Wills, Mike Lonnecker, Alex Roel, and Chuck Seiler for going above and beyond for your fellow guild members. We greatly appreciate it!

We had a wildly successful fair presence. Thousands of visitors got to witness firsthand the incredible craftsmanship of our work through the award-winning models on display and our small army of on-site volunteers. In fact, many of our newest members found us through the Design in Wood exhibition! Speaking of...

Thanks to our Mini-Star kits, we have now started to welcome a whole new generation of ship modelers. This summer, David Gary joined our ranks before returning home to Florida, where he continues to contribute to the guild remotely. Last month, we met Trystan and his father, Nolan, who will both be applying to become members at the December meeting. How great it is to know that we are passing our hobby on to such eager young souls!

We're looking ahead to the future. Next year, some members of the guild's leadership will be taking on "apprentices" to train them in key positions. Alex Roel has already convinced me to learn the ropes to eventually take over some day as Webmaster. Also, Jon Sanford has decided that this will be his last year as our Fair Coordinator. If you would like to serve the guild in one of its most important roles, this is your opportunity to work and learn alongside Jon in 2024 before then taking over in 2025. Contact me or him directly if you are interested.

I look forward to seeing you aboard the *Berkeley* on Tuesday, December 12, for our last meeting of 2023. It will feature a presentation by Mike Lonnecker on Masting and Rigging — the latest in our ongoing "Scratch That!" series — as well as some holiday treats.

Fair winds and following seas,

John Walsh
Guild Master



Happy 160th Birthday, Star of India!



SDSMG Welcomes the Lee Family!



The Lees encountered the Guild at our Del Mar Fair booth and their son Trystan was given a Mini-*Star* kit to begin his venture into ship modelling. During the November meeting, at right, he presented his completed *Star of India*. Trystan was then presented a *San Salvador* kit as his next project.



This Month's Presentation: "Choice Materials"

November's "Scratch That" feature was a compilation of building materials that our various members have found both uncommon, but advantageous, in crafting ship models.

John Walsh selected the skein of miniature cordage that Isaac Wills gave him for its superior look on a finished model compared to line provided in most kits, and for its ease of application.

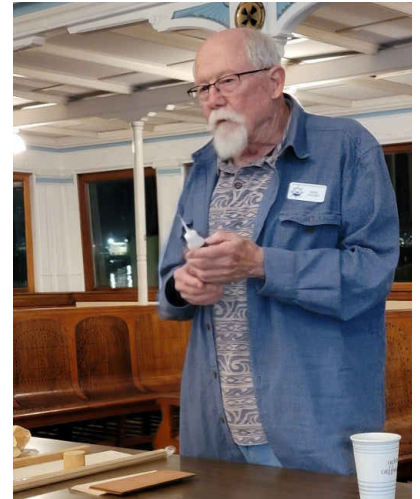


Don Dressel in a similar vein praised the rare Cuttyhawk pre-bees' waxed linen line. It came in various sizes, which is an important consideration since actual rigging can feature eight different sizes on a real ship. Next, Don showed his cuttings and strips of boxwood, an adaptable wood he prefers for built-up projects and delicate carvings. For deck planking, lemonwood and holly in sheet form are most useful. For sails, Don works with precut and sewn cloths, but a particularly favorite material is drafting linen. Washing the linen helps weather it and applying diluted white glue to the washed surface adds realism.



This Month's Presentation: "Choice Materials" continued

Dave Yotter presented Star Bond CA glue which is formulated for working on wood projects. It comes in clear, white, black, and dark brown. Like most CA's, this brand also provides accelerants, de-bonders, and is odorless. A wood species called *sapele* resembles teak in miniature and is fantastic for planking.



Steve Miller described a wood filler he's found that can take on oil just as well as the wood itself. For his plastic work, the old fashioned tube glues of his youth have been replaced with Tamiya liquid cement, an adhesive that uses its thin consistency to weld plastic parts together, particularly long sections like hull halves, by capillary action. This company also produces a panel line accentuator that takes the work out of concocting a wash by hand.

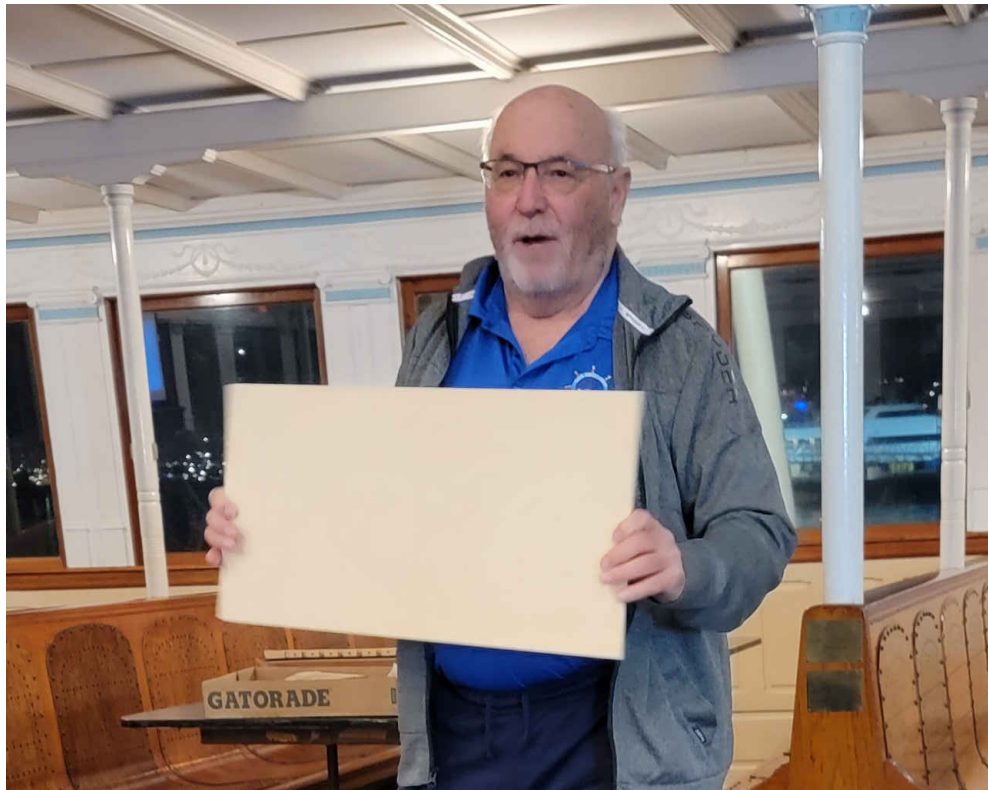


Chuck Seiler brought in a miniature threaded collar that is important for safely securing a model to a base without resorting to common carpentry implements. This McMaster Carr device permits a snug attachment from inside a completed model.



This Month's Presentation: "Choice Materials" continued

Art Arroyo turned to sheets of birch wood and bass wood. As a new wood builder, he prefers the easy of crafting these fine grained species offer, and the relatively affordable price is a distinct advantage as well for the scratch building he prefers. Another factor for his preference is the large size sheets that can easily be acquired on the retail market.

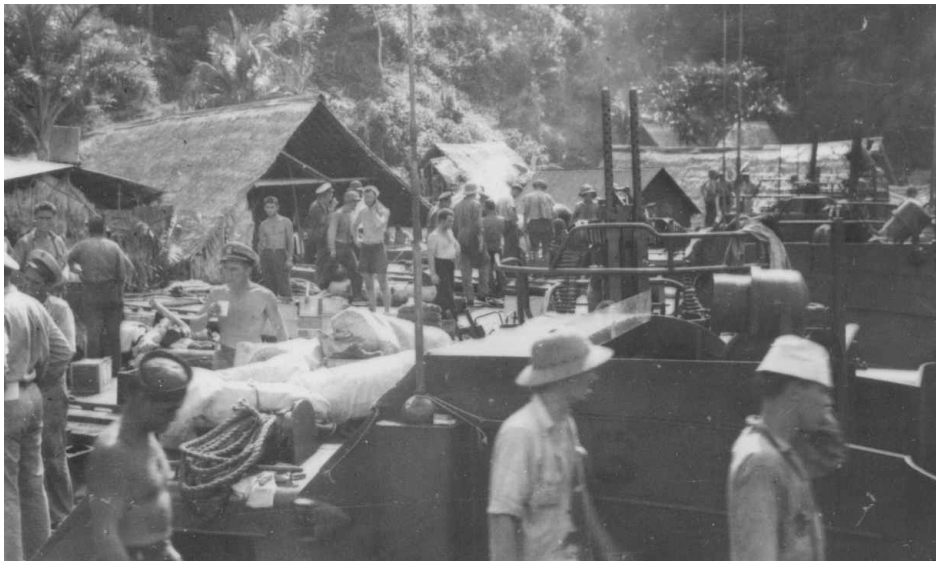


We appreciate the generous participation of these members in sharing what works for them in building ship models and look forward to the next special installment of "Scratch That!"

A Modeler's Tale

Recently, Guild Master John Walsh was contacted by author and model restorer Rob Napier inquiring about the model crafter who had constructed a scale rendering of the World War II destroyer *Gridley* in Coronado decades ago, one E. B. Childs. A neighbor of Rob's recalled his family being presented the model when he was very young, and although his own father had commanded the *Gridley* during the war, the neighbor knew little else about the family heirloom. Rob's curiosity was piqued and he reached out to our Guild to learn more.

On the sultry evening of March 5, 1943, Lieutenant Earle B. Childs stood his watch as duty officer at the PT boat base on Tulagi. Like all PT men, Childs had volunteered for the new force and commanded a boat division. Though the Guadalcanal campaign had officially ended the month before, the Japanese were still able to remind the victors that not all the fighting had ended. On that night, the air raid alarm sounded and LT Childs ordered the boats to get underway. A lone Japanese bomber droned overhead, apparently intent on hitting a floating drydock nearby, but one bomb from its stick made a direct hit on the duty hut containing Childs and his watch section. The detonation destroyed the hut and killed nine men. A badly wounded radioman and Childs survived, though he had had his right leg severed well above the knee. Bleeding profusely, Childs was saved when a rushing medical corpsman stumbled upon him and used the lanyard for Childs' service pistol to tie a tourniquet.



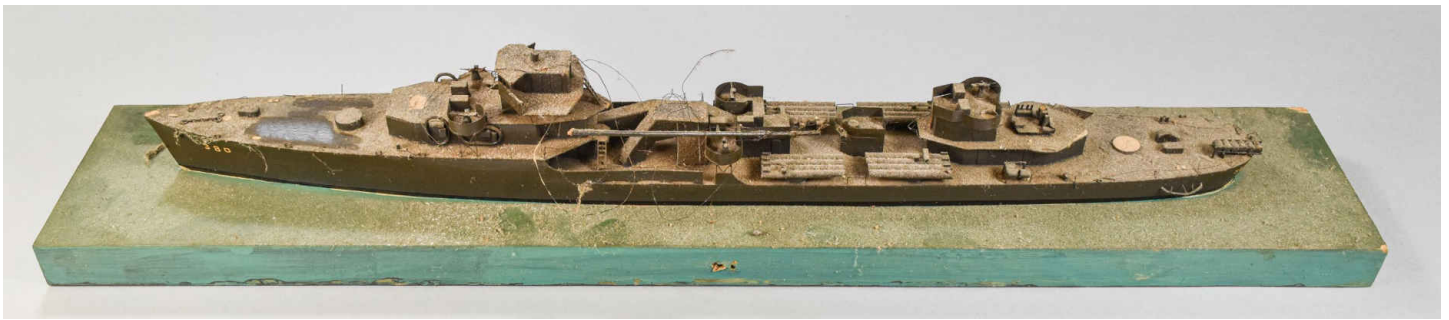
With medical facilities scarce on Tulagi, Childs was taken aboard a small freighter to have his wound sutured. However, the locale was hardly fit for a surgical suite, particularly with all the flies, and infection soon set in. Childs and the wounded radioman were brought across Ironbottom Sound to Guadalcanal for air evacuation, but they had to wait in the bed of a truck overnight. The radioman died next to Childs in the truck. Childs was flown to the hospital at

Efate, New Hebrides, and endured a surgical amputation at the hip to remove the gangrene that had developed. This occurred on March 7th, the 25th anniversary of his father's death as an observer aboard a British submarine in World War I, just three weeks before Childs was born. A month later, Childs was being evacuated on a hospital ship to New Zealand when further bleeding indicated the infection had spread.

A Modeler's Tale (continued)

Immediate surgery in the bunkroom without an anesthetic saved his life. Eventually, Childs convalesced at the Naval Hospital in Balboa Park for the rest of the war, having his weight at one point dropping to just 85 pounds.

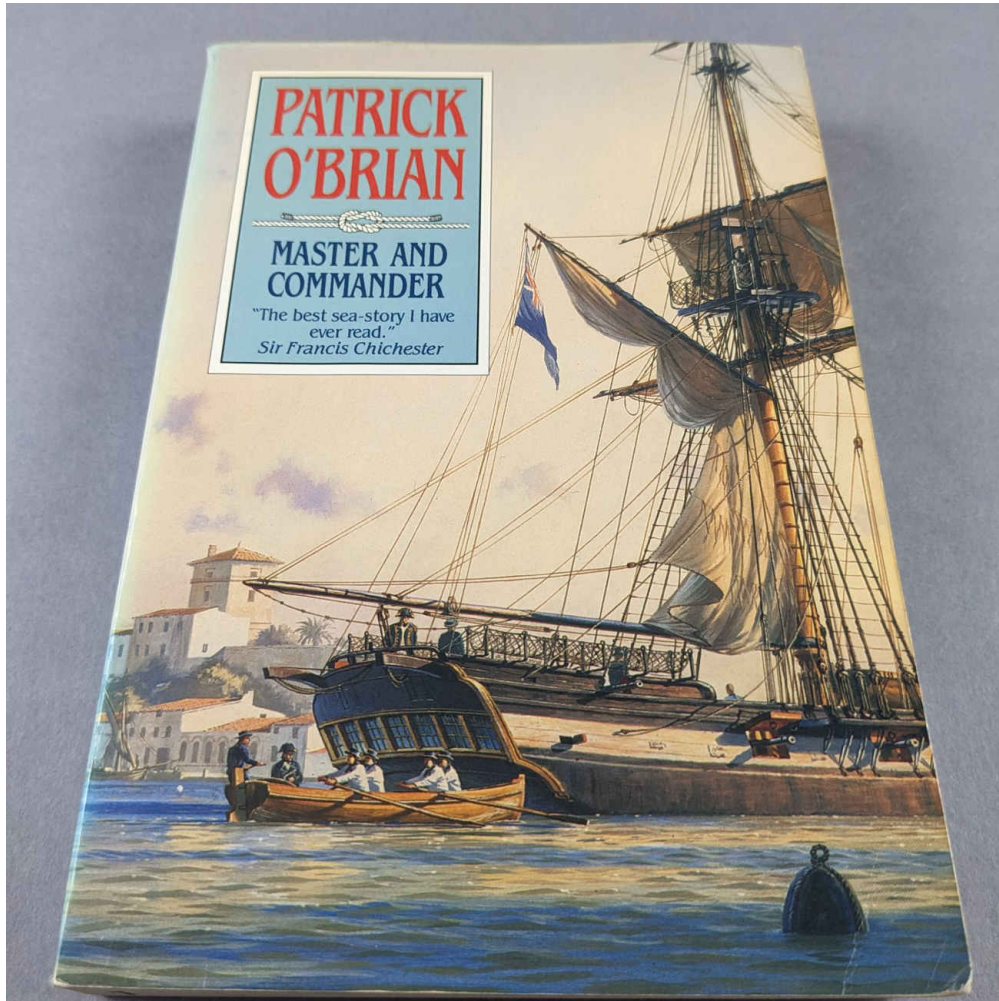
Childs settled in Coronado and worked at NASSCO across the Bay. Possessing a passion for boats as well as ship models, Childs joined the Coronado Yacht Club and became a regatta commodore. He designed and hand crafted his own sail boats, including ketches and sloops, which he personally tested in the waters of Glorietta Bay. The *Gridley* model for the Motes family was another slipway job for him! The model is scaled to 20 feet to the inch, and was fabricated from solid wood for the hull, superstructure, and gun houses. Superstructure decking and other fittings were made from oaktag, the material manila folders are made from. Fine steel wire produced life rails and rigging. The model was then set on a simulated water base making bare steerageway.



Over the decades the model had acquired a substantial patina of dirt and the top hamper had suffered badly from several family moves. Cleaning required several passes from moist Q-tip swabs, and the deteriorating and delaminating oaktag received conservator's B-72, a formulation of a paraloid acrylic dissolved in acetone. Some of the weaponry needed to be replaced, and Rob installed new rigging. As shown, the model and its base is now mounted on an additional pedestal that can take a new case. The Motes family is delighted with the restoration and will treasure the model for generations to come. Unfortunately, Earle B. Childs died in 1966 and is interred at Fort Rosecrans. If any of his other models turn up, they should be celebrated for the caring works of a talented hero.



Looks At Books



Talented author Patrick O'Brien impressed Alex Roel as not only a gifted storyteller, but as an accessible expert on nautical terminology.

The Cool Tool of the Month



Pursor Jon brought in the “Thingee,” a versatile hand implement that can perform endless functions, like adhesive application, glue spout opener, a fid for undoing tiny knots, making small pilot holes, a press for small nails, a stabbing implement for touchy-touchy others, teeny fitting separator, old glue scraper, and Julienne fries applicator.

IN MEMORIUM: Jim Byrnes

By Chuck Seiler

It is with great sadness that I report the passing of Jim Byrnes, Byrnes Model Machines. Jim was diagnosed with ALS last February, and passed away in early October. He was 64.



We seldom recognize the passing of people outside our Guild, but I do so in this case because Jim was a major influence in our hobby. As a ship modeler and machinist, he was not happy with the quality of machine tools available to the ship modeler. He developed quality items and made them available to others. He and his then girlfriend, Donna, formed Model Machines in 2002. His product have since become, in many people's opinion, the gold standard. He will be missed.

His wife and business partner, Donna, indicated, "we are uncertain about the future of Byrnes Model Machines - but we're working on it, and hope to have an announcement in the next few weeks."

Farewell Jim

Guild Log Keeper, Isaac, stands ready to heed the call of another monthly meeting.



“Could you tell me if this is indeed comes from a ring-tailed lemur?”



“So then I asked Guy to come up and pull my finger!”

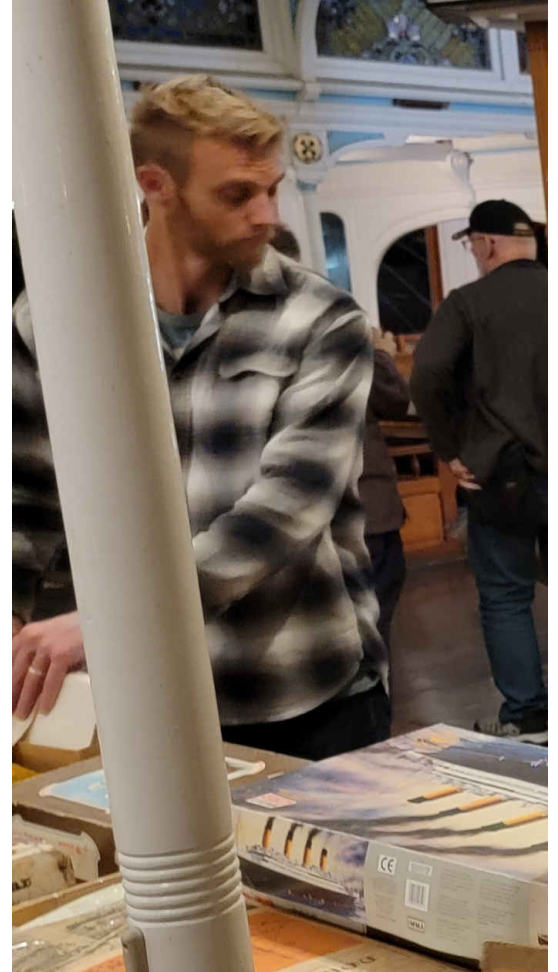
“Oh, look! Someone set the ring-tailed lemur loose!”





“Check it out! It comes with its own terrarium, too!”

“Hey, is that a ring-tailed lemur?”



“I could have been Senator Corleone, Governor Corleone—there wasn’t enough time! I coulda been a contenduh!”



Happy Holidays, Everyone!

This Month's Puzzle

1	2	3	4			5	6	7		8		
9					10		11		12			
		13		14		15		16			17	18
19	20			21					22			
23			24					25				
26					27		28			29		
	30			31					32			
33			34						35			
		36			37				38			39
40	41			42					43			44
45				46			47			48		
49		50	51				52		53		54	
		55										

Across

1. Mythical automaton
5. Onomonopoeia
8. Xenon
9. Sacked
11. Johnson of *Laugh In!*
13. *Fleece* priestess
16. Prefix for "upright"
19. African antelope
21. Wife of Zeus
22. Asian research assn.
23. Phineas tormentor
25. Fleece defender
26. "Bully!" pres.
27. Nautical line
29. Feed staple
30. Jason's objective
33. Two in Pompei
34. Concept
35. Luxury car brand
36. Big eggs
37. Bates siblings' farm
38. Ovid
40. Tough spot
43. Zeus girl
44. Athletics mag.
45. Every ground classification
46. Golden Fleece seeker
49. Makes men party animals
52. Seafaring danger
55. Stop motion master

Down

1. Instructed
2. Chopper
3. Primate
4. Salutory poem
6. useful suffix
7. In favor
8. Rutting hart goal
10. Zuider ____
12. Mythical siege
14. Credit Suisse bond
15. Jason's band
17. Classical strongman
18. Speak to crowds
20. Italian model
24. Owner of Fleece
25. Successor to Hades
27. "Reena" yell?
28. WWII frigate
31. Destroyer hull desig.
32. Big fair
33. Western Greek kingdom
36. Preposition
39. Early Greek god type
41. "on the internet"
42. Eurasian studies pub.
43. South American empire
47. Workplace wellbeing act
48. Lou Gehrig synd.
50. Blood group factor
51. Heavy cruiser hull desig.
53. Jewish college
54. French article

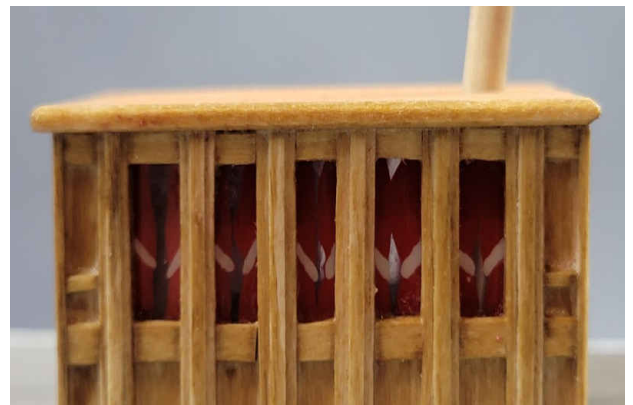
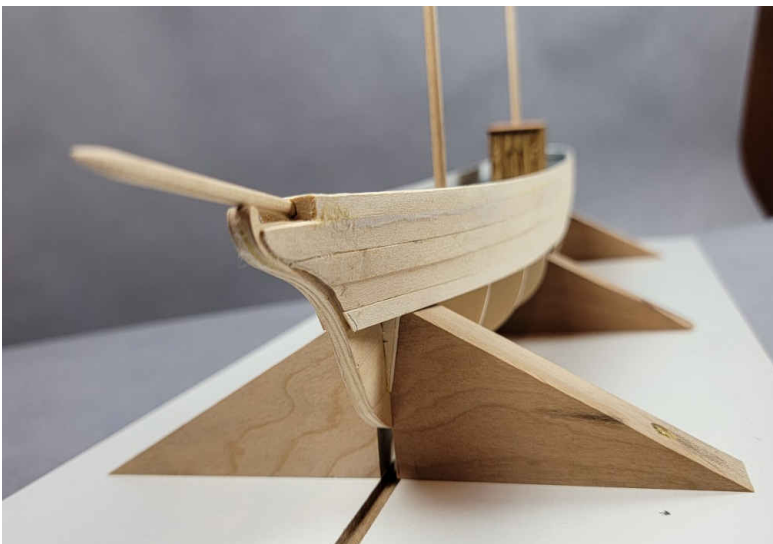
Last Month's Puzzle

D E C A T U R E O A L P
E C O N I A G A R A J A
T O N S E J X G M O K P
W A S P E S U L N V A R
J U T I E S I E X U S E
U N I T E D S T A T E S
S T T H Y R R E P U L I
E B U B R O K E X O L D
S L T D L A K E E R I E
N A I N O D E C A M O N
E H O R N E T D A N T T

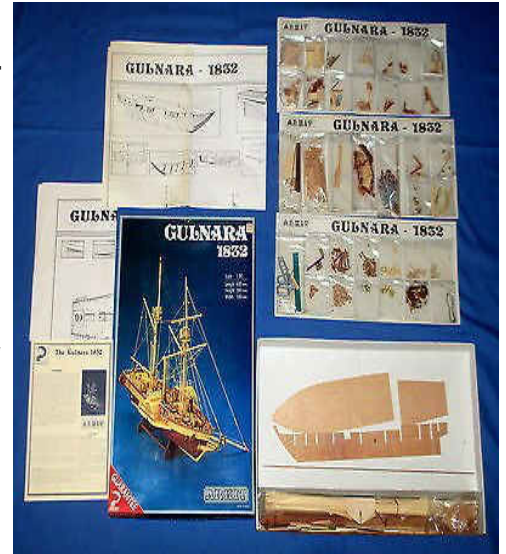
Argus Niagara Decatur Constitution Wasp Essex Jones
 President United States Eagle Perry Broke Lake Erie
 Macedonian Elliott Nautilus Hornet

Show & Tell

The latest addition to Tom Hairston's scale depiction of each vessel in the Maritime Museum's collection is the steam yacht *Medea*. This work-in-progress is mounted to a build board for ease of construction. Getting the deck color right was tricky, but it looks like he caught it. Tom opted to decorate the deck house cabin with patterned curtains in the windows. Though his project is only two weeks along, it will not be much longer before the Museum has a new addition!

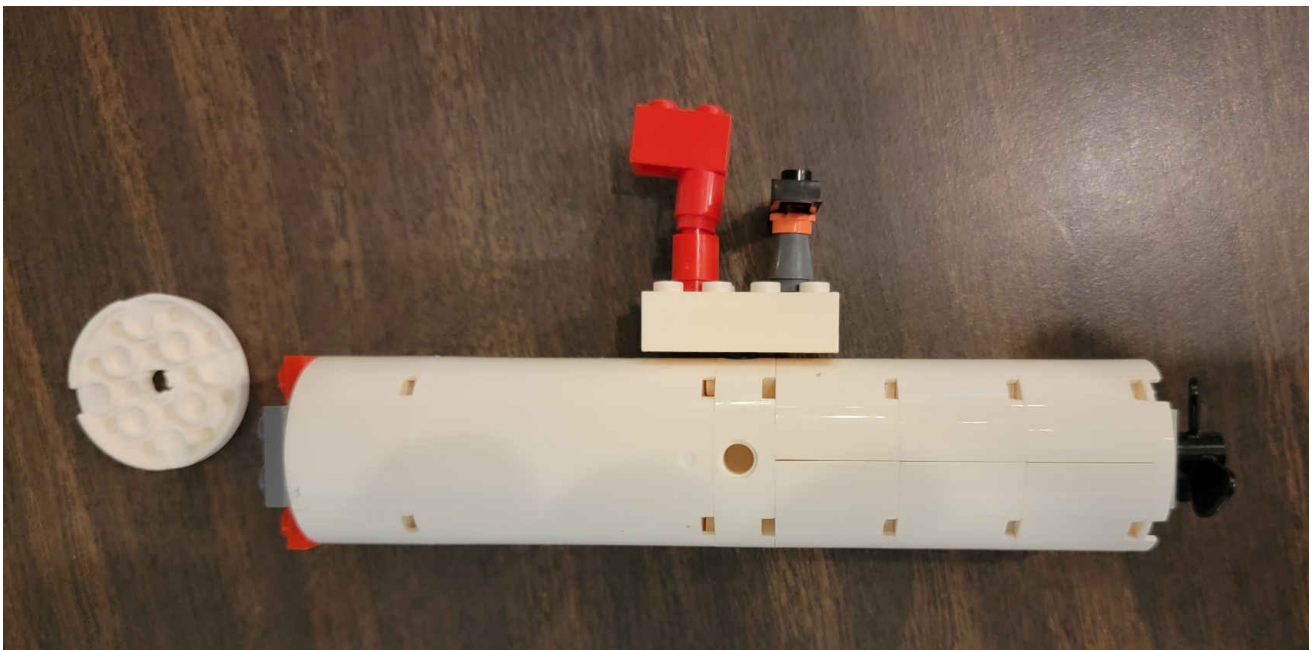


Our remote Guild member from Long Beach, Mike Hite, sent us some pictures of his latest creation, an Arkit product fabricated in Spain, but marketed in Australia and New Zealand. Mike estimates the kit dates from the 1980s. It depicts the sidewheeler *Gulnara* which was built in Britain for the Sardinian Navy in the 1830s. The kit is in 1:90 scale and is a “no-frills” endeavor with only three large drawings, no instructions, and a series of 8 1/2 x 11 pages for the rigging. Smaller wood forms were simply precut and left in a baggie for the cabins. At this stage, Mike is finishing the rigging, and will turn to the ratlines soon. We urge our other SDSMG members from out of town (or state) to take pictures of their projects as well and we will include them in our “Show & Tell” feature!

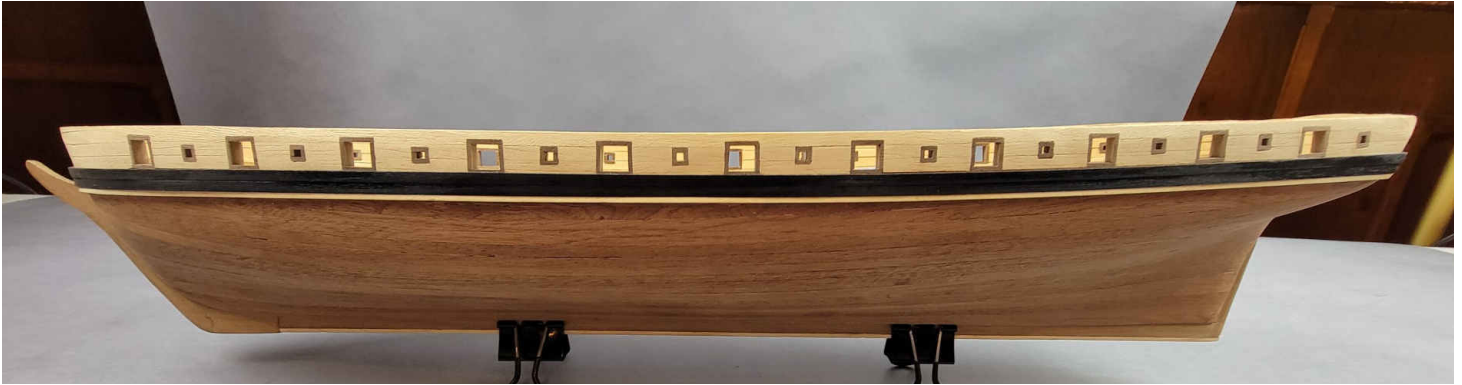




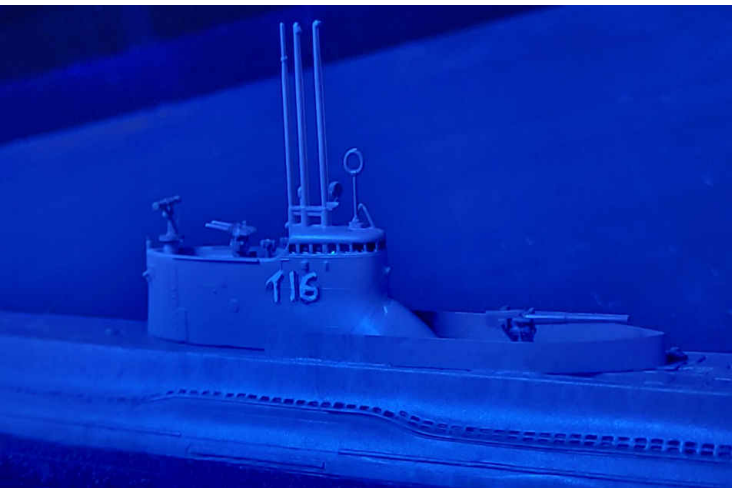
Trystan Lee showed us his vision of a deep sea submersible fashioned from common materials repurposed into a representation of the San Diego Maritime Museum's own *Dolphin*! We look forward to seeing more examples of Trystan's resourceful approach to ship modelling.



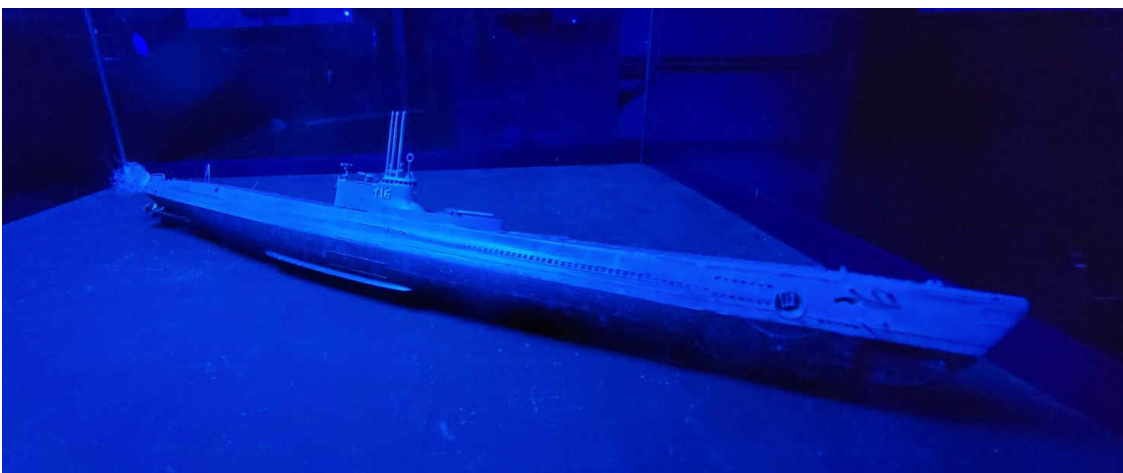
Steve Miller returned to show off the latest progress in his *Prince de Neufchatel* build. He is decidedly pleased with the larboard side of the privateer, models always have another side, and the starboard is giving Steve a fight. The problem seems to stem from the uneven sanding rates that a mixture of hard and softer wood grains present. If not recognized and adjusted for, a noticeable divergence in finish results.



Resident naval dioramist Karl Zingheim presented an experiment in manipulated ambiance. A year and half ago, he purchased several cuts of tinted plexiglass for use in depicting scenes that took place at night. Unfortunately, the shade of blue he selected certainly conveyed a nighttime ambiance when lit from the inside, but the strong blue plex cancelled any red or orange light sources because they were from the opposite end of the color spectrum! Undeterred, Karl sought to find some other use for these sheets, and produced this experimental underwater scene. The model is a 1:200 Nichimo Japanese submarine from World War II with a single general light source inside the blue box. Paint



colors on the model were blended to take into account the lighting and the tint of the plex surfaces. Note how the red lower hull of the model is rendered a dark gray by the blue shift in the plexiglass. Hopefully, more experimentation will yield other interesting effects!





Mission Statement

The Guild is dedicated to the preservation and enhancement of the craft of building scale ship models and to providing a forum for the exchange of ideas, information, skills, and techniques.



Maritime Museum of San Diego

The Guild **strongly** encourages all Members to join and maintain an annual membership in the [Maritime Museum of San Diego](#). As our sponsor, the MMSD provides the Guild space aboard the BERKELEY to hold monthly meetings; allows us to work in, store supplies, and maintain the Museum Model Shop; and annually awards Guild entrants ribbons and cash prizes at the San Diego County Fair.

Museum Model Shop

All Guild Members are welcome and encouraged to regularly work in the [Museum Model Shop](#) aboard the BERKELEY. Besides having five dedicated work stations, it is also the home to the Guild's model shipcrafting library and a vast repository of free building supplies. By volunteering time in the Shop our Members' presence benefits the MMSD by affording their patrons the opportunity to see our craft up close on a daily basis.

Piracy in Model Shipcrafting

Although there is no single, agreed-upon definition of what constitutes "piracy", the use of another's intellectual or physical property without recompense is the basis for any working definition. Unfortunately, this is an issue that affects our craft: be scrupulous and avoid purchasing pirated kits or materials. See our [Piracy](#) page for detailed information.



Our Founders

The Guild was founded in 1971 by Bob Wright and Russ Merrill in conjunction with the Maritime Museum of San Diego's Ken Reynard, Captain of the STAR OF INDIA.

Photo Credits

Guy Lawrie for meetings pictures and the birthday cruise, Isaac Wills for the John Walsh portrait, Mike Hite for the sidewheeler build.