



November 2023

NEWSLETTER

VOL. 51, NO. XI

GUILD OFFICERS

Guild Master

[John Walsh](#)

First Mate

[Tom Hairston](#)

Purser

[Jon Sanford](#)

Newsletter Editor

[Karl Zingheim](#)

Log Keeper

[Isaac Wills](#)

COMMITTEE CHAIRS

Web Master

[Alex Roel](#)

Presentations

[Karl Zingheim](#)

Model Shop

[Jon Sanford](#)

Photographer

[Chris Sullivan](#)

Happy Thanksgiving, SDSMG!



October’s session featured members **Paco Arenosa, Bob Costa, Don Dressel, Tom Hairston, Guy Lawrie, Mike Lonnecker, Steve Miller, Alex Roel, Jon Sanford, Steve Scheet** and his brother **Scott, Chuck Seiler, Chris Sullivan, John Walsh, Isaac Wills, Dave Yotter, Doug Yumoto,** and Powder Monkey **Karl Zingheim** in attendance.

Guild Master John started the meeting with an inspirational paen for our best feature as a Guild: camaraderie. From novice to master, we are practitioners of ship crafting in various mediums, as this issue’s “Show & Tell” feature illustrates! Jon took an opportunity to promote the individual benefits of being a member of Nautical Research Guild, whose website is “www.thenrg.com.”

After thanking Chuck and Alex for last month’s excellent show on the Guild’s history via past issues of the *Newsletter*, John put out a call for more presentation ideas. A request for more model restoration hands was made, and this prompted the novel idea of an “adopt-a-model” program to take in a model for repair and ultimate resale.



The San Diego Ship Modelers Guild is affiliated with and supports the
Maritime Museum of San Diego
1492 N. Harbor Drive, San Diego, CA 92101



From the Quarterdeck by the Guild Master

A slightly shorter than usual report this month, since I'm writing this update to you all amidst the busy preparations for Star of India's 160th Anniversary Sail.

By the time you are reading this, the "Iron Lady of the Sea" will have (weather permitting) tasted open water once more before returning safely to her berth here at the Maritime Museum of San Diego. And it will have been my honor to have served aboard as part of her mainmast crew alongside two fellow guild members, Isaac Wills and Zander Fettel. We'll also have another connection aboard: the *Star's* helmsman is John Merrill, son of guild co-founder Russ Merrill.

Our November meeting will take place on the actual 160th anniversary of *Euterpe's* launch, November 14, which is a wonderful bit of happenstance given our guild's genesis aboard the historic vessel. I look forward to celebrating the occasion with you all!

To make the evening all the more special, we have several visitors planning to join us for this particular instance of our monthly gathering. One is another young aspiring builder who picked up a Mini-Star Kit from us at the fair, built it, and is hungry for more. It has been such a joy to have this next generation of ship modelers find their way to us!

You also should have received an email about a change in format for our planned "Materials" presentation. Given the success of our two previous newsletter column submission events ("Cool Tools" and "Looks at Books"), we'll be doing something similar at November's meeting:

Please bring at least one example of a raw ship modeling material that you love to work with or that you have useful knowledge about. (If you want to bring more, that's great!)

This can be literally ANY material that becomes a permanent part of a build or model display: glue, rigging thread, weathering paint, metal blanks, sail fabric, a specific wood species. If you recommend working with it and have useful knowledge to share about it, bring it with you on Tuesday for a special presentation that will serve as a fun "before" version of Show & Tell.

Fair winds and following seas,

John Walsh
Guild Master





Will You Please Adopt Me?

As we know, ship models are embodiments of skill and dedication to our craft, but all too often, many models come to grief and suffer from gravity and the slow ravages of time.

Fortunately, **Jon Sanford** leads our model repair and restoration program, but the influx of models needing corrective care is rapidly outpacing his capacity to restore and return these little ships to the world.

But, by adopting a model for repair or cleaning, you will give these creations a new lease on life. Will you lend your skills to give a model new life? Please, adopt a model for restoration—you'll be glad you did!

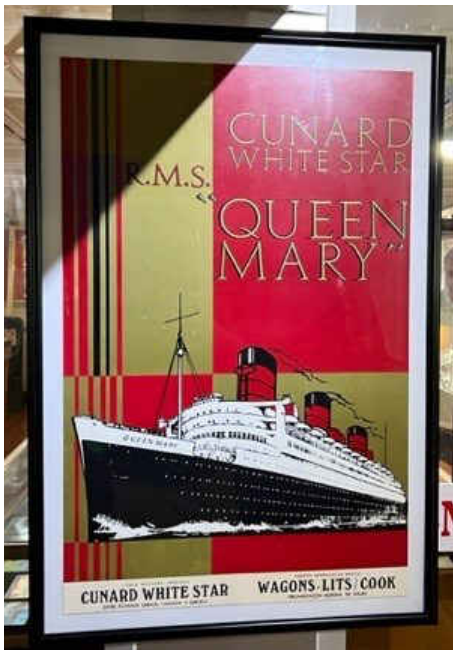
Ask Jon for details!



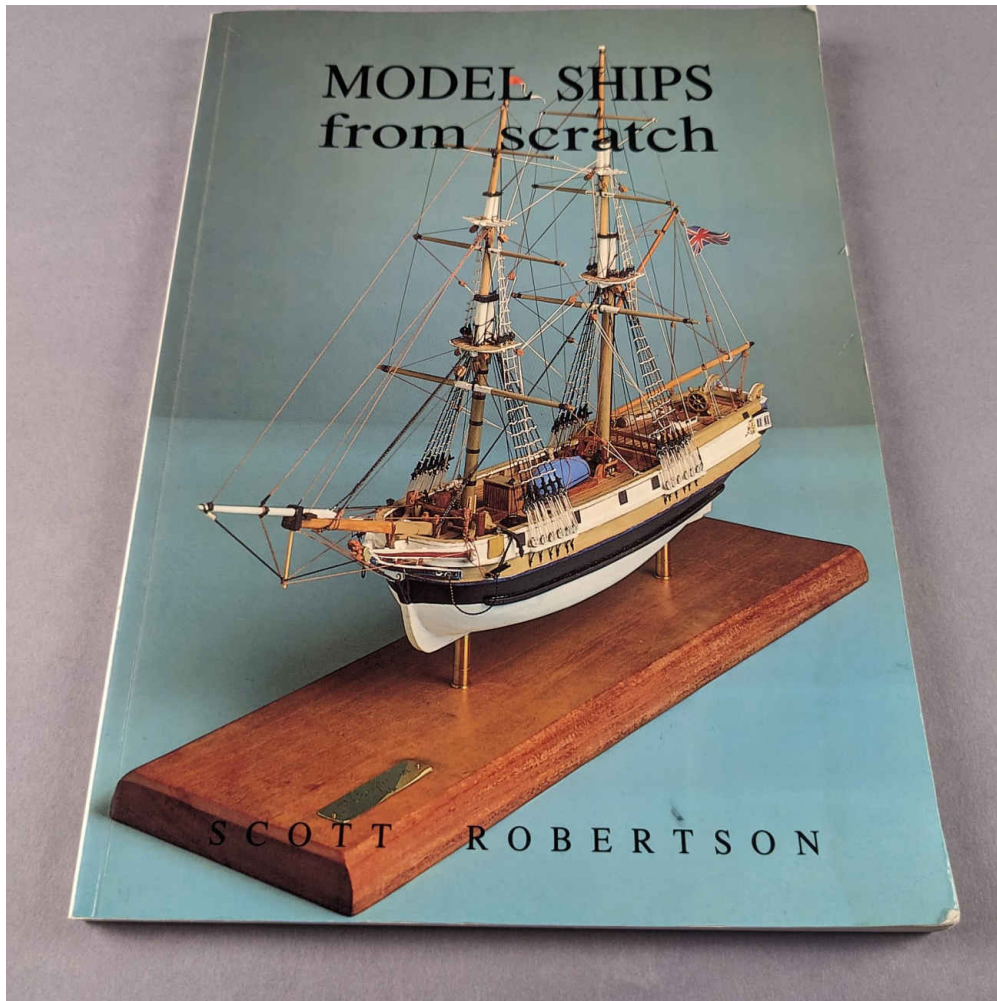
A Visit to the "Steam and Splendor" Exhibit



An advantage in meeting aboard a maritime museum is access to wonderful exhibits featuring the best in ship modeling in a contextualized setting. The Maritime Museum's new exhibit on passenger shipping contains a fascinating collection of liner and cruise ship models and associated displays from across various eras. To see more of these treasures, come aboard and see what awaits below decks!



Looks At Books

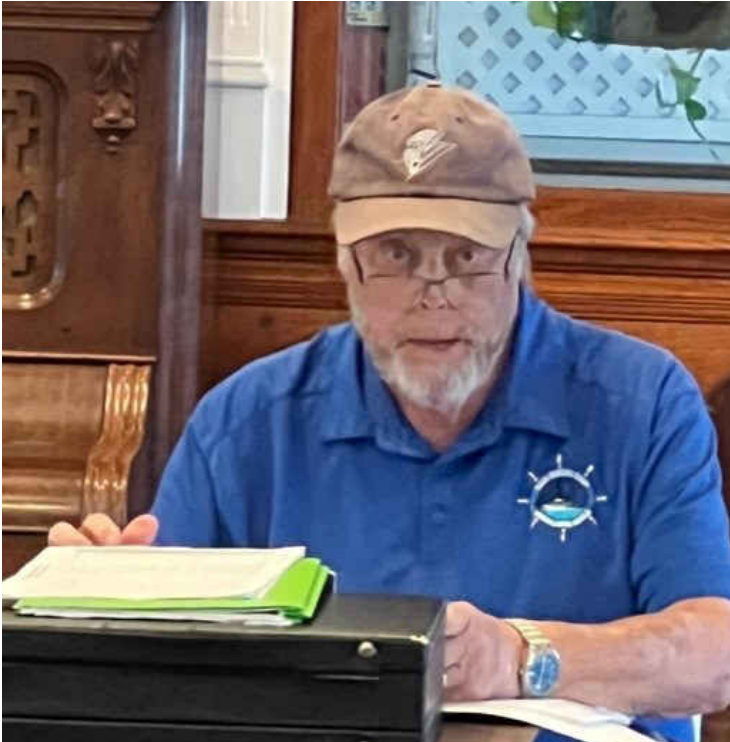


Steve Miller finds inspiration in this work that “energizes the mind” because of the pure scratchbuilt projects included inside. Each model included inside is a unique contribution to model ship crafting.

The Cool Tool of the Month



Alex Roel recommends plastic hobby syringes for the precise application of adhesives and other fluids, like tube paints. The large diameter makes handling more comfortable, and the curved needle can access difficult spots. Being plastic, the conical needle may also be cut for larger delivery. Clean up is a breeze, too!



“Smile when you say that next time!”

“Okie, dokie, then!”



Steve stands four-square for disposable beverage cups!



Guy confidently takes up Tom's "pull-my-finger" challenge.



In the dance-off segment of the meeting, Guy shows off his flamenco technique...

...while Steve demonstrates how to guide a partner in classical ballroom dancing.



Here, Chuck sets up a challenging field goal range for Karl's paper football round, while Mike checks on the alignment.



Alex contemplates what flavor a paper carvel would have if eaten, but Isaac doubts it would be caramel!

This Month's Puzzle

D E C A T U R E O A L P
E C O N I A G A R A J A
T O N S E J X G M O K P
W A S P E S U L N V A R
J U T I E S I E X U S E
U N I T E D S T A T E S
S T T H Y R R E P U L I
E B U B R O K E X O L D
S L T D L A K E E R I E
N A I N O D E C A M O N
E H O R N E T D A N T T

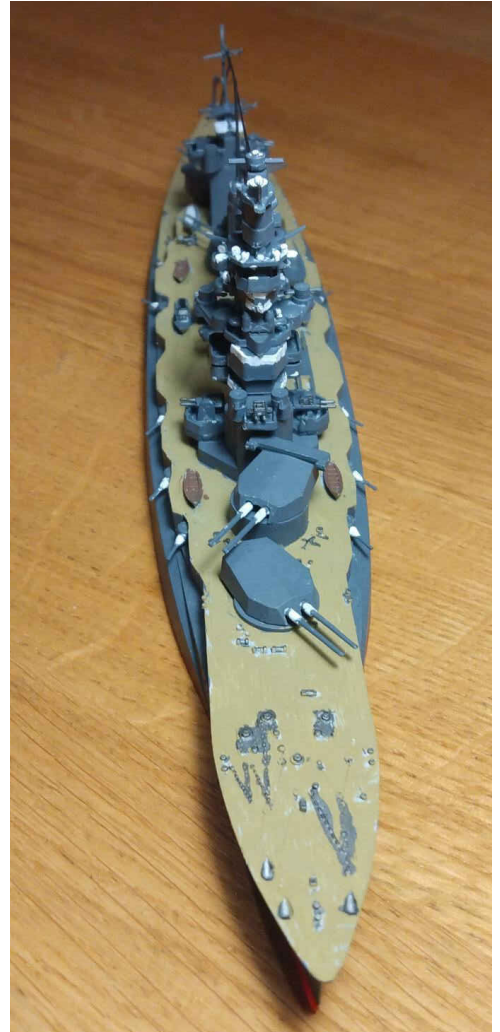
Argus Niagara Decatur Constitution Wasp Essex Jones
 President United States Eagle Perry Broke Lake Erie
 Macedonian Elliott Nautilus Hornet

Last Month's Puzzle



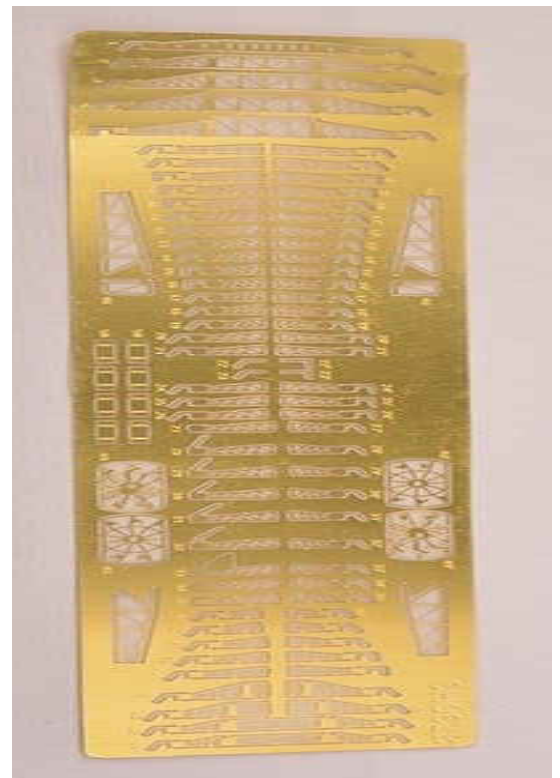
Show & Tell

Coming from Florida is one of our newest, and youngest, members—David Gary—and his build of the Japanese battleship *Fuso*! A new nautical foray for a talented scratch-builder, this build is from a kit Isaac Wills was kind enough to present to David last August. The rigging is from heated and stretched sprue, a challenging technique for most.





Guy Lawrie's selection of a 1:700 scale resin kit of the paddle wheel training carrier *Wolverine* required several additional investments. These included pointy tweezers, and a set of lighted magnifying glasses to help manipulate tiny, delicate parts, such as the photo etch fret seen below.



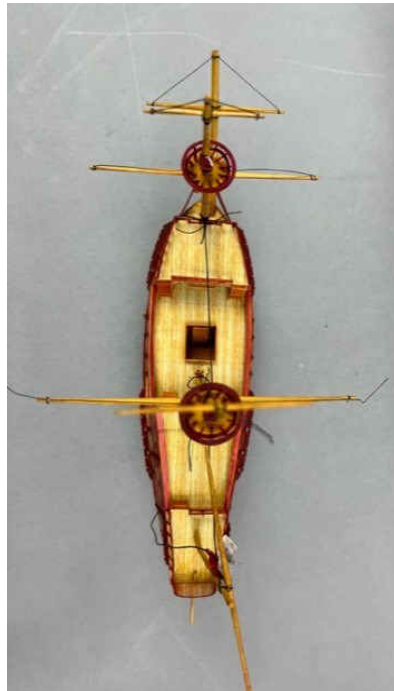
Steve Miller returned with not only the latest progress on his *Prince de Neufchatel* project, but a special device to help mount the model. Since the keel is too small to drill through for a sturdy grip on a pedestal rig, Steve needs to resort to a cradle to decoratively support the hull. To produce a precise fit fore and aft, he will use a profile gauge, the orange and black object in the images. Steve should get several opportunities in the future to use this specialist device!





Hoping to take a break from wood modeling, Alex Roel turned to paper and found a whole new order of challenge! This is the San Diego Maritime Museum's downloadable 1:100 printable model of the *San Salvador*. The planking is colored, which offers a rich pallet range for the model. All the structures are paper, even the masts! One issue with the material is flimsiness: the wales took three layers, the outer framing *seventy!* In tribute to the build, Alex has decided to re-

name his model "*La Tediota!*"



Steve Scheet showed us his newest radio controlled project, the Occre 1:30 steam harbor tug. A straightforward build, Steve hopes to include a smoke rig to improve the realism on the water! Of all-wood construction, waterproofing was attained with epoxy. As a hard-working tug boat, this model has also presented Steve with a new technique to master—nautical weathering. Here's to seeing his tug chugging in the water, puffing smoke from her stack!





Chuck Seiler presented the latest in his magnificent build of an English shallop. The hull was stained with golden oak, and he applied flat coats to the framing. Everything was moving swimmingly when Chuck turned to installing the cap rail, and then discovered he had it on backwards! After the correction, Chuck added wear guards for oars on the pesky cap rail. A perfectionist, he thinks the stern bits are in need of a redo. The portable mast was finished with Tongue Oil, a Danish varnish product.



This diorama from Karl Zingheim depicts the torpedoing of the battlecruiser HMS *Repulse* by Japanese aircraft off Malaya on 10 December 1941. The model is the Trumpeter 1:350 kit, mounted on gatorboard on a Celluclay simulated water base. Wake effects and torpedo tracks were achieved with acrylic tube paints. The water columns from erupting torpedo hits are Halloween decorative spider webbing mounted around wooden armatures, with additional spray simulated by polyfibre around the bases.





Mission Statement

The Guild is dedicated to the preservation and enhancement of the craft of building scale ship models and to providing a forum for the exchange of ideas, information, skills, and techniques.



Maritime Museum of San Diego

The Guild **strongly** encourages all Members to join and maintain an annual membership in the [Maritime Museum of San Diego](#). As our sponsor, the MMSD provides the Guild space aboard the BERKELEY to hold monthly meetings; allows us to work in, store supplies, and maintain the Museum Model Shop; and annually awards Guild entrants ribbons and cash prizes at the San Diego County Fair.

Museum Model Shop

All Guild Members are welcome and encouraged to regularly work in the [Museum Model Shop](#) aboard the BERKELEY. Besides having five dedicated work stations, it is also the home to the Guild's model shipcrafting library and a vast repository of free building supplies. By volunteering time in the Shop our Members' presence benefits the MMSD by affording their patrons the opportunity to see our craft up close on a daily basis.

Piracy in Model Shipcrafting

Although there is no single, agreed-upon definition of what constitutes "piracy", the use of another's intellectual or physical property without recompense is the basis for any working definition. Unfortunately, this is an issue that affects our craft: be scrupulous and avoid purchasing pirated kits or materials. See our [Piracy](#) page for detailed information.



Our Founders

The Guild was founded in 1971 by Bob Wright and Russ Merrill in conjunction with the Maritime Museum of San Diego's Ken Reynard, Captain of the STAR OF INDIA.