



May 2022 NEWSLETTER VOLUME 50, NO. V

GUILD OFFICERS

Guild Master

[Guy Lawrie](#)
guildmaster@
sdshipmodelersguild.org

First Mate

[Tom Hairston](#)
firstmate@
sdshipmodelersguild.org

Purser

[Jon Sanford](#)
purser@
sdshipmodelersguild.org

Newsletter Editor

[Karl Zingheim](#)
newsletter@
sdshipmodelersguild.org

Log Keeper

[Doug Yumoto](#)
logkeeper@
sdshipmodelersguild.org

COMMITTEE CHAIRS

Web Master

[Alex Roel](#)
webmaster@
sdshipmodelersguild.org

Presentations

[Karl Zingheim](#)
presentations@
sdshipmodelersguild.org

Model Shop

[Jon Sanford](#)
modelshop@
sdshipmodelersguild.org

Fair Thee Well, SDSMG!



The San Diego County Fair is returning, **June 8th to July 4th**, and the Guild is cordially invited to participate in the “Designs in Wood” Pavilion. Set up of the SDSMG booth is on **Sunday, May 15th**, with delivery of furnishings starting at 10

am. Construction of fair booths will proceed the next two days. Models entered for the competition will be permitted to arrive on **Tuesday, May 24th**, starting at noon. Judging of the entries will be over the next two days. A dinner for participants will be held on **Saturday, May 28th** at 6 pm. An Open House will follow after the meal. Professional photography of the entries will occur on **May 31st**. Awards for the worthy victors will be held **Monday, June 6th** at 7 pm. The exhibition area will be dismantled **July 5th to 7th**. Let’s show our friends and neighbors what craftsmanship *really* looks like!

“From the Quarterdeck” by the Guild Master

Greetings Guild! May days are here, and the San Diego County Fair season is short weeks ahead. Consider helping staff the Maritime Museum’s and Guild’s booth in the Design in Wood Pavilion, even if just for a day or two. This is a wonderful opportunity to demonstrate whatever level of skill one might have in our craft. Don’t be shy—certainly mine is not of any high level!

The Guild’s April meeting provided an opportunity to utilize our enhanced photography backdrop and lighting to produce higher quality pictures of models. Unfortunately, there was only a single model



The San Diego Ship Modelers Guild is affiliated with and supports the Maritime Museum of San Diego
1492 N. Harbor Drive, San Diego, CA 92101



“From the Quarterdeck” by the Guild Master continued:

brought to the Show & Tell, *and it was one of Karl’s*, darn it! Come to the May 10th session and participate, please. Bring one of your projects!

The April meeting also included a presentation video found online of the “Wreck of the Schooner *Wyoming*, The Largest Wooden Ship in History.” May’s meeting presentation will be “Deck Planking—a Tutorial.” Bring your expertise to the meeting and chime in! Until then,

Be well in calm seas with a fair wind,

Guy Lawrie

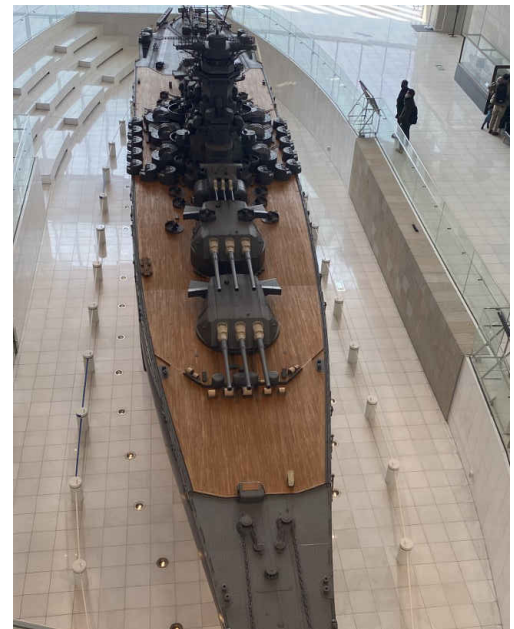
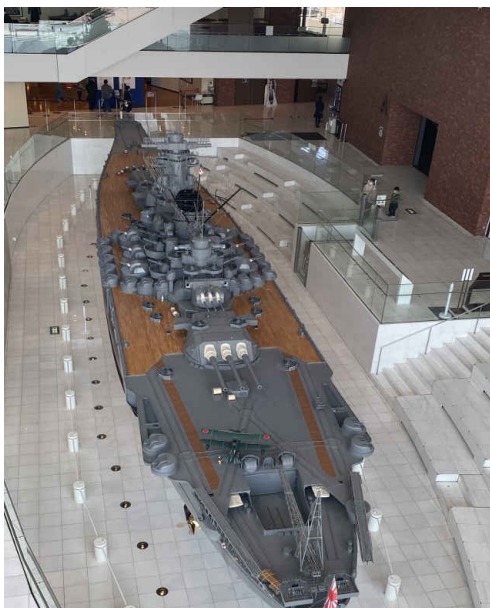
Sullivan’s Travels

Our own **Chris Sullivan** took time out from his naval duties during a recent assignment in Japan last March to visit the Kure Maritime Museum, popularly known as the “Yamato



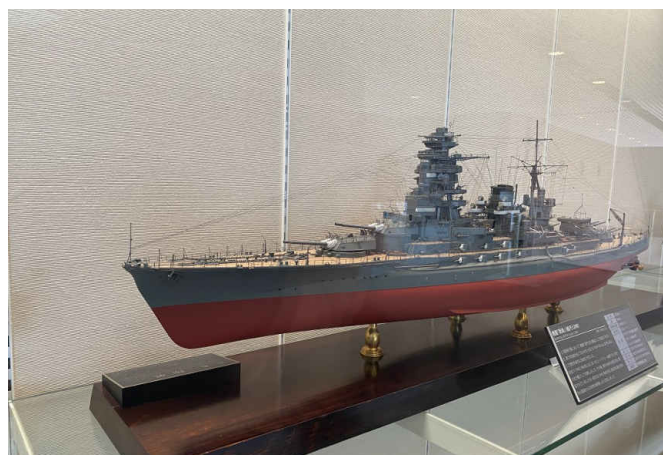
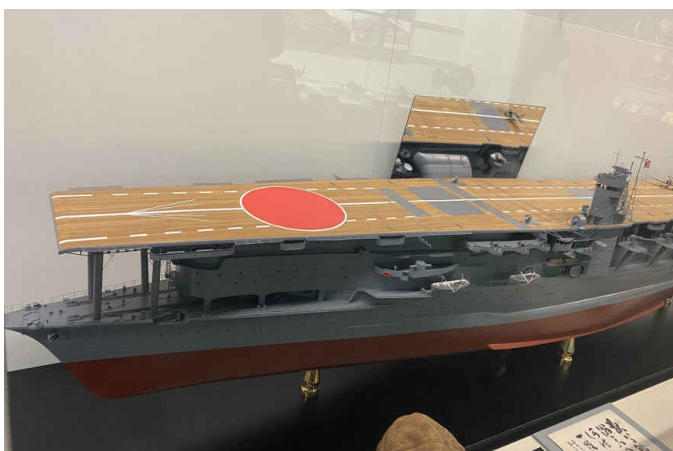
Museum,” on the Inland Sea in western Japan. The decommissioned submarine *Akishio* display is but a taste of what awaits visitors inside. In addition to exhibits on Kure’s maritime heritage, the museum is famed for its significant collection of actual and replica artifacts of the Imperial Japanese Navy, or *kaigun*. A memorable feature is a 1:10 scale model of the super battleship

Yamato, a centerpiece since the museum’s opening in 2005.





From the perspective the Guild, the Kure Maritime Museum is a veritable treasure trove of models celebrating Japan's maritime heritage, from industrial models to display features, and dioramas. We look forward to seeing more of what Chris was able to record and experience in a potential features presentation in the not-so-distant future in one of our later sessions!



Who Wants to Present at our Meetings??!!

Have a model-crafting tip or technique you want to demonstrate? Did you come across a new material or device that can transform your fellows' building style? Is there a research source or service you can recommend to everyone else? What's the hottest new kit release? Were you recently at an awesome museum or exhibition? Are you experimenting with anything that will not result in a police raid?

Then, step up and represent! See Master Guy or Editor Karl for details!

April 12th Meeting Notes

Guild Master **Guy Lawrie** commenced the meeting with **Art Arroyo, Don Bienvenue, Tom Hairston, Jay McMaster, James Pitt, Doug Yumoto, and Karl Zingheim** in attendance, seated around a single table. With the County Fair looming, a wide-ranging discussion ensued about the need to staff the event on behalf of the Guild. James touted the advantages of working the weekend shift at the Pavilion as there is lighter road traffic during the commute, and he found the parking was easier. Art expressed his desire to enter his recent project, a radio-controlled tuna boat, the *Suzanna II*. A desirable feature of the Fair exhibition is the provision of locked cabinets for all the model entries.

An earlier proposal from **Mike Lonnecker** for a community build was discussed to



produce a paper model of the *Three Brothers*. Guy announced his intention to have a presentation feature for each monthly session, and for the second half of the meeting, we tested the viability of our recently-acquired video projector and laptop combination. The topic was a brief review of the career of the merchant schooner *Wyoming*, the largest wooden vessel ever constructed. The

presentation worked sufficiently as a proof-of-concept, and we look forward to more topics. Since the Guild is affiliated with the Nautical Research Guild, we may have access to their wealth of subject matter.



Guy also called attention to the arrangement of new lighting to complement the photo backdrop he obtained, permitting even better model photography, though the skills of an experienced photographer would be much appreciated.

Show and Tell Model

Karl Zingheim's USS *Gleaves*

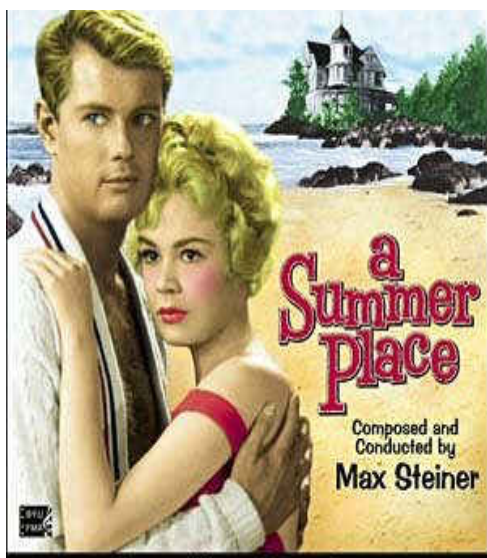


The sole Show and Tell entry at the meeting was a 1:144 scratch-built model of the USS *Gleaves*. The latest in his series of gross scale U.S. destroyers from World War II, the incomplete model is nevertheless in an advanced state of construction, and will be depicted, as always, on a custom diorama base. The *Gleaves* was the lead ship in a large class of destroyers built

alongside the larger Fletcher class before and during the war. Unlike the Fletchers, the *Gleaves* class and the similar Benson/Livermore types saw action in all the theaters in World War II, as well as postwar service as minesweepers and as transfers to allied navies.



Is a Seasonal Home for the SDSMG in the Offing?

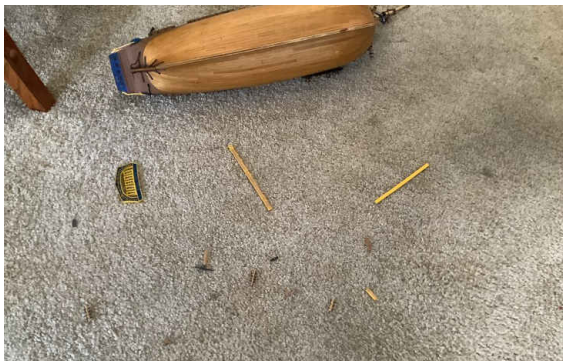


Will the strains of Percy Faith be heard over the summer months amongst Guild members? Summertime is always a challenge to attend our monthly sessions at the San Diego Maritime Museum due to its popularity with the touring public, and the resulting shortage of parking spaces nearby. There is speculation that a potential seasonal arrangement may be made with an alternate venue during this peak tourism time to permit the Maritime Museum's guests to enjoy the *Berkeley* unhindered by our sessions, and allow the SDSMG to access parking and to convene in a less conflicted setting. Meetings aboard the *Berkeley* would naturally resume after the summer season has passed. Stay tuned for more developments on this breaking story.

Rocks and Shoals!!!

In this issue, we introduce a recurring feature, “Rocks and Shoals,” which will showcase submissions from intrepid Guild members who have had a common mishap or two in our challenging avocation. While we are all proud of our labors, all too often, real life asserts itself and random misfortune can visit our treasured projects.

In this instance, **Don Bienvenue** learned that his HMS *Bounty* build was not a fugitive to Sir Isaac Newton’s laws, and his marvelous model careened onto a (fortunately) carpeted floor below the work bench, shivering timbers, wrenching the transom, and sending deck



furniture flying off to only the cat knows where. However, if there is a virtue a ship model builder possesses, that’s tenacity, and Don was able in good time to restore his *Bounty* to her former state. Thank you Don, for sharing this reassuring tale with a happy ending!

If you have experienced a mishap or setback with your project, don’t get mad—get the camera! We can all share in your recovery: you are not alone. Please send in your “aaargh!!!” and “aaahhh...” moments.

