



March 2022 NEWSLETTER VOLUME 50, NO. III

GUILD OFFICERS

Guild Master

[Alex Roel](#)
guildmaster@
sdshipmodelersguild.org

First Mate

[Mike Lonnecker](#)
firstmate@
sdshipmodelersguild.org

Purser

[Jon Sanford](#)
purser@
sdshipmodelersguild.org

Newsletter Editor

[Guy Lawrie](#)
newsletter@
sdshipmodelersguild.org

Log Keeper

[Tom Hairston](#)
logkeeper@
sdshipmodelersguild.org

COMMITTEE CHAIRS

Web Master

[Alex Roel](#)
webmaster@
sdshipmodelersguild.org

Presentations

[Karl Zingheim](#)
presentations@
sdshipmodelersguild.org

Model Shop

[Jon Sanford](#)
modelshop@
sdshipmodelersguild.org

March brings Saint Patrick’s Day with an Irish toast to good health. Sláinte mhaith, Guild!



Cast by “The Wild Goose Studio” at Kinsale, Ireland from a design by Irish artist Kathleen Smith, 1965

The picture to the left is of a cast of a Bantry Boat. The plaque accompanying the cast describes the boat as a “curragh” (a “curach” in Irish), a skin covered wooden framed boat. This boat may depict Saint Brendan as he is told about in an Irish immram, a tale from the seventh and eighth centuries. The tale tells of the hero's seafaring adventures when he encountered doomed souls and sea monsters. Some even believe that St. Brendan, the patron saint of sailors and travelers, may have discovered America 1,000 years before Columbus during his

voyages! A visitor to the United States Naval Academy in Annapolis, Maryland might even find a large stained glass window that commemorates Brendan's achievements. Pictured to the right is a model of St. Brendan’s curach and is attributed to “By Michealol - Own work, CC BY-SA 3.0, https://commons.wikimedia.org/w/index.php?curid=8089989”



“From the Quarterdeck” by the Guild Master

As my two-year tenure as Guild Master comes to a close, a few thoughts.

Many thanks to all Members and Officers for keeping the spirit of our Guild alive during the pandemic despite being able to meet in person on only 5 occasions over the past 24 months.

Fortunately, we were able to meet virtually, and even celebrate the Guild’s 50th Anniversary in person during a brief window of good conditions. We also added several new Members to our rolls over the last two years despite all of the challenges. **Continued on next page**



The San Diego Ship Modelers Guild is affiliated with and supports the Maritime Museum of San Diego
1492 N. Harbor Drive, San Diego, CA 92101



“From the Quarterdeck” by the Guild Master continued:

As conditions continue to improve, we now anticipate meeting in person on a regular basis, the resumption of the San Diego County Fair, and all of our Guild’s regular pursuits.

It’s been an honor serving and, as always: fair winds and following seas,

Alex Roel

The Guild extends a hearty “job well done” to Alex!**With that: Attention on Deck!**

Guild Master Alex Roel and Log Keeper Tom Hairston report it is that time to elect Guild Officers. The election will be conducted at the March Guild meeting on March 8, 2022. Please find the 2022 Officer Ballot towards the back of the Newsletter on **page 10**. The ballot is also attached to the newsletter email as a separate Word document to make it easy to cast a ballot by email. **Write-in candidates and floor nominations are encouraged.** Other instructions for voting are included on the ballot.

Please consider serving our Guild!

GUILD MEMBERS ARE REMINDED TO PLAN ON ATTENDING the next Guild Meeting scheduled for 8 MARCH 2022 at 6:00 PM! Look to your email for a message with meeting details. The meeting will most likely be an IN-PERSON MEETING aboard the Maritime Museum of San Diego’s Steam Ferry *Berkeley* or an online virtual meeting if health circumstances demand it.

8 FEBRUARY 2022 GUILD MEETING REPORT

Those unable or hesitant to attend a virtual or an in-person meeting are encouraged to send pictures of project(s), or anything else of interest, that you would like to share with the Guild to the Editor at newsletter@sdshipmodelersguild.org so it may be added to the newsletter.

The Guild’s February meeting was a virtual meeting held in response to the ongoing COVID resurgence and to help safeguard Guild members. Prior to the meeting, **Guild Master Alex Roel** sent the membership an email informing them that the meeting would be virtual and the procedures used to log onto the online meeting. **Alex** called the meeting to order and greeted the Guild’s crew of thirteen (13) ship modelers including **Mike Lonnecker, Jon Sanford, Tom Hairston, Guy Lawrie, Don Dressel, Dave Yotter, Don Bienvenue, Chuck Seiler, Bob McPhail, Frank Dengler, Doug Yumoto, and Doug Ward.** The meeting then moved directly on to officer reports before **Show & Tell.**

Officer Reports: First Mate **Mike Lonnecker** and Log Keeper **Tom Hairston** had nothing new to report.

Purser Report: Purser **Jon Sanford** sent the following banking update:

Beginning Balance on January 13, 2022 \$<redacted>

Ending Balance on February 10, 2022 \$<redacted>

Jon thanks all who have brought their dues up to date. Nine (9) members remain unpaid and it is hoped that becomes resolved soon. **Jon** also noted that (11) members are also members of The Nautical Research Guild (NRG). All members are encouraged to join the NRG and so they might enjoy their fine journal!

Purser Report continued:

Last call for Membership Dues! Dues remain at \$20.00. With COVID restrictions in effect, payment can be mailed to: Jon Sanford, <redacted> or brought to an in-person meeting. Checks can be made payable to “San Diego Ship Modelers Guild”. **If a member has different contact information than that maintained in the “Sea Locker” on the Guild’s website, sdshipmodelersguild.org, please send new contact information to Jon. If there is trouble with the Sea Locker password, please contact a Guild Officer.**

San Diego County Fair Report: Jon Sanford is reporting the following information! **Get your model ready to display at the fair and take part in the model contest!**

Follow these links to the entry materials which are chock full of information. You will find all you will need regarding the exhibition, including significant dates and times as well as the Design in Wood competition classes you may enter your pieces in.

For the entry materials, follow this link: [Design in Wood Brochure](https://tinyurl.com/2p8686cj) <https://tinyurl.com/2p8686cj>

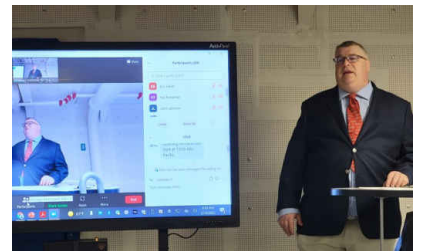
To enter a model, follow this link: sdiego.fairwire.com

For convenience, the 2022 Fair Timeline and the four page Design in Wood brochure mentioned above can be found at the end of the newsletter.

Editor Guy Lawrie reported that after six years of serving as Editor, it is anchors aweigh! I would like to thank the membership for its support putting together a monthly newsletter and for coming forward with your spectacular models and stories. It has been an honor to help out and fun, too! Be well! - Guy

End of Officer Reports**Show and Tell**

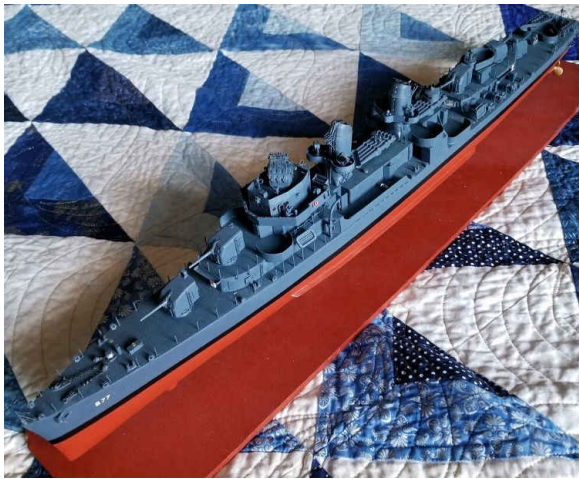
Karl Zingheim told of his work building a 1:72 gun and a 1:35 4”/50 caliber gun for armament on the HMS *Campbeltown* (142) and USS *Ward* (DD-139) though there are no pictures of the work for this newsletter. Of some note, the USS *Midway* Museum located in San Diego and **Karl**, the Museum’s Staff Historian who is pictured to the right, hosted the Western Naval History Association’s **2022 WNHA Symposium**. Given these turbulent times, the talk given by the **Keynote Speaker: The Honorable John F. Lehman, former-Secretary of the Navy** might be found to be most interesting. For more information, visit [Home | Western Naval History Association \(wnha.net\)](https://www.wnha.net).



Howard Griffus offered a look at an exceptional example of model ship building and a story with a YouTube video of “**The Wreck of the Schooner "WYOMING", the Largest Wooden Ship in History**”, <https://youtu.be/bKKkeMeGxmoTop>. **This is a fascinating story and a potential model, too!**



Show & Tell continued:



1/192 USS *McDermut* (DD 677) in progress by Frank Dengler - Frank spoke about having completed *McDermut's* davits, boats, mast, and 40mm & 20mm gun mounts that now just await installation. This is a larger scale model of one of **Frank's** most admired destroyers that he first modeled as a 1:305 model displayed in a shadow box. He has scratch built her hull from wood with other parts constructed from brass, plastic sheet & rod stock, resin & metal castings, aluminum tubing, and paper (canvas railing wind breakers) She will eventually have decal



paper with kill marks on her bridge wings. Of course she will! The picture to the right was first shown in the January 2021 newsletter showing the project underway.



Don Dressel told about his early building projects including his Ramses II chariot model. He sent these two photos of the model not yet completed on the left and the finished model to the right found in his display cabinet.



Don also spoke about his continuing work on **HMS *Roe-Buck***, a project

seen often in recent newsletters. The following is copied from the SMA Newsletter. **Don** reported, “the progress is still slow but things have been completed. The stern is finally completed with the installation of the rudder chains as shown in the photo below. In addition, the double steering wheel has been installed and work is now being done on the final details of the poop decking and furniture. A little research had to be completed to determine the positioning of the rudder chains and the double wheel was completed using the correct scale ships wheels kits provided by www.SYRENSHIPMODELCOMPANY.com along with further information supplied by the book *The Naiad Frigate* by Edward J. Tosti, Volume II.”



Show & Tell continued:

HMS Bounty, also known as HM Armed Vessel Bounty by Don Bienvenue Another pandemic project, **Don** reported in July of 2021 he would undertake a “refresh” of his *Bounty*. A model that he first began work on in 2013. The 1:66 Mamoli kit-based model in 2021 appeared like the picture to



the left with his work rebuilding her from the wale up. The picture to the right shows work on the quarter gallery. **Don** reports that it was very difficult to paint these galleries and have them look decent because they are Britannia metal castings and are kind of rough compared to wood. He said he was building this model straight from the

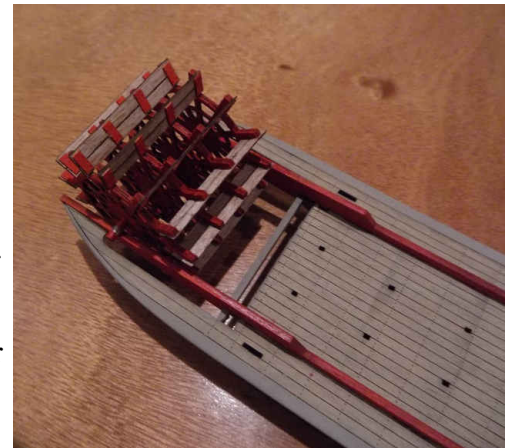
kit so he could try different modeling techniques. Further he said, “When I have to make future galleries, such as for the USS *Constitution*, I think it will be worth the extra time and effort to build the galleries from scratch. As for these galleries for the *Bounty*, I used acetate to simulate the windows, glued with plastic model glue to the casting. The window mullions were made with pinstripping tape.”

**Western River Towboat K. C. Belle by Dave Yotter**

Dave told about his continuing work on a towboat that he first reported on in November of 2021 when his 13.5 inch long project was then as pictured to the left.



At that time, he told that *Belle* would be built as a full hull version mostly because **Dave** reported he does not like the idea of hacking off the bottom of the nicely detailed paddlewheel pictured to the right. The following article is fully copied from the current SMA Newsletter and he confirms that indeed, he is building *Belle* in her full hull version.



“The *K.C. Belle* towboat kit is a freelance small towboat based on common construction methods of vessels used on the western rivers of the United States. This is a prototypical western river small towboat design more typical of towboats used from the 1890’s until the 1930’s. In addition to the transport of materials such as coal, towboats were used with transfer barges to transport rail traffic across rivers and to move “showboats” (theaters built on barges) from town to town.

“Additional information being used for construction of the model is coming from [The Western Rivers STEAMBOAT CYCLOPCEDIUM](#) by Alan Bates and the companion volume [The Western Rivers ENGINEER ROOM CYCLOPCEDIUM](#) also by Alan Bates. These books have a wealth of detail drawings of the many different components used through the years on riverboats.

Continued next page

K.C. Belle by Dave Yotter continued:

As told on the previous page, the article continues with **Dave** saying, “I am continuing work on his towboat kit in 1:87 (HO) scale from Train Troll. The material is mostly laser cut and etched wood and plywood with HO appropriate scale scantlings. This kit is being built as a full hull version, pictured left, and has been completed and painted. The signature paddlewheel is on and painted, completed with the assistance of a glue-up jig to keep all the wheels in alignment. The engine room is as complete as it will be for this small-scale

model and includes the boilers and port and starboard engines. There is not too much detail for these components as they will be viewable only through side windows and doors of the main deck cabin. The framing and side planking is complete for the boiler and engine rooms. The boiler deck framing is prepared with the front stairwell installed and ready to go aboard.

“I have been having trouble arriving at appropriate glue-up techniques. Perhaps the picture to the right shows **Dave** working with glue! Tightbond isn’t working well for these construction methods. If there is a lot of area to cover it starts to dry out too soon to allow the parts to be aligned properly before setting up. What is working for me is to get the parts aligned and clamped and then wick medium CA glue into the joints.”



Alex Roel offered the following link following the group discussion around glue and “what works” during the meeting. [McFeely's Titebond Glue Comparison \(mcfelys.com\)](http://mcfelys.com) provides a helpful guide to specifically Titebond glues but by “clicking” on a picture of a glue on the link’s website, a complete description of the glue and its uses is displayed.

Some Odds & Ends

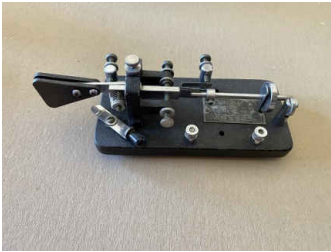
Guild meetings sometimes evolve into discussions on topics and interests outside strictly building ship models. This often leads to getting to know other members and their interests just a bit more. Two examples of this can be found in the middle of this newsletter’s **Show & Tell**. **Come to a meeting!** On our last meeting, virtual no less, members observed the background from where **Doug Yumoto** was calling and found that he is an accomplished radio man. Specifically, **Doug** utilizes telegraph keys to communicate in Morse Code across the globe and he has a post card collection to document all the places he has communicated with. He even quipped that he was 13 years old when he began his interest in radio and

40 years old when he began building models. He told, “the key with the marble base (left) was my first key. I bought it when I was seventeen years old. It's an old fashioned straight key. The key at the right is a semiautomatic key. It is much easier to use than the straight key. Even beginners can learn how to use it quickly. All timings of dots, dashes, and spaces are determined by the electronic circuits while how accurate one can produce codes with straight keys depends solely on the skill of the telegraphist.”

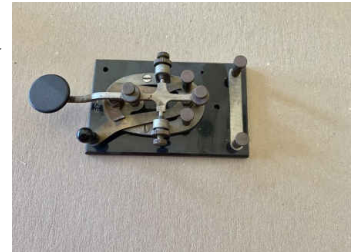


Continued next page

Odds & Ends - Doug Yumoto Telegraph Keys continued:



Continuing to quote **Doug**, “The left picture shows a bug key. It produces dashes only semi-automatically by a pendulum. You can see it as a disk right next to the far-left post. It is widely used by the operators of Wester Union, the armed forces, for maritime communications, and by the railroads. The right picture

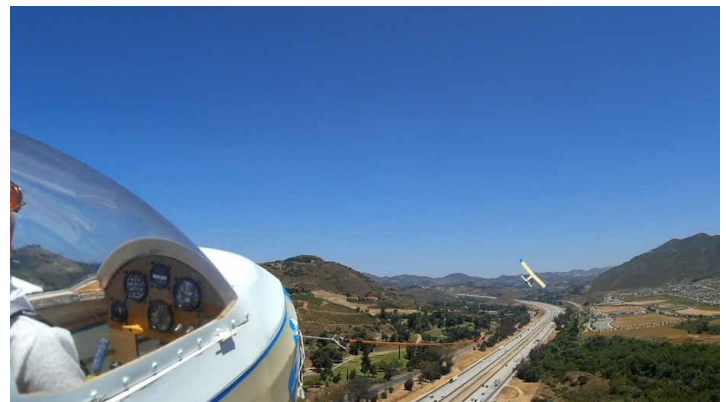


is most ubiquitous key used during WWII and the Korean War. They are so plenty that you can even still find them easily on eBay.” In past years, skill with code was still being tested at the U.S. Naval Academy in Annapolis and members **Bob McPhail** and **Karl Zingheim** commented on the cadet requirement.

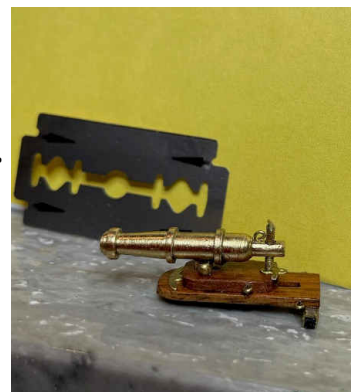
Mike Lonnecker added a discussion about his interest in building and flying gliders. He told he is building a Ka6E glider, pictured to the right, that will have a wing span of 4 meters. Built with high performance materials, wood, and fabric **Mike** expects to fly her one day soon. He said after sending along pictures, “Of more interest might be my last build which is a Cherokee II from the 1950’s, pictured to below left with **Mike**. It has a wingspan of 3.5 meters and is built of spruce, balsa, bass



wood and ply covered with a fabric. The inflight photo below was taken by a GoPro taped to the wing while on aerotow.”



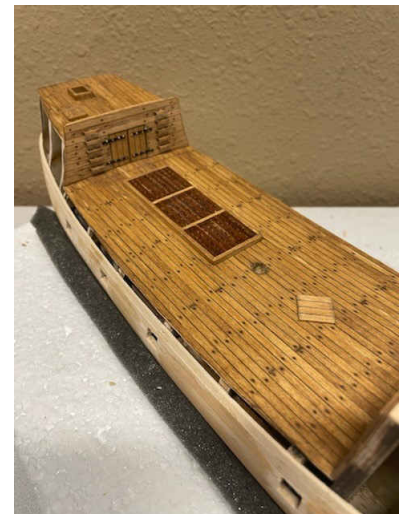
James Pitt was unable to attend the February meeting but sent along the picture to the left of his **Sharpie**. The lashed double booms to the masts are unique to older versions of the working boats. **Jay MacMaster** also was unable to attend the meeting but sent along the picture to the right of one o his (26) carronades, all constructed in his shop using brass bolts as the foundation. Now, all he needs is a quarterdeck!



Show & Tell continued:



Mayflower (1620) by Doug Ward Doug told the members that after his wife became a member of **The Mayflower Society** he began building the Model Shipways 5/32 scale (1:76) *Mayflower* pictured here. He reported that he is just finishing up the deck and bulkhead planking. With his hope of “getting some young blood interested in the hobby”, he sent along a couple of shots of his 6 year old grandson framing and sanding the hull. Well done, **Don!**



Somehow, pictures from **Bob McPhail's Charles W. Morgan** whaleship and various projects by **Jon Sanford** are not available for this issue of the newsletter but they are more than likely to be seen soon. So, the last **Show & Tell** contribution for this newsletter will be **Tom Hairston** who reported the completion of his scratch built model of the Maritime Museum of San Diego's tall ship **Californian**. **Tom** used ship plans from Dr. William Brown's legacy to guide his build along with taking many pictures at Californian's Maritime Museum berth to help visualize the ship's details. The picture to the left shows *Californian* in her case with his scratch build of the museum's *Start of India* behind her. **Tom** is building quite the collection of the museum's ships and it will be interesting to see what he takes on next. Enjoy the pictures of *California* on the following page.

Pictures of *Californian* by Tom Hairston continued:



The End of Show & Tell

For a parting series of pictures, **CW04 Chris Sullivan, U.S. Navy**, sent along a few pictures from his deployment in the Pacific. The Guild looks forward to his, along with his crewmates, safe return home.



San Diego Ship Modelers Guild 2022 Officer Elections Ballot

The Ballot includes space for write-in candidates and you may vote by mail, email, telephone, or in person at the March meeting being held on the Maritime Museum’s Steam Ferry, *Berkeley*. Voting will be tabulated by Log Keeper Tom Hairston. Mail ballots to <redacted>, or email to tomwhairston@gmail.com, or telephone <redacted>. Mailed, emailed, or telephoned ballots must be received by March 8th to be valid.

Officer Position	Nominations	Yes
Guild Master	Guy Lawrie	
First Mate	Tom Hairston	
First Mate	Don Dressel	
Log Keeper	Doug Yumoto	
Purser	Jon Sanford	
Editor	Karl Zingheim	

Or, write in your nominations	For office



Show us Your Best

2022 SAN DIEGO COUNTY FAIR

DESIGN IN WOOD

2022 ENTRY TIMELINE

Entry Deadline Friday, April 29
 Notification of Accepted Projects Wednesday, May 4
 Shipped Entries May Arrive Tuesday May 17 - Tuesday, May 24
 Entry Delivery Tuesday, May 24: Noon - 8pm
 Awards Monday June 6: 7pm - 9pm
 Fair Dates Wednesday June 8 – Monday July 4 (closed Mondays and Tuesdays in June)
 Entry Pick Up Wednesday July 6: Noon - 8pm

ENTRY FEE

\$25 per entry (non-refundable).

ENTRY LIMIT

Three (3) entries per exhibitor in all classes combined.

ENTRY CHECKLIST

- Read this entire brochure, decide what to enter
- Enter online and pay entry fees by deadline at <https://sdiego.fairwire.com>
- Save email confirmation, entry delivery instructions will be emailed following entry deadline
- Deliver or ship entries
- Pick up entries

NEW THIS YEAR

- Fair Theme: “Heroes Reunite”, Celebrate Superheroes (from local health workers to fictional heroes) by entering your theme-inspired creations

CONTACT

Agriculture & Education Department | Design in Wood
 (858) 792-4207, Monday through Friday 10am - 3pm
 (extended support to 7pm on entry deadline)
entry@sdfair.com

2260 Jimmy Durante Blvd, Del Mar, CA 92014

ELIGIBILITY

Design in Wood is an international exhibition of fine woodworking presented in association with the San Diego Fine Woodworkers Association, open to all interested woodworkers 18 and older.

FAIR TICKETS

Exhibitors will receive two (2) Exhibit Access Passes.

JUDGING

Design in Wood is a two-tier, juried show. Tier-1 judging, from digital images, determines which entries will be accepted. Tier-2 judging takes place on-site where judges determine winners. Projects that do not adhere to the requirements will be disallowed. Judging panels will consist of master woodworkers and industry professionals. Judges may reassign entries to the proper class. The decision of the judges is final.

**Need help photographing
and/or uploading your
wood project?**

Contact us and schedule
an appointment.

Judging Criteria: Design Integrity, Understanding and Use of Materials, Use of Form and Color, Overall Craftsmanship, Appearance and Quality of Finish.

DELIVERY & PICK UP

Entries may be delivered or shipped to the Fairgrounds. Accepted entries for Tier-2 judging will be emailed delivery instructions.

If shipping, notify the Agriculture and Education department at entry@sdfair.com with an estimated delivery date. The Fair is not responsible for lost or delayed shipments and assumes no responsibility for damage to shipped entries.

Ship to: San Diego County Fair
Agriculture and Education Dept
Design In Wood Attn: Ed Gladney
2260 Jimmy Durante Blvd., Del Mar, CA 92014

A claim check for entry pick up will be issued to each exhibitor upon entry delivery and must be presented at the time of entry pick up. If you are unable to pick up your project, you may arrange for another person to bring in your claim check with a signed written authorization from you or include a pre-paid return label from the shipper (UPS or USPS) with your entry when it arrives.

All entries **must** be displayed during the run of the Fair. Entries not picked up become the property of the San Diego County Fair and will be disposed of promptly.

RULES

1. Local and State Rules apply to this competition, available at sdfair.com/entry.
2. No entry will be accepted should the exhibitor describe conditions under which they will exhibit. The 22nd DAA (San Diego County Fair) and Fine Woodworkers Association will not be responsible for loss or damage of any kind. It is the exhibitor's responsibility to purchase insurance, if deemed necessary.
3. Works previously displayed in this exhibition are not eligible.
4. Entries must be made primarily of wood and must have been created by the artist whose name appears on the entry registration. Entries, any portion of which were produced under the supervision of an instructor or those constructed from kits, are not eligible.
5. Photos of completed entry must be submitted with each entry online.
6. Once registered, changes in description, title and price may not be changed. Substitutions will not be accepted. Enter information carefully and proofread to ensure accuracy on printed materials.
7. Work must be in good taste and suitable for family viewing.

SALE OF WORK

All work on display will be considered for sale at the price indicated during entry registration. Woodworkers must indicate on the online entry form if entries are not for sale. If no price is listed during registration, the item will be marked NFS. Listing a selling price during the online registration authorizes the Fair to give your phone number to interested buyers. No sales are allowed during the Fair. All sales will be handled by the exhibitor and the buyer.

DIVISION 1101 CLASSES

- Class 001** Contemporary Woodworking - Furniture
- Class 002** Contemporary Woodworking - Accessories
- Class 003** Traditional Woodworking - Furniture
- Class 004** Traditional Woodworking - Accessories
- Class 005** Art Furniture
- Class 006** Chairs - (Furniture Made for Seating)
- Class 007** Furniture & Accessories Designed & Created by Computer - Laser and/or CNC
- Class 008** Made for Children
- Class 009** Model Building - Scale
- Class 010** Model Building - Not to Scale
- Class 011** Musical Instruments
- Class 012** Clocks
- Class 013** Veneering/Marquetry - Furniture
- Class 014** Veneering/Marquetry - Art
- Class 015** Veneering/Marquetry - Art Designed & Created by Computer Laser and/or CNC
- Class 016** Wood Turning - Face Work: Perpendicular to the ways of the lathe
- Class 017** Wood Turning - Center Work: Parallel to the ways of the lathe
- Class 018** Wood Turning - Embellished/Mixed Media
- Class 019** Wood Turning - Laminated/Segmented
- Class 020** Wood Carving - Animals
- Class 021** Wood Carving - Birds
- Class 022** Wood Carving - Marine Animals
- Class 023** Wood Carving - Human Form
- Class 024** Wood Carving - Open
- Class 025** Scroll Saw - Intarsia
- Class 026** Scroll Saw - Fretwork (Pierced & Unpierced)

AWARDS

The following will be awarded in each class:

First Place	\$200 and Rosette
Second Place	\$175 and Rosette
Third Place	\$150 and Rosette
Fourth Place	\$ 75 and Rosette

Honorable Mention Ribbons may be awarded at judge's discretion. No exhibitor will be allowed more than two monetary awards per class; however, there is no limit as to the number of rosettes or donated awards an exhibitor may win. Award checks will be available at entry pickup. Checks not picked up will be mailed within 30 days. We reserve the right to combine classes if insufficient entries are received in a class.

Master Woodworker's Trophy - \$250, Trophy & Rosette

Theme Award - \$250 & Rosette for the exhibit that best represents the Fair theme

Robert & Janet Stevenson Award for Technical Excellence and Innovation - \$200 & Rosette

DONATED AWARDS

The San Diego County Fair assumes no responsibility for awards donated by clubs, firms or individuals.

Fine Woodworking Magazine

Best of Show - \$1,000 Cash and Rosette

Frost Hardwood Lumber Co.

Sponsor's Choice Perpetual Trophy Award

\$250 value in merchandise and plaque

Apollo Sprayers Inc. Excellence in Finishing

Each Award to receive a \$250 gift certificate

Contemporary Woodworking Furniture

Traditional Woodworking Furniture

Art Furniture

Musical Instruments

Woodworker West Magazine

People's Choice Awards

First Place \$300

Second Place \$200

Third Place \$100

San Diego Maritime Museum Perpetual Trophy

Best Scale Model Ship

First Place \$500 and Rosette

Second Place \$200 and Rosette

Third Place \$100 and Rosette

The Regular Cut-Ups and The San Diego Seaside

Scrollers Awards for Fretwork & Intarsia

To qualify for these awards, you must be a member of a Southern California Scroll Club as of close of entries and have never received an award in the category you enter.

Fretwork \$200 and Rosette

Intarsia \$200 and Rosette

San Marcos Hardwood Lumber Co.

Best New Winner/Entrant Award

To qualify for this award, you must have never entered or entered but not won an award in the DIW exhibition.

\$250 Gift Card.

San Diego Wood Turners (4 Awards for \$125 and a Rosette each)

To qualify for these awards, you must be a member of SDWT as of close of entries.

Face Work - Perpendicular to the ways of the Lathe

Center Work - Parallel to the ways of the Lathe

Embellished Mixed Media Wood Turning

Laminated/Segmented Wood Turning

Woodworker's Journal Excellence in Design

\$350 and Rosette

Society of American Period Furniture Makers Recognition Award for Traditional Woodworking - Furniture

\$250 and Rosette (plus for non-SAPFM members only, one-year membership in SAPFM)

California Carvers Guild

Must be a CA resident & not have won a monetary award in Design In Wood for 2 years.

Stylization Excellence \$150

Stylization Originality \$100

Urban Forest Products Award Donated by West Coast Arborist, Inc. for Best Entry of Recycled, Reused, Reclaimed or Salvaged Wood

100 board feet of Urban Hardwood

San Diego Fine Woodworkers Association

To qualify for these awards, you must be a member of SDFWA as of close of entries.

Outstanding Woodworking

In recognition of Outstanding Woodworking for 1st time Winners

First Place \$250, Trophy and Rosette

Second Place \$150 and Rosette

Third Place \$100 and Rosette

Excellence in Woodworking

In recognition of Excellence in Woodworking for previous winners

First Place \$250, Trophy and Rosette

Second Place \$150 and Rosette

Third Place \$100 and Rosette