



San Diego Ship Modelers' Guild

1306 N. Harbor Drive

San Diego CA 92101

DECEMBER 1999

NEWSLETTER

Volume 23, No. 12

“Tough Act to Follow”: Bob Crawford Makes His Report to the Guild

NRC CONFERENCE

It is with much pride and gratitude that I report that the Nautical Research Guild conference was a great success. Many of us present heard comments of “best ever,” “tough act to follow” and “great conference.” In no small part this is due to all of the hours of work put in by the organizing committee, work parties and security monitors made up of San Diego Ship Modelers Guild members.

As you may know, work on this event started nearly three years ago with only a couple of our members ever having attended a conference such as this. An organizing committee was formed with members K.C. Edwards

(vendors), Ed White (tours), Jack Klein (registrations), Fred Fraas and Bob Wright (hosts), as event chairs. About a year ago, Dick Strange moved to our area from Washington, D.C. Of particular service, Dick is the Treasurer for the N.R.G., and brought us a wealth of experience with which to work. Finally, this past summer, we were able to “Shanghai” Robert Hewitt into being the model show chair.

I had no idea, when he first came into the fold, that Robert was such a dynamo. Within weeks, he had managed to recruit a wide variety of models, find funding for various needs, and really take the bull by the horns. So

many individuals failed to include a history of their models in their registration forms. He spent weeks researching, interviewing and creating most of the histories entered on the model plaques. Without Bob (I had to get in at least one Bob instead of Robert), the show would have been a mere shell of what it became. Very well done.

Bob also got extremely lucky when he found Chuck Seiler to assist with the computer. Chuck took a basic data base, an idea, tweaked them, and entered massive amounts of information, producing a nearly flawless model registration process, wherein modelers

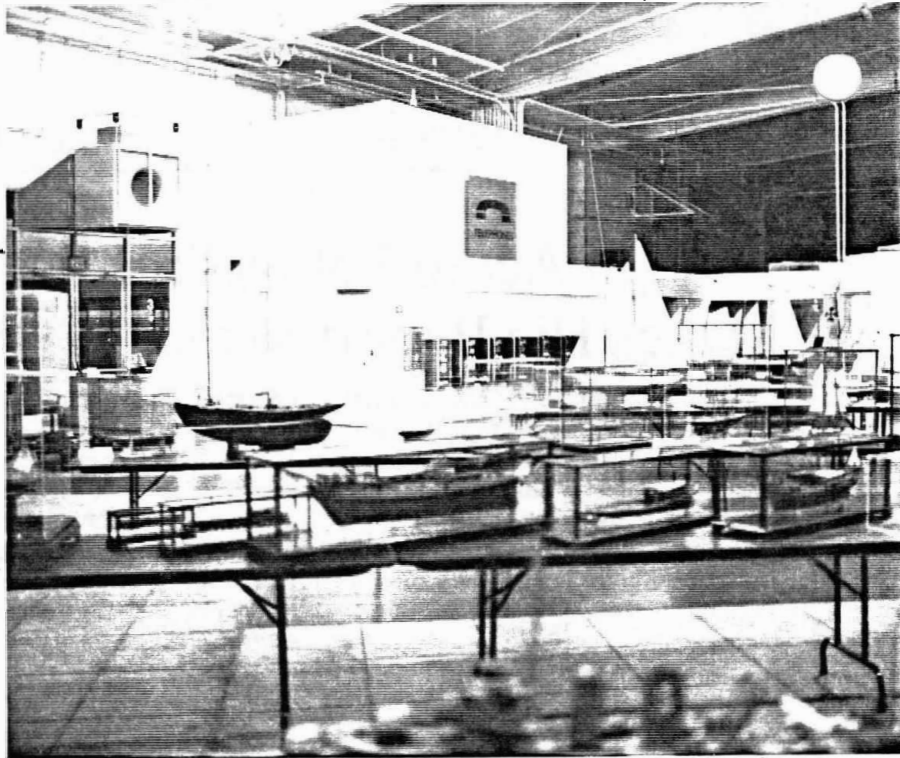


At the Cruise Ship Pier Nov. 4-7

NRG

CONFERENCE

Another Look at the Cruise Ship Pier



Some Conference Statistics

202 people at the Star of India Reception
\$788 bar tab
173 conference technical session attendees
201 dinners

133 beef
63 Chicken
5 Vegetarians
\$850 bar tab

86 Harbor tours

102 Marathon attendees

13 Wild Animal Park tour attendees

25 Sea World attendees

17 San Diego Zoo attendees

122 models registered

275" Length of largest model (U.S.S. Nimitz (CVN-68))

.5" Length of smallest model (chip in the bottle)

5 models not registered

1 attempted model theft

1 kleptomaniac registered

22 sets of Medea Plans sold

7 sets of Star of India Plans sold

106 individuals registered for

384 room nights at the Holiday Inn on the Bay

\$18,500 taken in (after various refunds)

\$18,000 (bills still coming in) out

2200 cruise ship passengers passed through model show boarding their ship Saturday

6-7 reams of paper used for various handouts

367.5 volunteer hours NRG week end

150 hours by volunteer organizing committee over 2-3 years

3 computer ink cartridges replaced

14,842 kb in NRG database

2,602 kb in Model show database

347 cloisennet pins distributed (I still have three left)

1 Nervous breakdown (conference organizer)

and their models could be rapidly checked in and out, and an attractive label could be generated for each entry. Chuck and Robert Hewitt spent nearly the entire four-day conference in the Cruise Ship Terminal (ask them about all the fun on Saturday with the Carnival ship in).

Meanwhile, across Harbor Drive, in the Holiday Inn on the Bay, Jack Klein did a magnificent job of organizing, troubleshooting and keeping the registration process humming along like a well-oiled machine. He too was assisted with some great computer types like Gary Emory, Jackie Jones, Bob McPhail and Nick Rugen. We unfortunately had some real quirks in the system that took some creative energy to sort out. Everyone did a wonderful job of getting nearly 200 registration packages distributed correctly.

There were moments where I wasn't sure that Ed White quite understood the "tour marathon" concept, but I need not have worried, as he and his son, Bill White, pulled off all the tours with little or no hassle. Appearances can be deceiving, but everything went extremely smoothly, and if there were problems, none of our guests noticed. Also, thank you Bill for helping sort out some of my many computer problems.

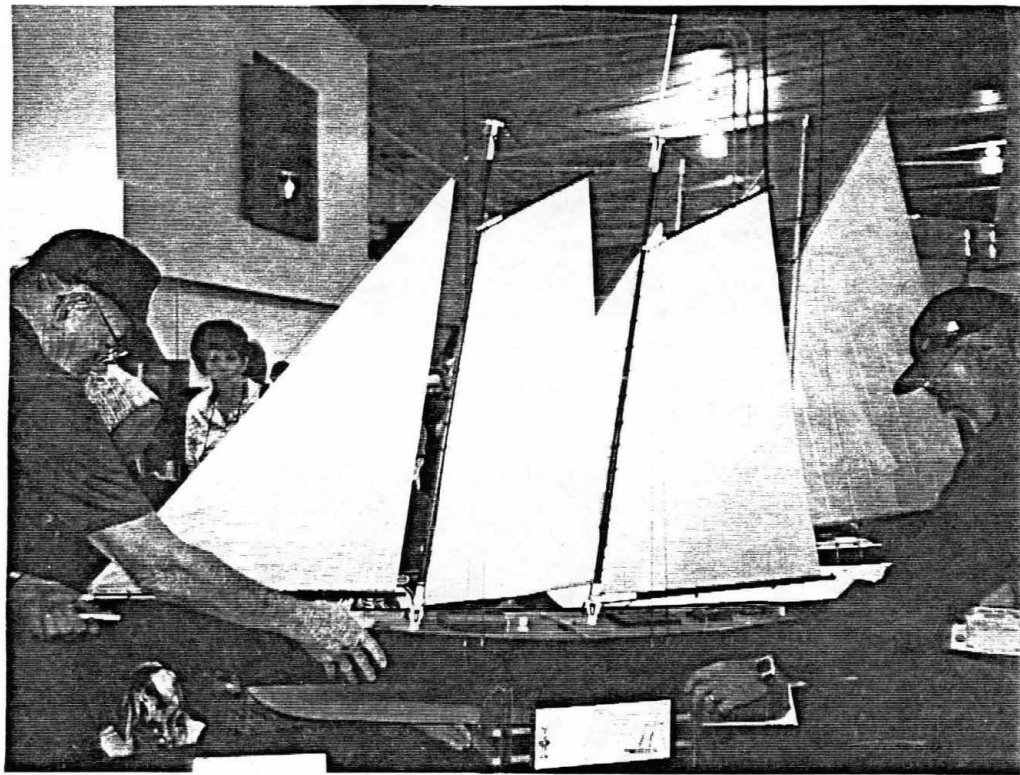
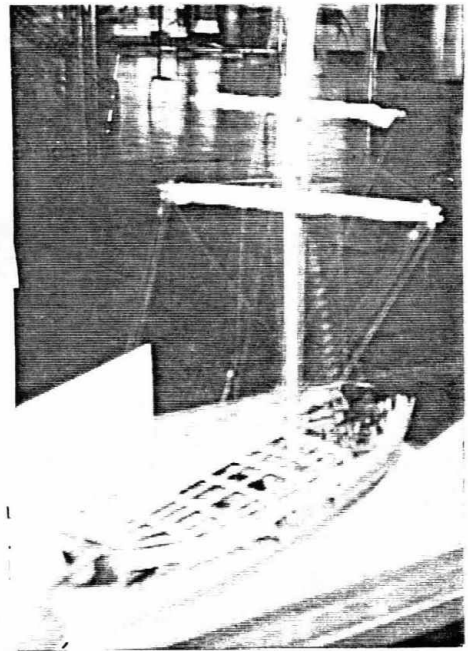
One other individual effort stands out from this event. John De Friest came out of nowhere and for the two weeks prior to and included in the N.R.G. conference was everywhere, doing everything. From polishing brass and cleaning *Medea's* engine room for the Wednesday N.R.G. steaming, to organizing registration and model packets, to walks between B Street pier and the Museum too numerous to count, to security at the model show, messenger service, etc. etc. . . . no job was too big or too small. Thanks, John.

Finally, my thanks to everyone else who put in an effort to make this conference work so well. We had attendees from Norway, France, Canada and all over the United States who saw what a great community, Museum and wonderful craftsmen we have here in San Diego. Thank you to everyone involved.

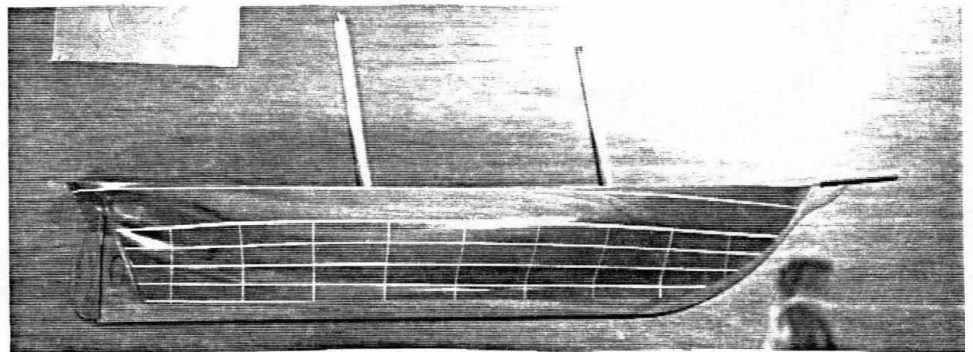
Sincerely,
Bob Crawford
Conference Chair

Models At the Show: *Sail*

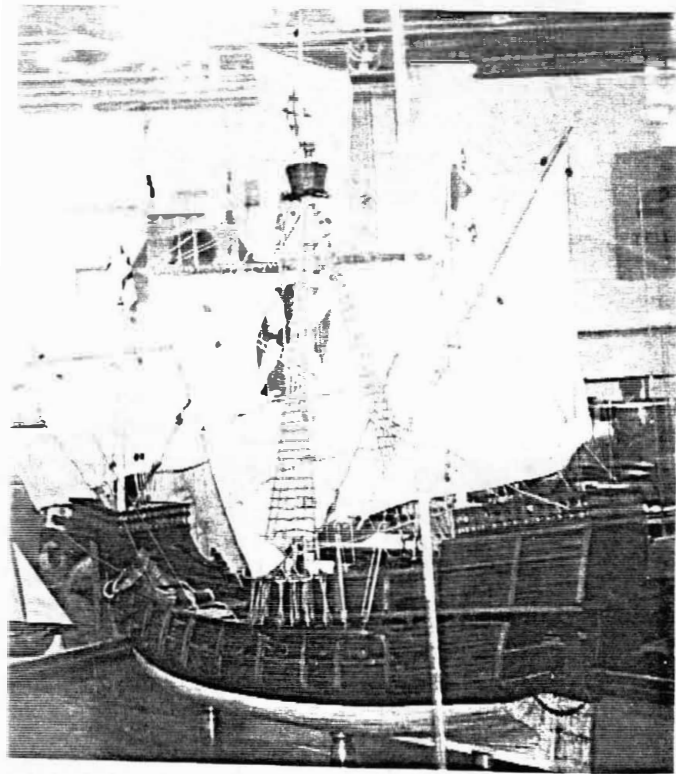
PHILADELPHIA, the oldest American man of war, built and sunk in 1776. Raised hulk now in Smithsonian. Model by Dr. Bill Brown of Fallbrook



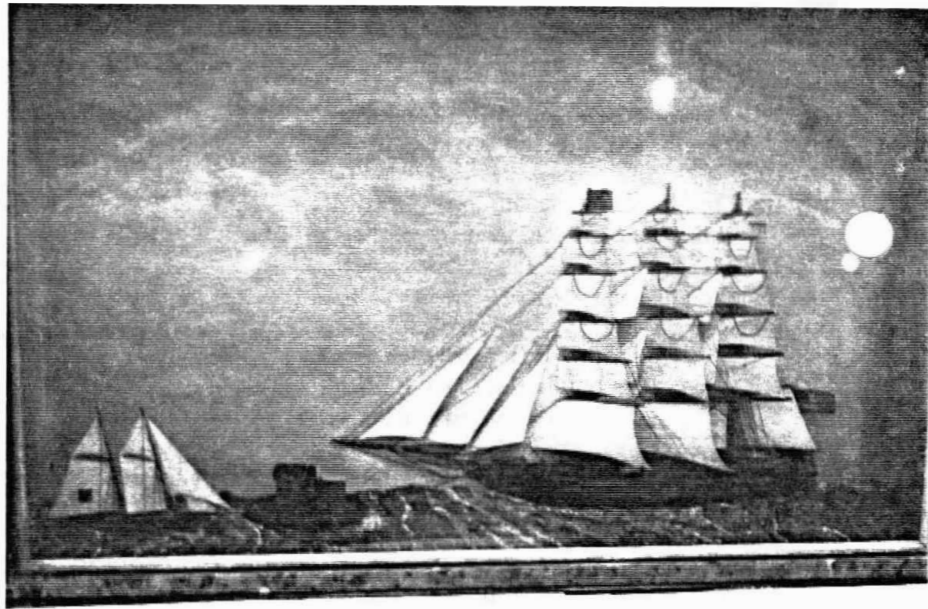
Baldheaded schooner MALABAR, by Stuart Stanfield of San Diego



CALIFORNIAN, 1850 revenue cutter, by David Yotter of Irvine



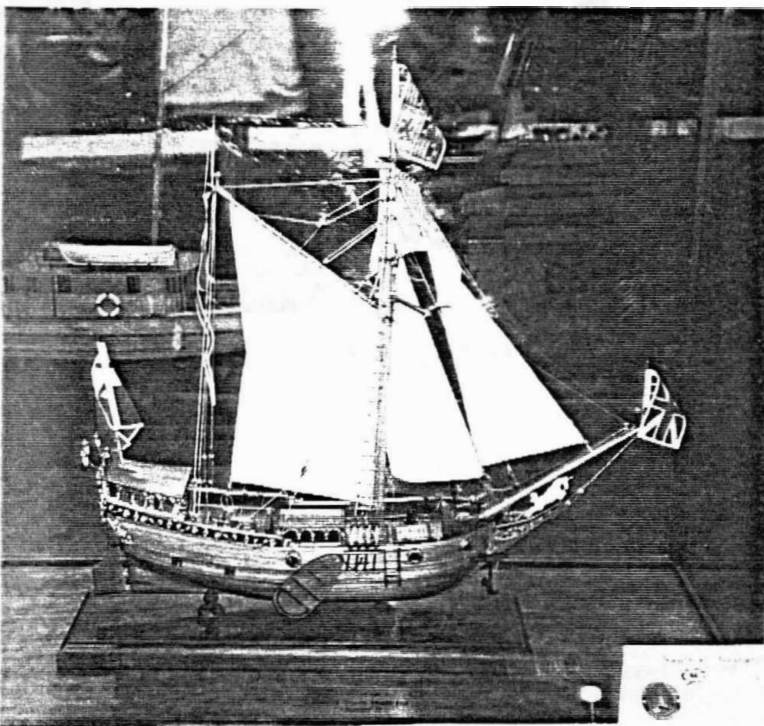
Columbus's SANTA MARIA built by Manuel Acuña Barbolla and Margarita Lopez Baleazar in Tijuana



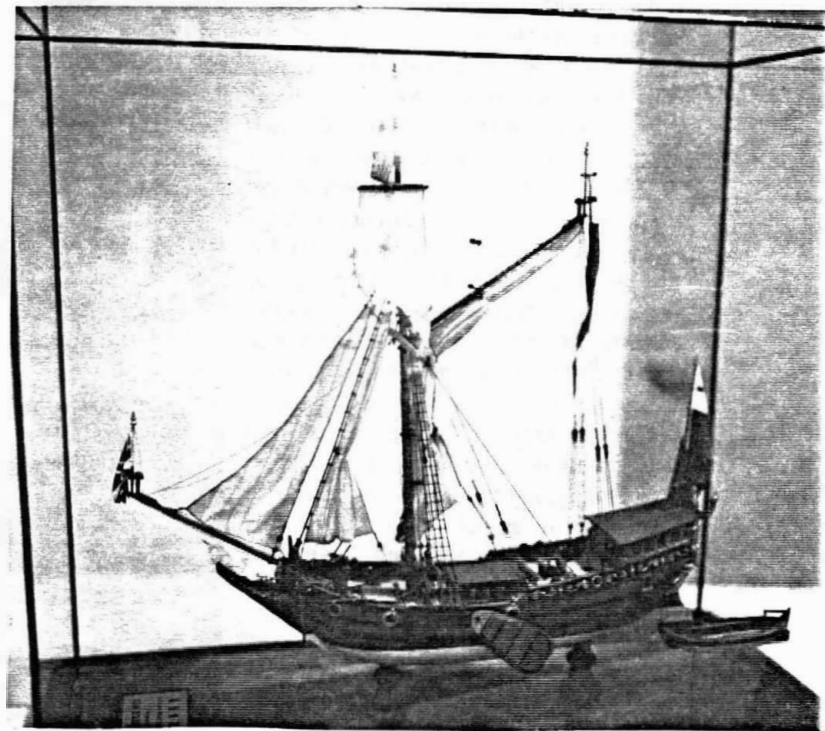
Three-dimensional picture of FLYING CLOUD, exhibited by Ed White of San Diego and made by his grandfather

NRC

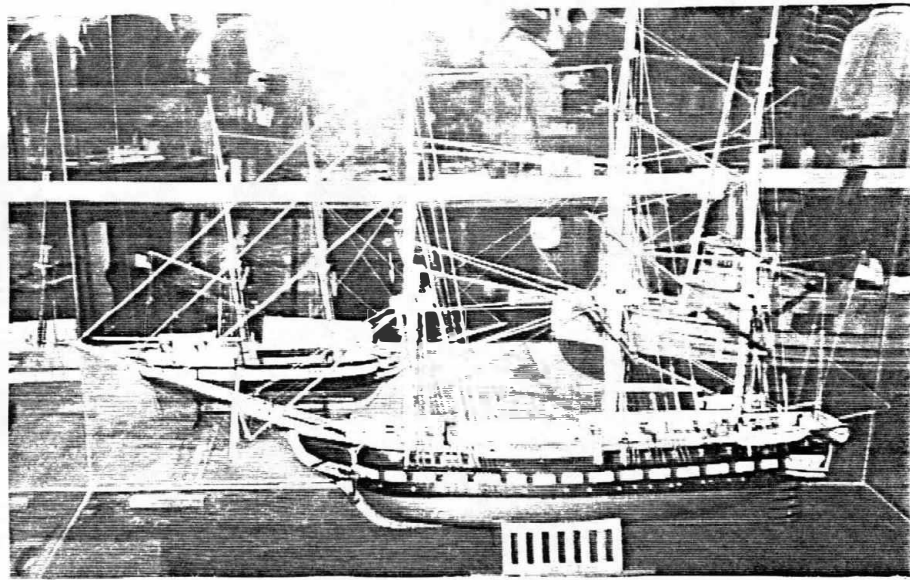
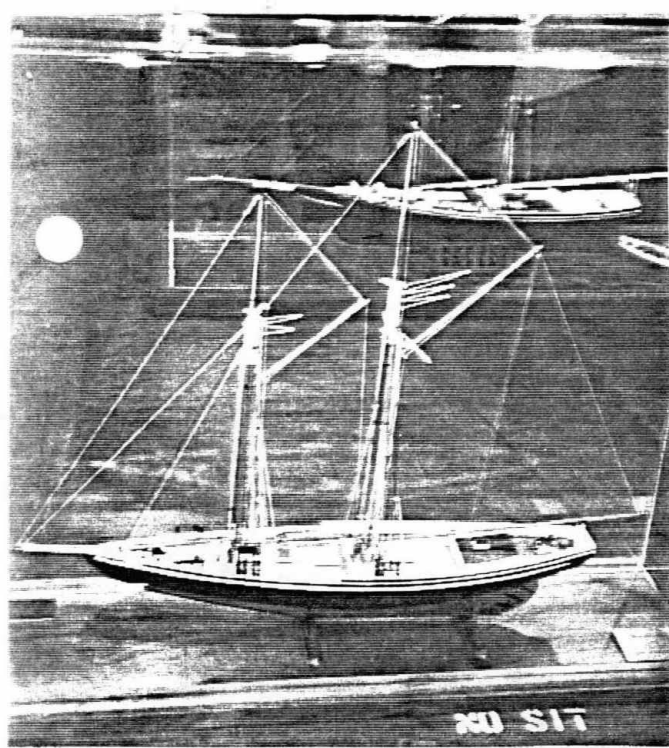
CONFERENCE



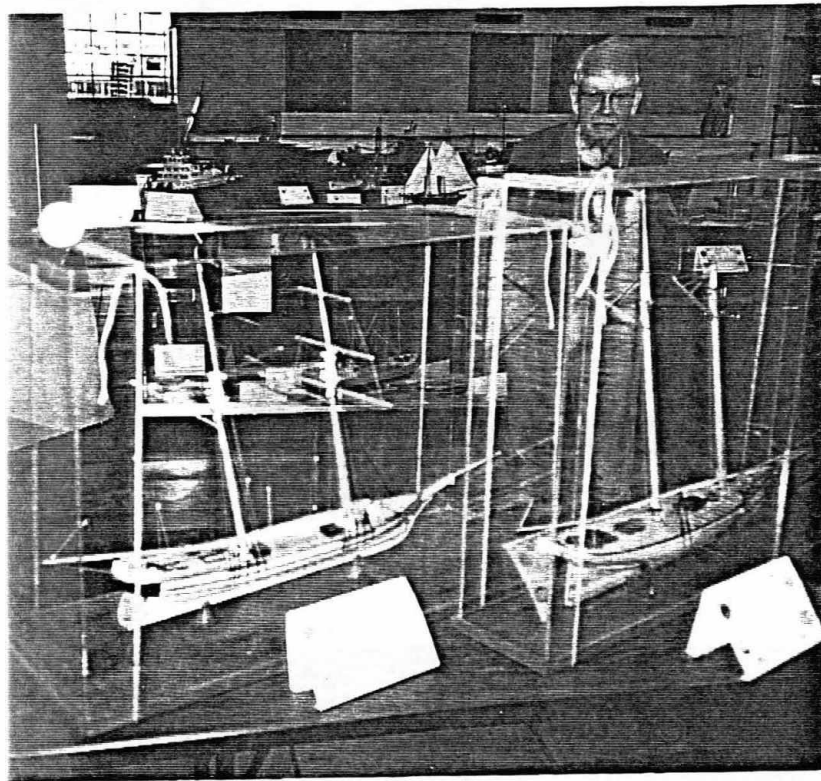
1660 Yacht MARY by Nick Rugen of San Diego



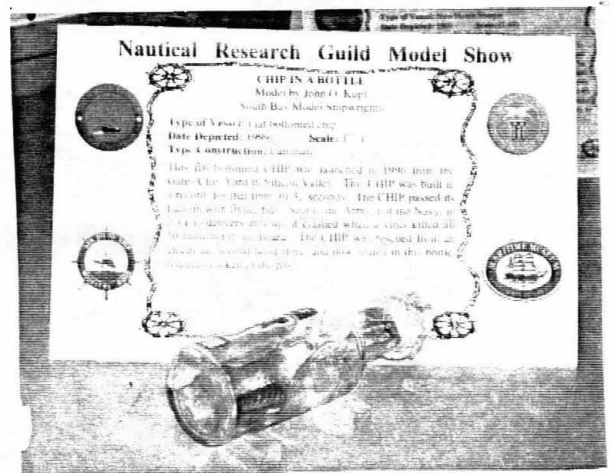
Yacht MARY by Jean Eckart of Los Altos



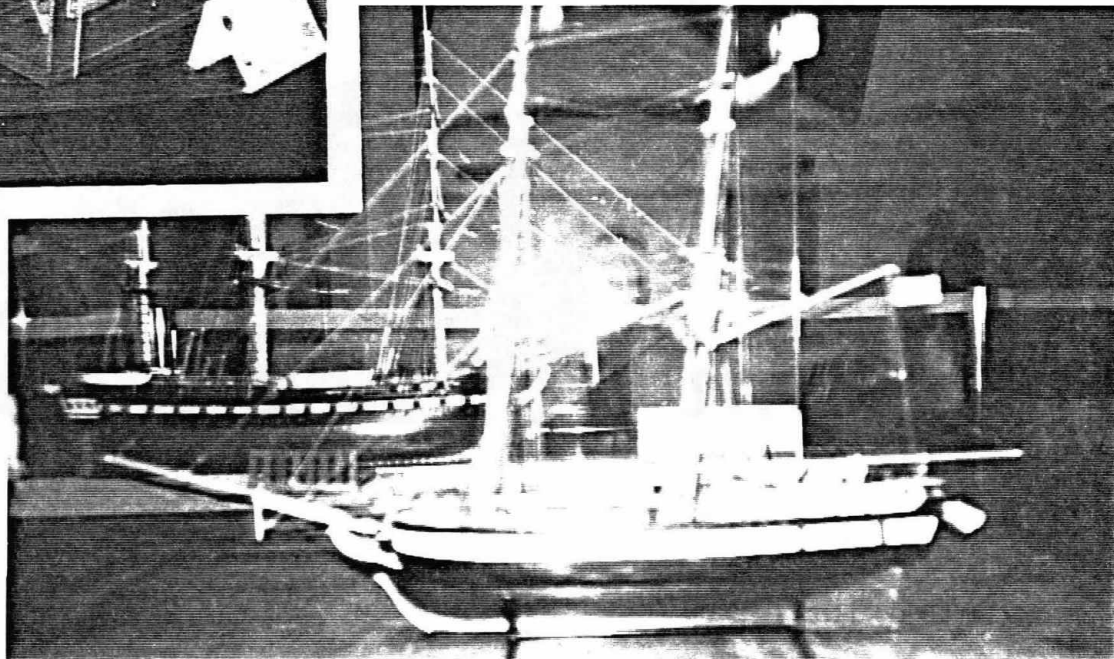
BLUENOSE by Royce Privett and his CONSTITUTION



Revenue cutter JEFFERSON DAVIS and yacht AMERICA by Bill Forbis of San Diego



CHIP IN A BOTTLE by John Kopf of Cupertino. The chip came from inside a computer.

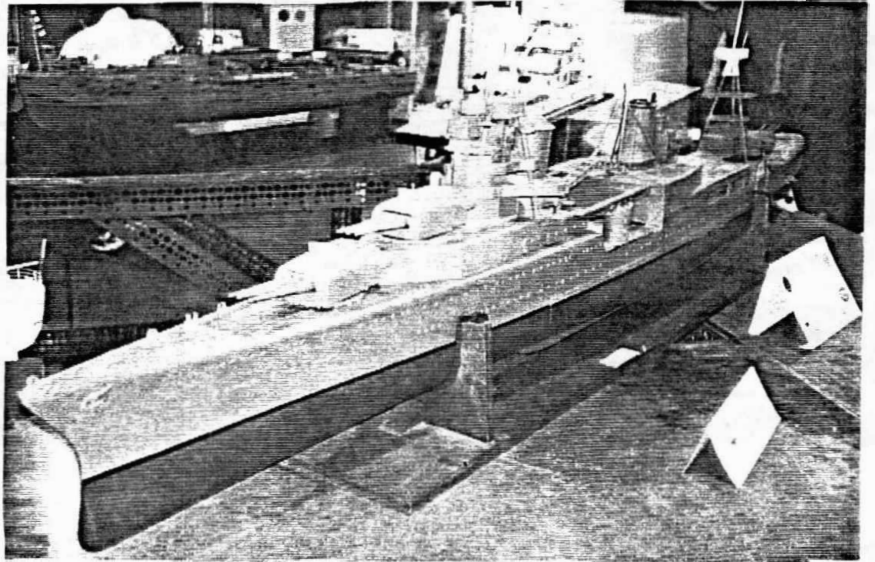


1839 Hermaphrodite brig PORPOISE , by Dr. Bill Brown

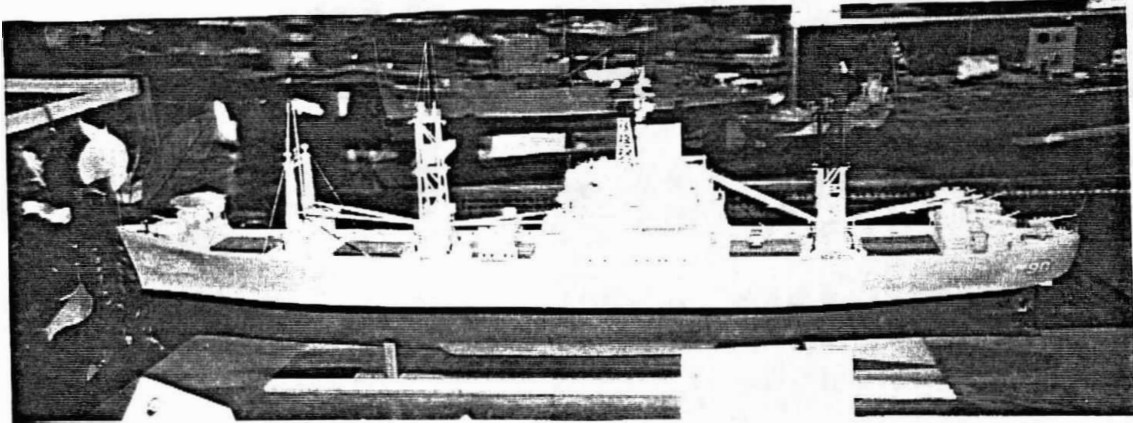
NRG CONFERENCE



Victory ship UNITED VICTORY and Liberty ship JEREMIAH O'BRIEN by Fred Fraas of San Diego



U.S.S. CHICAGO by Jim Hawkins of San Diego

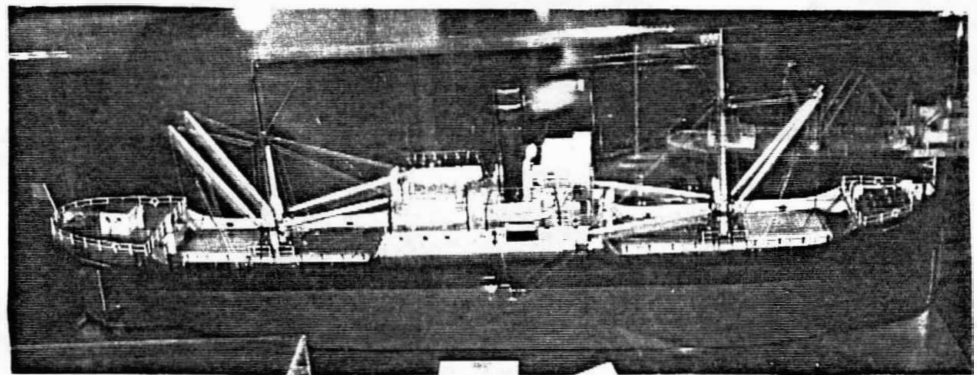


U.S.S. WHITESIDE, by Bob O'Brien of Poway, served at Iwo Jima and Okinawa and later was sunk as a target ship off Astoria

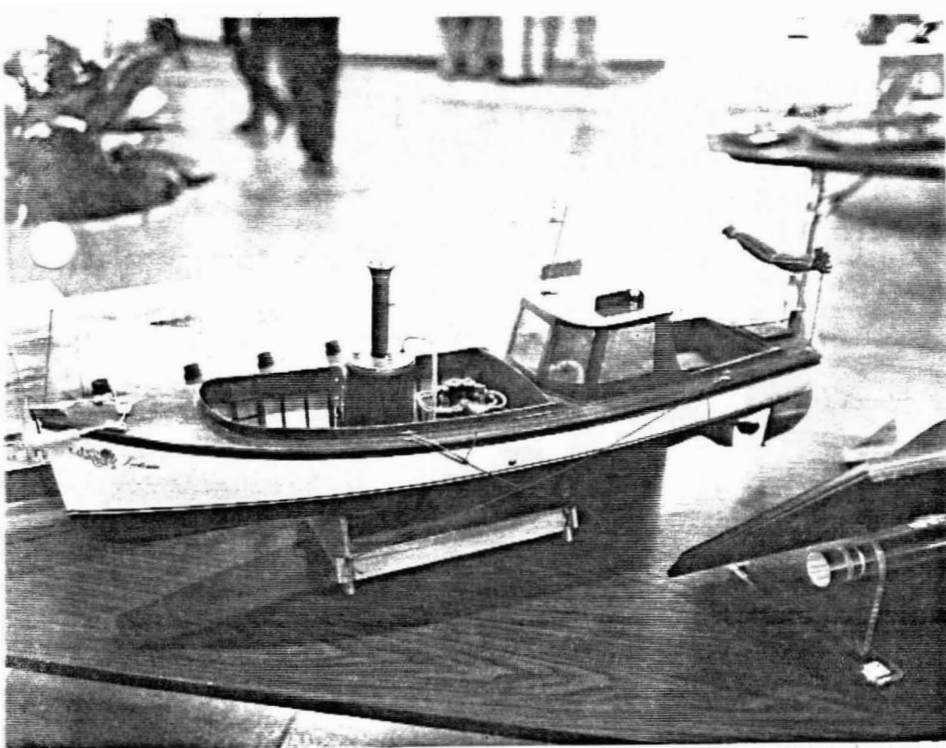
Models

At the Show:

Steam



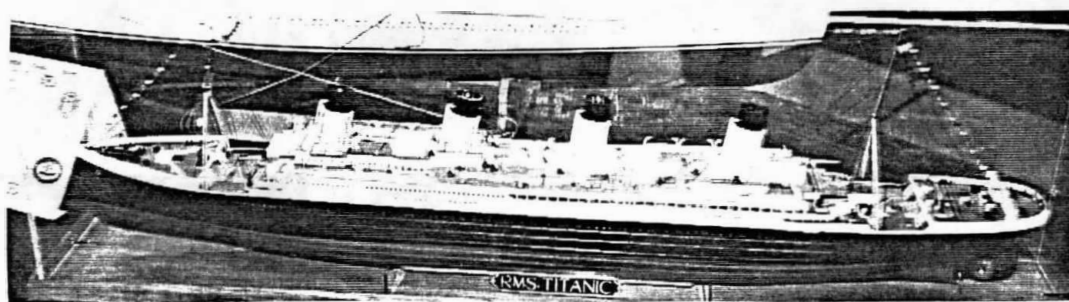
PACIFIC STAR by Phil Mattson of La Jolla



Steam Launch VICTORIA BY Joe Bompensiero of San Diego



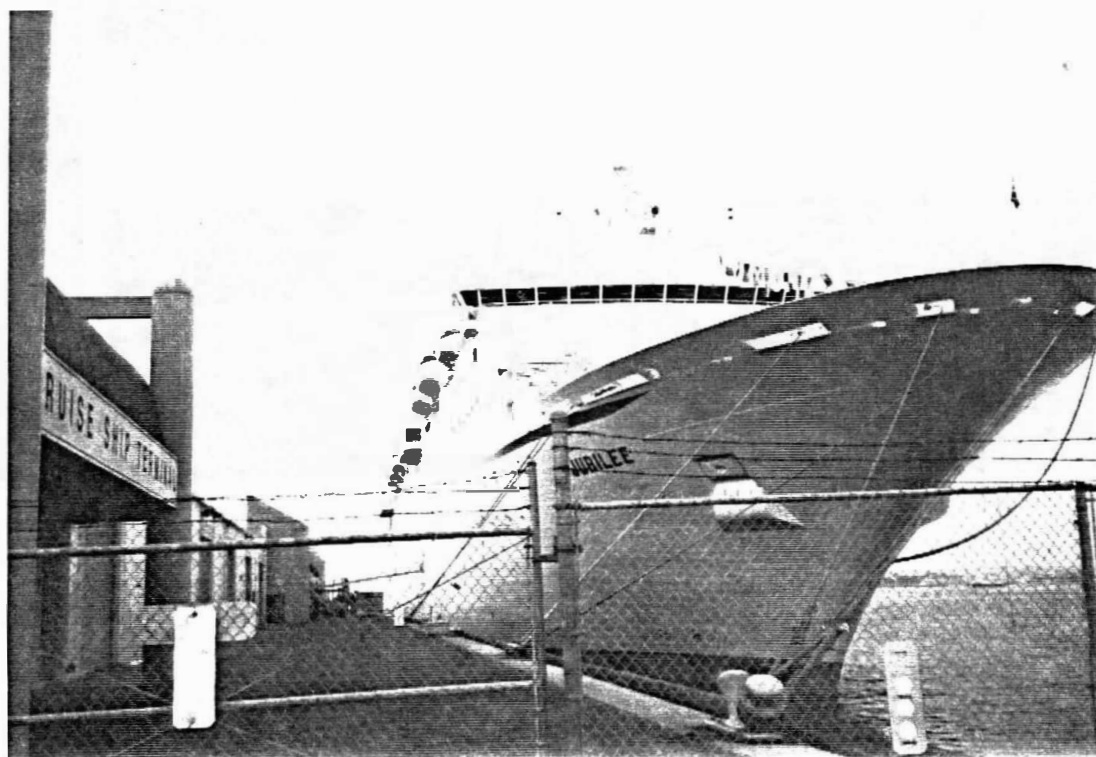
MOCHA DICK by Robert Hewitt of San Diego (see Minutes)



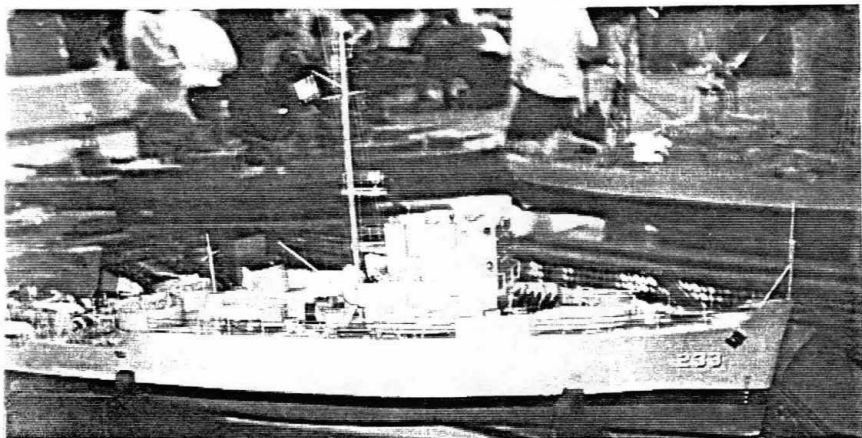
TITANIC by Ron Sawyer of San Diego. A tiny Kate stands in the bow.

NRC

CONFERENCE



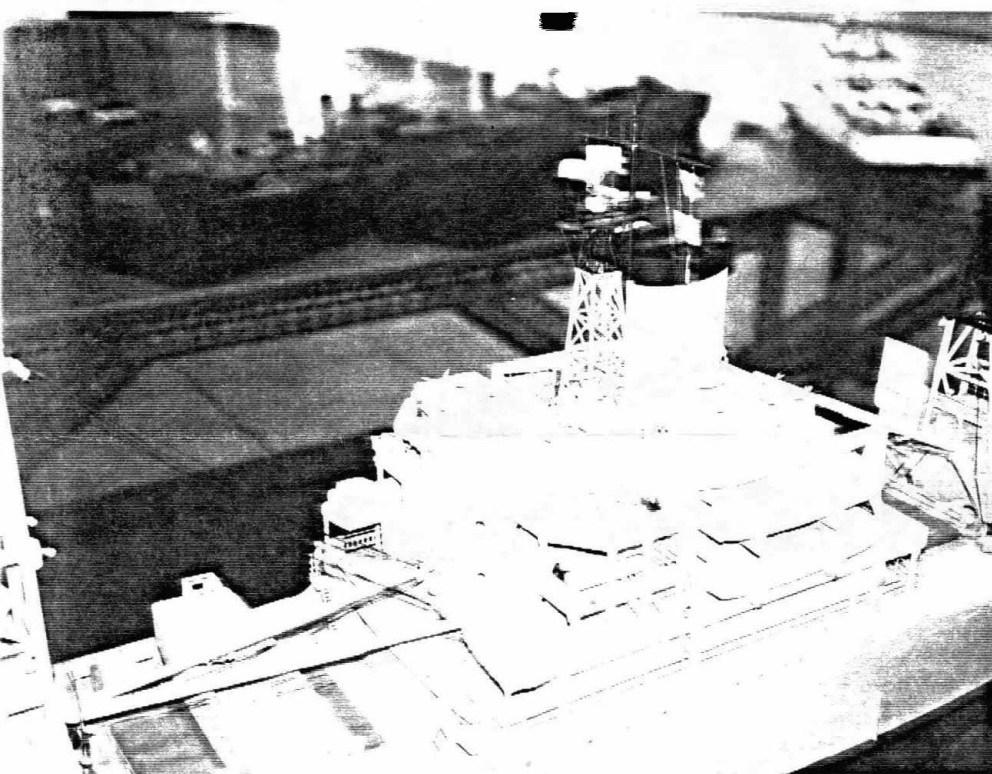
Oops! a real ship. Throngs from the cruise ship Jubilee mingled with N.R.G. exhibitors on the pier.



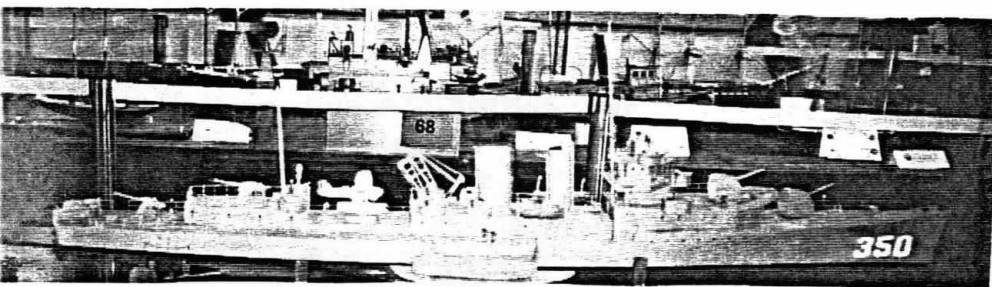
Minesweeper FACILITY BY Arthur B. Aydelotte of San Diego



Selling bait to fishermen, RIVAL cruises the bay. Model by Robert Hewitt of San Diego



Bob O'Brien's WHITESIDE: Close-up of the bridge



U.S.S. HULL by Evan Hull of San Diego



SHIP IN BOTTLE by Phil Mattson of La Joll

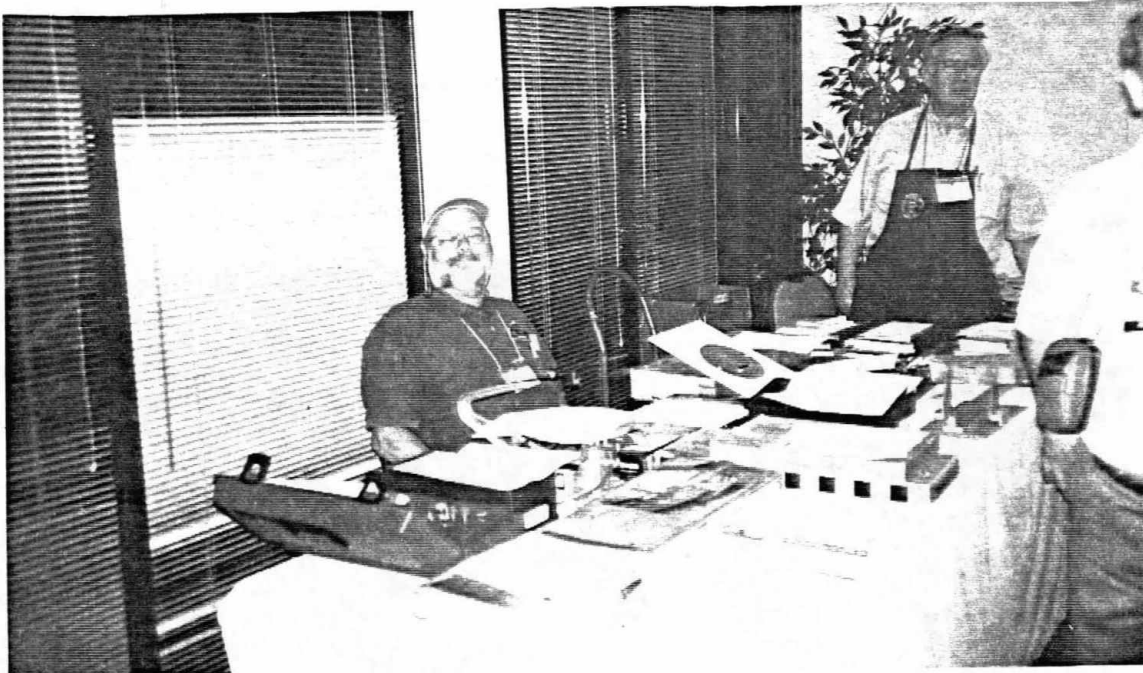


*Meanwhile, Back
At the Holiday Inn*

Scenes at the Conference
Room and in the Vendors
Area, including Abe
Taubman's fabulous plans
books



NRG
CONFERENCE



K.C. Edwards in the Vendors Area

THRU THE LUBBERS HOLE

By Robert Hewitt



I would like to thank all of the members of our guild who participated in the Nautical Research Guild Conference. My portion, the model show, could not have had the success we achieved without your help. To point out a few- Chuck Seiler, who typed out the placards and efficiently organized the model show entry procedure, Lew Johnson, Ernie Andrew, Don Bienvenue, Roger Roth, and of course John De Friest who showed untiring energy. The show set-up was a breeze with their help.

We had a total of 123 ship models with 60 of them from our guild. At first we were worried that we would not have a good showing, but it is my understanding that we had more models by far than any other Nautical Research Guild show.

I received a letter from Tim Riggs last week stating that we have set a standard for future NRG gatherings. Many thanks to Mr. Crawford for the great effort he put forth.

Our model contributors are:

Ernie Andrew
Arthur Aydelotte
Gus Avila
Jim Balesteri
Joe Bompeberio
Dr Bill Brown
Robert DeBow
K. C. Edwards
Gary Emery
Bill (Boss) Forbis
Fred Frass
Jim Hawkins
Evan Hull
Lew Johnson
Phil Mattson
John McDermott
Robert O'Brien
Royce Privett
Nick Rugen
Ron Sawyer
Dave Shelkey
Stuart Stanfield
Tom Taylor
Ed White

NRG
CONFERENCE

Minutes of the Nov. 10, 1999 Meeting

For some utterly baffling reason, the meeting calendar in the November newsletter was printed without a ring around the date for the affair. Members apparently took this as a challenge, and, remembering that the date is always the second Wednesday (last month the tenth) showed up in large numbers.

Twenty-seven people were on hand, including several guests and new members. Guild Master **K.C. Edwards** revealed his secret for enticing people to join: "I tell people it's not a hobby, it's a sickness."

Coming just a couple of days after the Nautical Research Guilds Conference and Exhibition, the success of that event was on many minds. **Dick Strange**, who is Treasurer of the N.R.G. as well as the former Captain of the Washington (D.C.) Ship Model Society, said that the number of models on display—123—was the largest ever for an N.R.G. conference.

Bill Kelly Fleming, longtime San Diego Guild member who came to the meeting from Boston (where he is active in the U.S.S. Constitution Model Ship Guild) called the San Diego conference "one of the best in a long time. Member **Dave Shelkey** summed up the feelings of many when he said, "Never in my life have I ever seen so many models." He took many of the better pictures of the models shown in this issue.

Robert Hewitt took note of the surprising but not

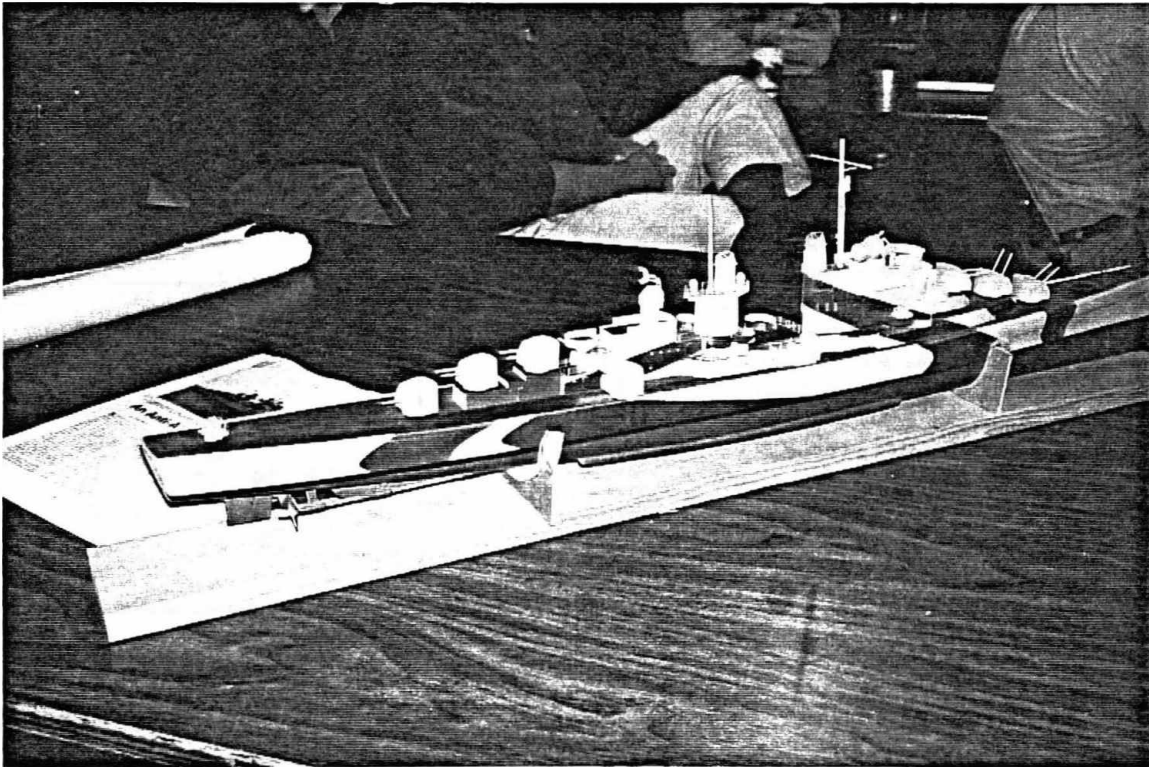
unwelcome mooring of the cruise ship *Jubilee* at the same pier where the N.R.G. exhibition was staged. Throngs going back and forth from the ship overflowed into the display area, but at least the exhibit was seen by unexpectedly large numbers of people. Nevertheless, Hewitt called the *Jubilee* "the most screwed-up cruise ship I've ever seen."

Hewitt later proposed discussion of ideas for programs at meetings, and **Krystof Bodzon**, inspired by one of the sessions at the N.R.G. conference, urged recruiting guest speakers. "I learned a lot from **Phil Mattson**, a master silver soldering man," said Krys, who offered to drive Phil to and from Guild meetings if necessary. Krys also undertook to find other speakers.

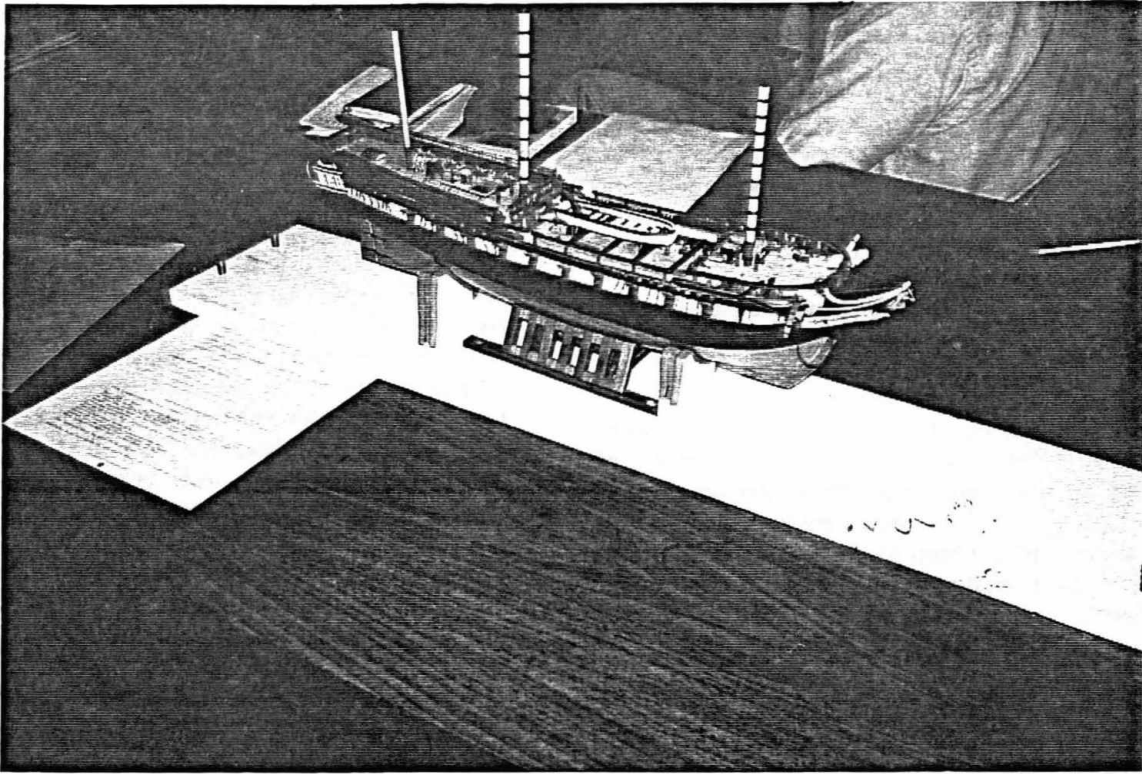
Bill Fleming described how blocks were rope-stopped on ancient ships, techniques he learned on a visit to the rigging shed of a replica of *Friendship* being constructed in Salem, Mass. (He needed this knowledge to produce hundreds of blocks for a *Vasa* he has been building "forever.")

One technique involves the use of a tapered dowel sizing gauge to eliminate having to measure each rope rign individually. Another is a kind of splice, made by unlaying the strands and re-laying them at spaced-out intervals to make a ring.

Bill also recommended a product called Fraycheck, available in the notions section of department stores. It stops fraying on model rigging, evaporates fast and stiffens ratlines and, presumably, lines being poked through holes in deadeyes and he like.



John McDermott's U.S.S. San Diego



Royce Privett's Essex

Introducing himself, New Member **Al A. Adams** described a life spent largely at sea under sail—310,000 miles in all, including such adventures as eight voyages to Hawaii and three transatlantic yacht races. He has belonged to half a dozen yacht clubs, several times as commodore. His profession is marine surveying. He's working on a shadow-box model of a four-masted ship.

Show & Tell. Perhaps appropriately for an audience numbed by numbers at the N.R.G. exhibition, only three members brought models.

Royce Privett's Essex has sprouted three lower masts, plus their fighting tops. Other additions include scratch-built ladders and gun carriages and a 32-ft. launch, resting on a cradle amidships.

John McDermott gave members a first look at an ambitious model named for the hometown, the U.S.S. *San Diego*, CL 53, striking in camouflage paint. It's scratch-built plank-on-bulkhead, overlain with fiberglass. She's about 50% finished. The scale is 1:192.

Once again, **Robert Hewitt** produced a total surprise: a model of a sperm whale knocking a whaleboat out of the water.

He says it was "inspired by the Big Little Book 'Walsh Tubbs and Captain Easy,' a book that I had when I was 10-12 years old. *Mocha Dick* was an actual whale named for his kill of sailors off the island of Mocha off the coast of South America."

The whale is carved in boxwood, with holly teeth. The oars and ship's boat are of holly. A shark of holly lures in the background.

Guild Officers Nominated

The Guild's Nominating Committee—composed of Bob Crawford, Jack Klein and Fred Fraas—has made its selections, and will present them to the membership at the January meeting, where other nominations can be offered. They are:

Guild Master Jackie Jones
 First Mate..... K.C. Edwards
 Purser..... Bob McPhail
 Newsletter Editors..... Bill Forbis, Fred Fraas

The election will take place at the February meeting.

December						
S	M	T	W	T	F	S
			1	2	3	4
5	6	7	8	9	10	11
12	13	14	15	16	17	18
19	20	21	22	23	24	25
26	27	28	29	30	31	

The next meeting will take place on Dec. 8 aboard the Star of India. BRING CHECKBOOKS — the year 2000 dues (\$15) are due on Jan. 1.

Letter from the Editors

In their new Buick, Fred Fraas and his wife Shirley took me and my wife Margy to the 1999 Nautical Research Guild Conference's kick-off event, the starlight Star of India Reception on Friday. Right away we knew that the newsletter had to give this story special treatment. The old bark's decks were thronged with people from far and wide---202 at the end. And the ship made a purely magical space for them.

We were surrounded by---well, first of all, food and drink, banked high against the mainmast and shrouds.. We began to meet members of other clubs. I was delighted to run across, almost at once, Bill Russell, editor of the highly professional newsletter of the Ship Modelers Association (SMA), based in the Los Cerritos-Garden Grove-Placentia area..

Soon after that I was talking to Jean Eckart, who puts out the cheery newsletter of the South Bay Model Shipwrights in Los Altos (see a picture of her model on P. 4). Another editor on hand was the Rev. Bill Kelly Fleming (see P. 11) whose profession as a minister led to service on the waterfronts of San Diego and currently Boston; he once edited the rag you're reading.

Next day Fred came to my house in his RV, which had sufficient room for the seven models we took to the model show in the Cruise Ship Terminal. One look at the busy setting-up scene caused Fred to announce that this issue of the newsletter would have to add extra pages.

There, at the show's end on Sunday morning, Fred and I met Don Dressel of SMA, who writes that club's Famous Ship series. The conversation turned to the subject of model-building standards. We all agreed that what pleases the builder himself was the basic criterion. But Don had a poignant story for us. In a similar exhibit that he attended once, one model was simply too sloppy, sloppy. Asymmetrical, yards aho, Irish pennants, and so on. "Does this deserve to be on display?" someone asked.

Don pointed across the room. Seated on a bench was an old fellow with a blank stare, a white cane---and a pleased look. We'd heard about all kinds of modelmakers, but never about one who was blind. He'd built the model by touch. And obviously it pleased him.

Here's a random look at the home towns of a dozen people who attended the NRG Conference:

Camden, Maine; Vestal, N.Y.; Toronto, Canada;
Laramie, Wyo.; Owings Mills, Md.; Yorktown, Va.;
Victoria, B.C.; Los Alamos, N.M.; Paris, France;
Gloucester, Mass.; Kalamazoo, Mich.; Florence, Ore.;
Jamestown, R.I.; Austin, Tex.; Taylorsville, Utah;
Woodinville, Wash.; Sarasota, Fla.

At the November meeting, Dave Shelkey brought in three sheets of contact prints of pictures he had taken at the Cruise Ship Terminal exhibition. He has a good wide-film camera, uses high-quality black-and-white film, and gets it professionally printed. It was a bonanza for me.

The pictures Dave made for this issue are the opening area shots, plus the models *Californian*, *Flying Cloud*, *Yacht Mary* by Eckhart, *Victoria*, *Rival* and *Ship in Bottle*.

For economic reasons, I guess, this newsletter continues to be reproduced at Office Depot by copy machine, so even quality photos don't print very well. The Guild might like to consider some way to solve this problem, probably at higher cost.

The particular models were chosen for several reasons: variety, quality, geography, and quite often because the photography promised better reproduction. Some members may be miffed at being left out, and it may well be that we should apologize. But, as Fred points out, some never made it because they weren't entered. A thought to keep in mind for the next time.

In getting the newsletter ready for mailing, what's the best way to make it stay folded? For the last two issues, instead of staples we used sticky paper disks that the reader can easily tear apart to get at the delicious contents. Two reports, one from Bob Wright, suggest that the post-office's machines regard the newsletter fastened this way as something to be chewed up and swallowed.

So it's back to staples. Two of them.

In his opening article for this issue, Bob Crawford gently kids Robert Hewitt for his preference not to be called Bob. It brings to mind a couplet someone wrote about the poet Robert Burns, who had the same dislike:

*I have an inexpensive hobby,
It's simply not to call him Bobby.*

Bill and Fred

K.C. Has Moved

As of Dec. 3, Guild Master K.C. Edwards'

West Coast Model Ships

Is located in the Discount Hobby
Warehouse at
4444 Convoy St. Just south of Balboa
Ave

WEST COAST MODEL SHIPS

SPECIALIZING IN SHIPS OF WOOD
KITS • FITTINGS • SUPPLIES

WITH 24 PHOTOS OF MODELS IN THE EXHIBITION

CONFERENCE

NRB

A SPECIAL REPORT ON THE

/redacted/
Fred Fraas

66



San Diego CA 92101

1306 N. Harbor Drive

San Diego Ship Modelers Guild



SAN DIEGO SHIP MODELERS GUILD

Officers for 1999

Guild Master	K.C. Edwards	/redacted/
First Mate	Jack Klein	/redacted/
Purser	Ed White	/redacted/
Log Keeper	Open	
Newsletter Editors	Bill Forbis	/redacted/
	Fred Fraas	/redacted/

Founded in 1971 by Bob Wright and the late Russ Merrill

SCHEDULE OF ACTIVITIES

Meetings Second Wednesday of every month.
7 p.m. social, 7:30 p.m. meeting
Held on board the ferryboat
Berkeley.

MEMBERSHIP

Dues are \$15 annually
(\$7.50 after July 1).

We strongly encourage all to join the San Diego
Maritime Museum as an expression of appreciation for
the facilities provided for our benefit.