



San Diego Ship Modelers' Guild

1306 N. Harbor Drive

San Diego, CA 92101

January 1996 NEWSLETTER Volume 20; Number 1

Happy
New Year

STEERING COMMITTEE TO MEET AT POND:

Guildmaster JIM HAWKINS has called for a general members meeting at the Model Yacht Pond this coming Saturday at 10AM. The meeting's purpose is to solicit nominations for 1996 officers. It's time to give Jim and Doug a break; they've done their share. If you can't attend, try giving them a call & let'em know who you'd like to see nominated, THANKS!

FORTHCOMING EVENTS:

- 13 Jan. SDSMG Steering Committee 10AM Pond
- 17 Jan. SD Maritime Museum Membership Mtg
- 18 Jan SDSMG Meeting - ELECTIONS
- 19-21 Jan. I.M.S. Hobby Show - Pasadena

- 10-11 Febr. Mid-Winter Sail Regatta
- 15 Febr. SDSMG Meeting
- 17-18 Febr. President's Day Regatta-Tempe,AZ.

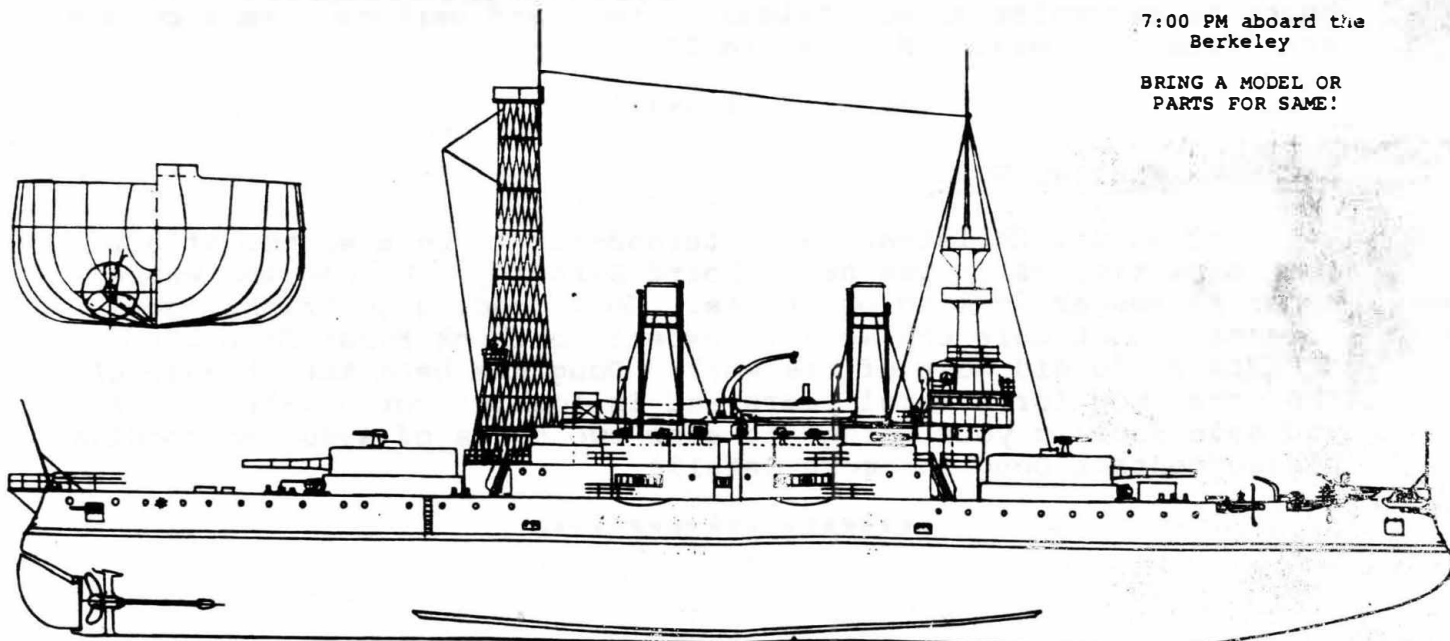
- 21 Mar. SDSMG Meeting
- 22-24 Mar. Western Model Conference & Exhibit
Queen Mary - Long Beach

JANUARY 1996						
S	M	T	W	T	F	S
	1	2	3	4	5	6
7	8	9	10	11	12	13
14	15	16	17	18	19	20
21	22	23	24	25	26	27
28	29	30	31			

NEXT MEETING NIGHT:

Thursday - Jan 18
7:00 PM aboard the Berkeley

BRING A MODEL OR PARTS FOR SAME!



USS Connecticut BB18 by Edward H. Wiswesser

SAN DIEGO MARITIME MUSEUM MEMBERSHIP PROGRAM

Wednesday, January 17, 1996 7-9 PM - Ferryboat *Berkeley*

VOLUNTEER RECOGNITION FOR 1995

Guest Speaker: Professor Albert R. Vogeler

With a Musical Performance by Johnny Walker

Join us for a presentation by Dr. Albert Vogeler of the Cal State University at Fullerton History Department and Library, a leading authority on turn of the century naval power and curatorial advisor for our upcoming new exhibit, "Images of the Great White Fleet." Dr. Vogeler's lecture and slide show will offer a fascinating and engaging look at the ships and men that first won the United States a prominent place on the world stage.

The evening will start with a performance by chanteyman Johnny Walker, who hails from Yorkshire, England and has grown to be a major influence in music and musicians of the sea.

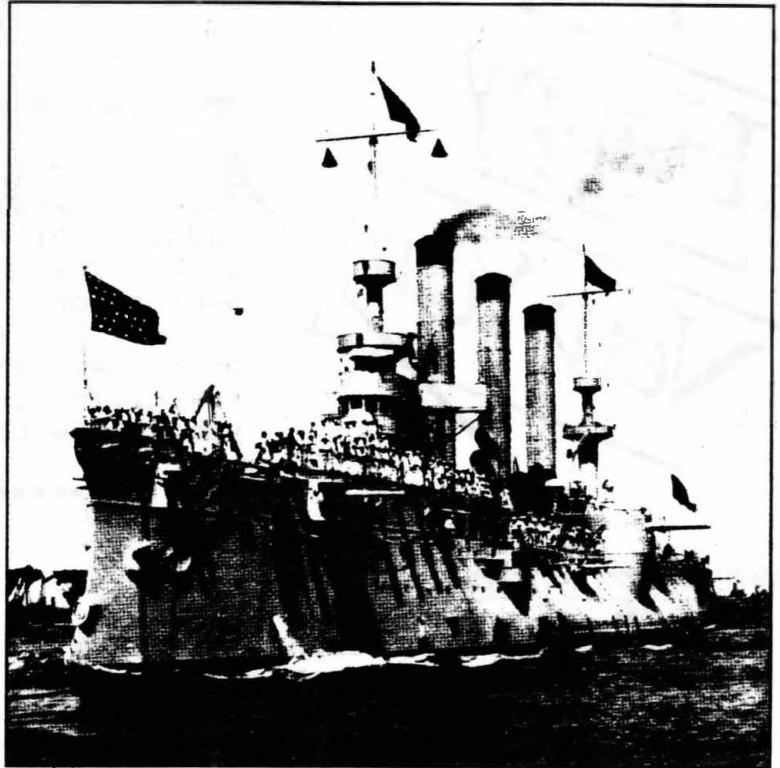
January is also volunteer recognition month. Volunteers are the lifeblood of the Maritime Museum. We hope you'll join us in honoring the many volunteers who made 1995 such a success.

The evening is also free to Maritime Museum members and their guests. Join us as we launch 1996 in style. *Bring along a friend.* This is an excellent way to introduce someone to the special magic of the San Diego Maritime Museum.



FOR MORE INFORMATION CONTACT
THE MARITIME MUSEUM AT 234-9153
7 p.m. - Social and Music of Johnny Walker
7:30 - Meeting and Volunteer Recognition
8:00 - "Images of the Great White Fleet"

Johnny Walker



SAN DIEGO MARITIME MUSEUM • 1306 NORTH HARBOR DRIVE • SAN DIEGO, CA 92101

The post card above explains it all. This meeting will be the day before our regular meeting next week. No doubt some of our members will be recognized for their volunteer work in the model shop. (They'll be listed in next month's N/Ltr.) If you've never been to one of these members meeting, come on down. You're bound to recognize an old friend or two, and perhaps make a couple new friends as well. Such a deal!!

DECEMBER MEETING NOTES:

Our annual Christmas party turned-out to be a warmer affair than expected, as it was held aboard *Berkeley*. We had the whole upper passenger deck to ourselves. Good food, good drinks, good friends...what more can we say, except to thank First Mate DOUG MCFARLAND who did most of the work. Doug has been the "keeper of the grog" now for several years and is looking for a relief. If you have room in your garage to stow two cases of assorted goodies, please contact Doug for more details.

MISSING FROM OUR MODEL SHOP:

Sometime last month our rope walker disappeared from the model shop aboard the Berkeley. This handy device is used on a continuous basis by several model shop volunteers. They'd like it back, ASAP.

We are still missing the book reported in the Nov. newsletter, i.e. Harold Hahn's "Ships of the American Revolution." This is also a frequently used book. Our check-out rules could not be much simpler, we ask only that you sign-out for it and return it in a reasonable time period, especially if someone else is waiting. ENUF SAID!

A TREAT COMING IN MARCH:

Our March meeting will feature three key members of the Nautical Research Guild as guest speakers. One will be our own BILL (KELLY) FLEMING, who moved to the Boston area several years ago. He has been a member of our guild nearly 20 years. Bill was our Purser for five years, Newsletter Editor for two more years. In 1986 he was elected First Mate, and in 1987, Guildmaster. We look forward to seeing him again.

GENE LARSON and ROB NAPIER from N.R.G. will also be here as the three will be out here to attend the West Coast Ship Model Conference and Exhibit aboard the Queen Mary in Long Beach. This starts the next day.

And speaking of the Nautical Research Guild, our Maritime Museum has agreed to host their national conference here in 1999. More, much more, on this later. Curator BOB CRAWFORD will be the "head honcho" for the museum for this event. Let's plan on giving him all the support we can .

IT'S DUES TIME AGAIN:

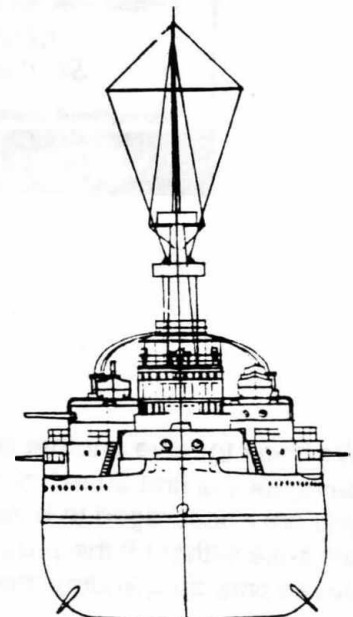
Our Purser, ED WHITE, will be happy to take your check at our next meeting. If you miss the meeting, please mail your \$15 check to:

ED WHITE

/redacted/

By mailing your check early, we guarantee you miss a single issue of our newsletters in 1996.

WDT



USS Connecticut

BB-18

● **THE 19th ANNUAL** ●
**IMS MODEL SPORT
& HOBBY SHOW**

BIGGEST & BEST in the WEST!

Trade Only: Friday, 9am - 1pm

PASADENA CENTER

300 East Green Street, Pasadena, California

JANUARY 19, 20, 21, 1996

Friday: 1pm-7pm, Saturday: 10am-6pm, Sunday: 10am-5pm

***Win an R/C System (1st) or
Trophies (2nd & 3rd) with your
Static Display Models!***

FREE Model Airplane Building Lessons!

LARGE INDOOR CAR TRACK

R/C PLANES • CARS • BOATS

• HELICOPTERS • ROCKETS • TRAINS

FOR SHOW INFORMATION, PHONE 702-896-2162, Fax 702-897-7775

SWAP SHOP- For Info, contact IMS office.

LIVE R/C DEMOS • RAFFLE

Admission: \$7.00 • Children ages 5 & under FREE when with an adult.

ADVANCE ADMISSION TICKETS: \$6.00

Send check or M.O. and S.A.S.E. by 12/22/95

International Modeler Shows, Inc., P.O. Box 50729, Henderson, NV 89016-0729

"Say NO to Drugs, YES to Model Hobbies!"

*Thanks, Maritime Modelers!
for this info.*

We hope to have another outstanding show. There will be free passes, good for all three days, for the first 20 exhibitors. If one of your boats has won a first at this show in the past, you are encouraged to bring it, but it will not be eligible for a prize. This is a good rule, because without it the prizes might go to the same boat year after year. Let's face it, we have some outstanding models. Contact Bob Morgan soon, to ensure your free pass.

WHO DOES THE 1996 NEWSLETTERS & WHEN:

Jan.	Fred Fraas
Febr.	Gordon Jones
Mar.	" "
Apr.	Fred Fraas
May	" "
June	Gordon Jones
July	" "
Aug.	Fred Fraas
Sept.	" "
Oct.	Gordon Jones
Nov.	" "
Dec.	Fred Fraas



Your editors are firm believers in sharing the wealth (or sharing the burden.) The schedule above is listed herein for advance planning. Should you wish to submit an article, tip, hint, gripe, suggestions, idea etc. we would more than welcome your input. If necessary, we'll even do the typing. Send your info to the designated editor for the month you choose to:

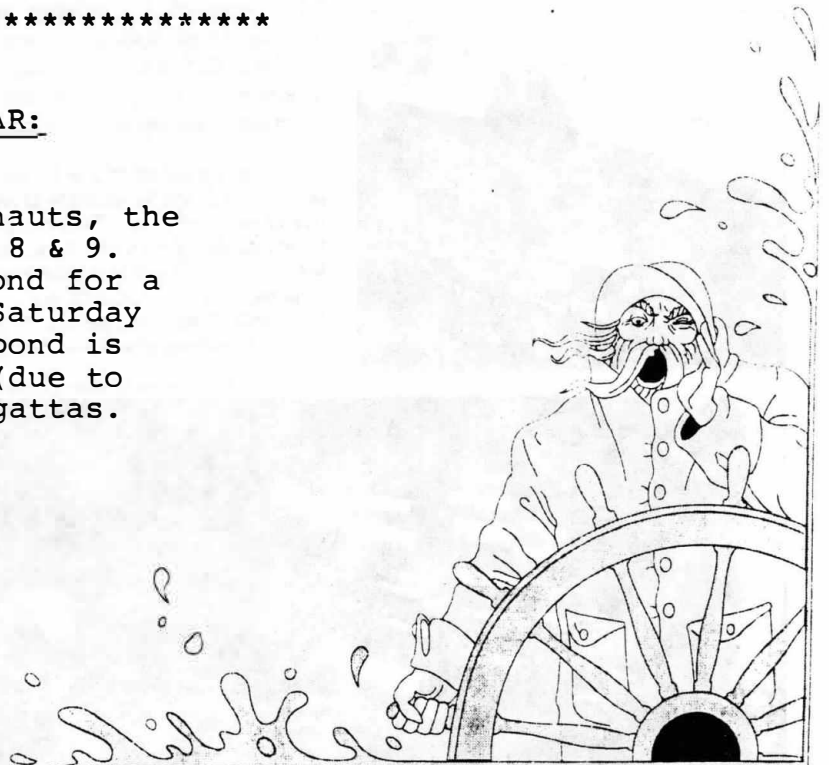
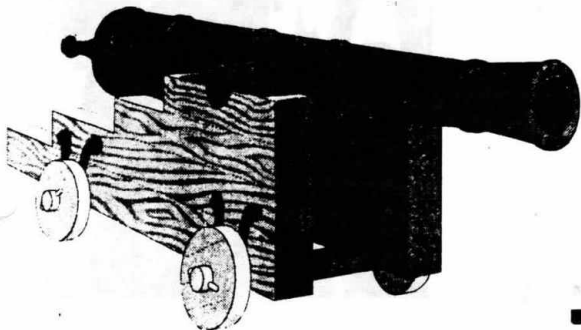
Fred Fraas
/redacted/

Gordon Jones
/redacted/

NOTE: If we switch or swap a month due to vacations, trips etc, your input will be forwarded to the co-editor agreeing to do that month's newsletter.

1996 MODEL YACHT POND CALENDAR:

Thanks to the San Diego Argonauts, the pond sked is listed on pages 8 & 9. See GORDON HOUVENER at the pond for a "billfold size" sked of the Saturday morning dates for which the pond is closed to all open running. (due to sail, power, or our SDSMG regattas.



Saving Time in a Bottle

by Anne Johnson

Donald Pearson once asked Alan Villiers, the sailor and author of many fine books on deepwater sailing, what was the best way to keep up the tradition of modelmaking. Alan Villiers' reply was this directive: study the ship well, know every detail—how she worked, how she was constructed, and then make the model to the best of your ability.

Good advice, and a demanding standard for every modelmaker. But to the ship-in-a-bottle modeller working under the limitations of space—masts collapsed, everything must fit through the small mouth of a glass bottle—it is a true challenge.

Don Pearson, who is now working on his model number 210, has developed numerous techniques and tools of his own to create the kind of authenticity Villiers spoke of. Near the work area in his shop in Deephaven, Minnesota, looking much like a jeweller's bench, lie precise rows of hundreds of small tools at the ready, and surrounding shelves carry glass bottles custom made in Colorado and neat stacks of wood drying for future models; hardwoods such as holly and apple for the hull, boxwood and lemon for the spars. Sails are made of various papers ranging from water-marked rag bond to thin rice paper.

Donald's chief inspiration for modelmaking was his seafaring grandfather,

Erick Michael Johnson, a retired sea captain with seven trips around the Horn, two on the bark *Parma* of the famous P Line. This old salt knew how to keep a young boy's hands busy during the summer months when Donald visited his East Hampton, Connecticut, farm. He started Donald on ship models, carving, fancy ropework and net making while telling him sea stories. Donald made his first ship-in-a-bottle at age eleven.

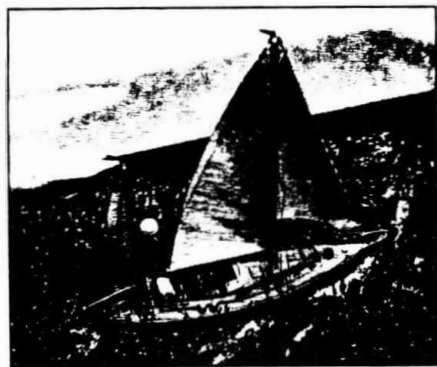
In later years, Don sailed to Nova Scotia with his grandfather in an old yawl and also raced Internationals and Lightnings on Long Island Sound. All this added to his first-hand knowledge of ships and the sea. As a reflection of this, Donald's current project is a model of the 60-ft *Duracell*, a gift for Mike Plant, a Deephaven neighbor who is solo sailing the sloop in the Globe Challenge representing the United States.

A further inspiration to Don is the late marine artist Gordon Grant. Donald came to know him as an artist and friend and acknowledges that some of Grant's techniques may be seen in his own work.

Although modelmaking is still a hobby for Don, it might turn into a full time business due to the demand. His current backlog is almost one year and growing! Asked why he chose ship-in-bottle modelling rather than regular ship modelling, Donald replied that to him, "it's more of a challenge and more unusual. Most modelling clubs I've been in have had no other ship-in-bottle modellers." On a practical note he adds, "and they take up less space!" □

At left, at a scale of .072"=1", this model of the 46.5-ft ketch Moonbeam is representative of many of Don's commissions. Below, Don's model of the Cutty Sark, displayed at Miniature Marine, his Deephaven store. Constructed at a scale of .029"=1", it required 231 yards of material and has 267 points that had to be pulled, glued and cut off.

PHOTO BY HARLAND'S CAMERA GRAPHICS.



A college student needed a small two-hour course to fill out his schedule. The only one that fit was in Wildlife Zoology. After one week the professor gave the class a test. He passed out a sheet of paper divided into squares.

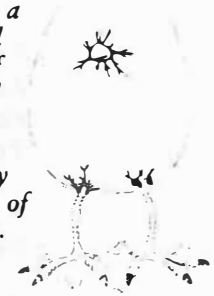
In each square was a carefully drawn picture of some bird legs. No bodies, no feet, just legs.


The test asked them to identify the birds from their legs.

The student sat and stared at the test and got more and more angry. Finally he stomped up to the front of the classroom and threw the test on the teacher's desk. "This is the worst test I have ever taken."

The teacher looked up. "Young man, you have just flunked this test. What is your name?"


The student pulled up his pants to show the professor his legs. "You tell me." -- Illustrations Unlimited

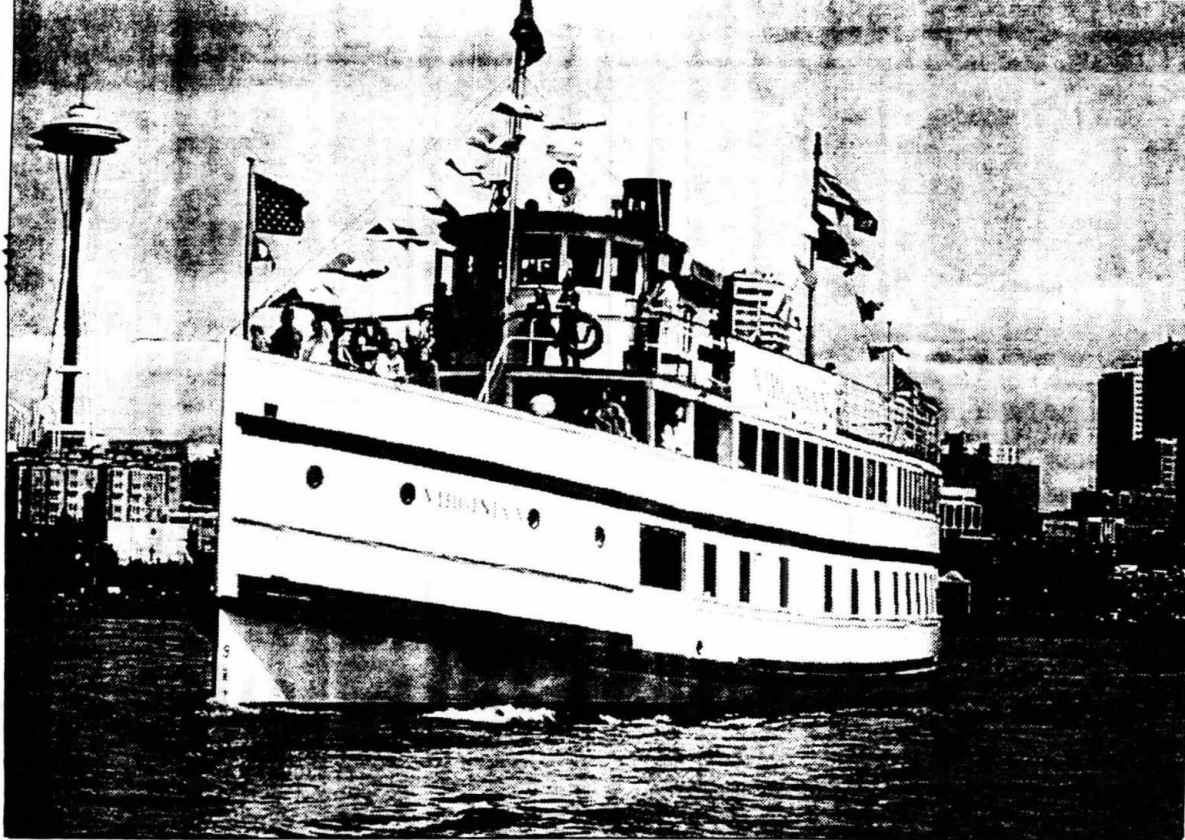




**SAN DIEGO
MARITIME MUSEUM**
1306 North Harbor Drive
San Diego, CA 92101

"You won't want to miss the exciting new programs at the Maritime Museum. And don't forget to bring a friend!"
—The Ancient Mariner





The Virginia V cruises through Elliott Bay. The familiar steam whistle of the last of the old Mosquito Fleet will be stilled if money isn't raised to repair serious rot that threatens its license.

Rot may end long career of the steamer Virginia V

By **DON CARTER**
P-I REPORTER

When the historic Virginia V chugs by this month, be sure to wave at the glittery Christmas-lighted ship.

Wave goodbye, perhaps forever.

The steamship is scheduled to lose its Coast Guard certification to carry paying passengers Feb. 17, and Virginia V Foundation officials say that means end of the line for the 73-year-old vessel.

Without paying passengers, the foundation won't have money for normal maintenance, and the docked vessel will be easy prey for a wooden ship's worst enemy, rot.

Rot in the skeletal framework above the waterline is the source of the ship's current woes.

The foundation is \$400,000 short of the half-million it needs for repairs.

For the 20 years it's owned the ship, the foundation has been waging kind of a Perils of Pauline battle with rot and a lack of money.

Over the years, the foundation has raised and spent about \$900,000 for repairs to the hull planking, stern and bow.

"We've never been able to do a

major overhaul all at once," said Karen Laverdiere, the foundation's executive director. "All of the work has been piecemeal, because we've never been able to raise the money."

So if \$400,000 is raised to keep the boat operating for another year, it won't mean the end of troubles. The work the boat needs to keep operating for the next 20 to 25 years would cost about \$2 million, Laverdiere said.

The ship, last survivor of the Mosquito Fleet of steam ships that provided service to Puget Sound's shores the pre-auto era, last year carried about 20,000 paying passengers on 120 cruises.

The charter business provides enough for basic salaries, operating expenses, and routine maintenance, said Connie Nobles, the foundation's operations manager. But charters don't pay enough for extraordinary repairs, such as the critical framework replacement.

Because of uncertainty about the ship's future, the foundation has stopped booking reservations for cruises next year.

"We tell people we'll take their names, but we can't make any guarantees," Nobles said.

The uncertainty, she said, "is

kind of like we're going into the Twilight Zone."

Nobles worries twilight will come sooner for the classy old ship if it is permanently docked, unused, and left with no source of revenue for even minimal maintenance.

Rain seeping through the deck, rather than seawater, is what caused the rot, she said. Rain-damage repair to the deck and superstructure is among the ship's principal future needs.

Despite the looming problems, the ship has a busy holiday schedule.

Sunday, from 3:30 to 5:30 p.m., the ship will participate in the annual Seafair-sponsored Special People's Holiday Cruise. The cruise, supported by AT&T, annually takes about 2,500 developmentally disabled people on cruises aboard Christmas-lighted ships. The Virginia V has been part of the parade since 1968.

Two of four holiday cruises already are sold out.

Space remains available on Dec. 6 and 27 cruises.

For information about cruises: 624-9119. Contributions may be sent to the foundation at 901 Fairview Ave. N., Suite 110, Seattle 98109.

B12 Seattle Post-Intelligencer • Friday, December 1, 1995 •

This article for →

(THANK GORDY!)

1996

Model Yacht Pond Calendar

January

S	M	T	W	T	F	S
	1	2	3	4	5	6
7	8	9	10	11	12	13
14	15	16	17	18	19	20
21	22	23	24	25	26	27
28	29	30	31			

February

S	M	T	W	T	F	S
				1	2	3
4	5	6	7	8	9	10
11	12	13	14	15	16	17
18	19	20	21	22	23	24
25	26	27	28	29		

March

S	M	T	W	T	F	S
					1	2
3	4	5	6	7	8	9
10	11	12	13	14	15	16
17	18	19	20	21	22	23
24	25	26	27	28	29	30
31						

April

S	M	T	W	T	F	S
	1	2	3	4	5	6
7	8	9	10	11	12	13
14	15	16	17	18	19	20
21	22	23	24	25	26	27
28	29	30				

May

S	M	T	W	T	F	S
			1	2	3	4
5	6	7	8	9	10	11
12	13	14	15	16	17	18
19	20	21	22	23	24	25
26	27	28	29	30	31	

June

S	M	T	W	T	F	S
						1
2	3	4	5	6	7	8
9	10	11	12	13	14	15
16	17	18	19	20	21	22
23	24	25	26	27	28	29
30						

January

- 1 *New Year's Day*
- 2 12:00pm Schooners
- 6 Guild AM/ Sail PM
- 7 Power AM Sail Points PM
- 13 Guild AM/ Sail PM
- 14 Power Practice
- 20 Guild AM/ Sail PM
- 21 Power Practice
- 27 Guild AM/ Sail PM
- 28 Power Points

February

- 3 Guild AM/ Sail PM
- 4 Power AM/ Sail Points PM
- 6 12:00pm Schooners
- 10 Mid Winter Sail Regatta
- 6:00pm Awards Banquet
- 11 Mid Winter Sail Regatta
- 14 *Valentine's Day*
- 17 Guild AM/ Sail PM
- 18 Power Practice
- 24 Guild AM/ Sail PM
- 25 Power Points

March

- 2 Guild AM/ Sail PM
- 3 Power AM/ Sail Points PM
- 5 12:00pm Schooners
- 9 Guild AM/ Sail PM
- 10 Power Practice
- 16 Guild AM/Sail PM
- 17 Power Practice
- 20 *Spring begins*
- 23 Guild AM/Sail PM
- 24 Power Practice
- 30 Guild AM/ Sail PM
- 31 Power Points

April

- 2 12:00pm Schooners
- 6 Guild AM/ Sail PM
- 7 *Daylight Savings--set ahead 1 hour*

April

- 7 Power Practice
- Easter*
- 13 Guild AM/ Sail PM
- 14 Power AM/ Sail Points PM
- 20 Spring Sail Regatta
- 21 Spring Sail Regatta
- 27 Guild AM/ Sail PM
- 28 Power Points

May

- 4 Guild AM/ Sail PM
- 5 Power AM/ Sail Points PM
- 7 12:00pm Schooners
- 11 Guild AM/ Sail PM
- 12 Power Practice
- Mother's Day*
- 18 Guild AM/ Sail PM
- 19 Power Points
- 24 Dist O/B Set up
- 25 Dist 19 O/B Race
- 26 Dist 19 O/B Race
- 27 SCSTA Scale Hydro Race
- Memorial Day (Observed)*

June

- 1 Guild AM/ Sail PM
- 2 Power AM/ Sail Points PM
- 4 12:00pm Schooners
- 8 Guild AM/ Sail PM
- 9 Power Practice
- 14 SD Ship Modelers Set up
- 15 SD Ship Modelers Regatta
- 16 SD Ship Modelers Regatta
- Father's Day*
- 20 *Summer begins*
- 22 Guild AM/ Sail PM
- 23 Power Practice
- 29 Guild AM/ Sail PM
- 30 Power Points

July

- 2 12:00pm Schooners

July

S	M	T	W	T	F	S
	1	2	3	4	5	6
7	8	9	10	11	12	13
14	15	16	17	18	19	20
21	22	23	24	25	26	27
28	29	30	31			

August

S	M	T	W	T	F	S
				1	2	3
4	5	6	7	8	9	10
11	12	13	14	15	16	17
18	19	20	21	22	23	24
25	26	27	28	29	30	31

September

S	M	T	W	T	F	S
1	2	3	4	5	6	7
8	9	10	11	12	13	14
15	16	17	18	19	20	21
22	23	24	25	26	27	28
29	30					

October

S	M	T	W	T	F	S
		1	2	3	4	5
6	7	8	9	10	11	12
13	14	15	16	17	18	19
20	21	22	23	24	25	26
27	28	29	30	31		

November

S	M	T	W	T	F	S
					1	2
3	4	5	6	7	8	9
10	11	12	13	14	15	16
17	18	19	20	21	22	23
24	25	26	27	28	29	30

December

S	M	T	W	T	F	S
1	2	3	4	5	6	7
8	9	10	11	12	13	14
15	16	17	18	19	20	21
22	23	24	25	26	27	28
29	30	31				

1996 Model Yacht Pond Calendar

January

S	M	T	W	T	F	S
	1	2	3	4	5	6
7	8	9	10	11	12	13
14	15	16	17	18	19	20
21	22	23	24	25	26	27
28	29	30	31			

February

S	M	T	W	T	F	S
				1	2	3
4	5	6	7	8	9	10
11	12	13	14	15	16	17
18	19	20	21	22	23	24
25	26	27	28	29		

March

S	M	T	W	T	F	S
					1	2
3	4	5	6	7	8	9
10	11	12	13	14	15	16
17	18	19	20	21	22	23
24	25	26	27	28	29	30
31						

April

S	M	T	W	T	F	S
	1	2	3	4	5	6
7	8	9	10	11	12	13
14	15	16	17	18	19	20
21	22	23	24	25	26	27
28	29	30				

May

S	M	T	W	T	F	S
			1	2	3	4
5	6	7	8	9	10	11
12	13	14	15	16	17	18
19	20	21	22	23	24	25
26	27	28	29	30	31	

June

S	M	T	W	T	F	S
						1
2	3	4	5	6	7	8
9	10	11	12	13	14	15
16	17	18	19	20	21	22
23	24	25	26	27	28	29
30						

July

4 *Independence Day*
 6 Guild AM/ Sail PM
 7 Power AM/ Sail Points PM
 13 Summer Sail Regatta
 14 Summer Sail Regatta
 20 Guild AM/ Sail PM
 21 Power Practice
 27 Guild AM/ Sail PM
 28 Power Points

August

3 Guild AM/ Sail PM
 4 Power AM/ Sail Points PM
 6 12:00pm Schooners
 10 Guild AM/ Sail PM
 11 Power Practice
 17 Mid Summer Sail Regatta
 18 Mid Summer Sail Regatta
 24 Guild AM/ Sail PM
 25 Power Points
 30 Dist 19 Heat Racing Setup
 31 Dist 19 Heat Racing

September

1 Dist 19 Heat Racing
 2 SCSTA Scale Hydro Racing
Labor Day
 3 12:00pm Schooners
 7 Guild AM/ Sail PM
 8 Sail Points and Picnic
 14 SCSTA Muncey Hydro Race
 15 Muncey Unlimited Hydros
 21 Guild AM/ Sail PM
 22 Power Practice
Autumn begins
 28 Guild AM/ Sail PM
 29 Power Points

October

1 12:00pm Schooners
 5 Guild AM/ Sail PM
 6 Power AM/ Sail Points PM

October

12 Fall Sail Regatta
 13 Fall Sail Regatta
 19 Guild AM/ Sail PM
 20 Power Practice
 26 Guild AM/ Sail PM
 27 Power Points
Daylight Savings--set back 1 hour
 31 *Halloween*

November

2 Guild AM/ Sail PM
 3 Power AM/ Sail Points PM
 5 12:00pm Schooners
 9 Guild AM/ Sail PM
 10 Power Practice
 11 *Veterans Day*
 16 Guild AM/ Sail PM
 17 Power Practice
 23 Guild AM/ Sail PM
 24 Power Points
 28 *Thanksgiving*

December

1 Power AM/ Sail Points PM
 3 12:00pm Schooners
 6 SCRS Sail Practice
 7 SCRS Winter Regatta
 8 SCRS Winter Regatta
 14 Guild AM/ Sail PM
 15 Power Practice
 21 Guild AM/ Sail PM
Winter begins
 22 Power Practice
 25 *Christmas*
 28 Guild AM/ Sail PM
 29 Power Points

July

S	M	T	W	T	F	S
	1	2	3	4	5	6
7	8	9	10	11	12	13
14	15	16	17	18	19	20
21	22	23	24	25	26	27
28	29	30	31			

August

S	M	T	W	T	F	S
				1	2	3
4	5	6	7	8	9	10
11	12	13	14	15	16	17
18	19	20	21	22	23	24
25	26	27	28	29	30	31

September

S	M	T	W	T	F	S
	1	2	3	4	5	6
7	8	9	10	11	12	13
14	15	16	17	18	19	20
21	22	23	24	25	26	27
28	29	30				

October

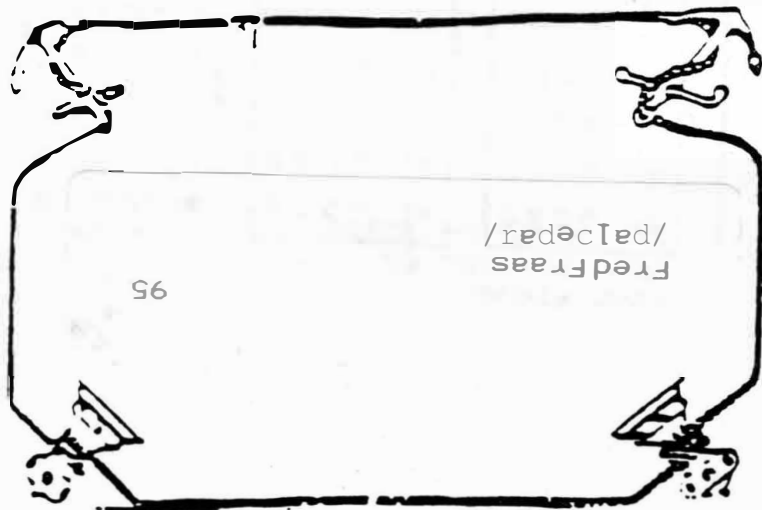
S	M	T	W	T	F	S
		1	2	3	4	5
6	7	8	9	10	11	12
13	14	15	16	17	18	19
20	21	22	23	24	25	26
27	28	29	30	31		

November

S	M	T	W	T	F	S
					1	2
3	4	5	6	7	8	9
10	11	12	13	14	15	16
17	18	19	20	21	22	23
24	25	26	27	28	29	30

December

S	M	T	W	T	F	S
	1	2	3	4	5	6
7	8	9	10	11	12	13
14	15	16	17	18	19	20
21	22	23	24	25	26	27
28	29	30	31			



San Diego Ship Modelers Guild
 C/O Maritime Museum Assoc. of SDiego
 306 North Harbor Drive
 an Diego, California 92101

San Diego Ship Modelers Guild

Officers for 1995

Guild Master
 First Mate
 Purser
 Logkeeper
 Newsletter Editors

Jim Hawkins /redacted/
 Doug McFarland
 Ed White /redacted/
 (open)
 Fred Fraas /redacted/
 Gordon Jones /redacted/

Steering Committee

--Open to any and all interested in the welfare of the club.

Regatta Commodore

Dave Manley /redacted/

Schedule of Activities:

Membership:

Meetings -- Third Thursday of the month. 7:00PM Social, 7:30PM Meeting, held on board the ferryboat "Berkeley."

Dues are \$15 annually (\$7.50 after July 1st)

R/C Operations -- Saturday mornings at the Model Yacht Pond. (Mission Bay)

We strongly encourage all to join the San Diego Maritime Museum as an expression of appreciation for the facilities they provide for our benefit.

Annual Regatta -- Third weekend in June.
