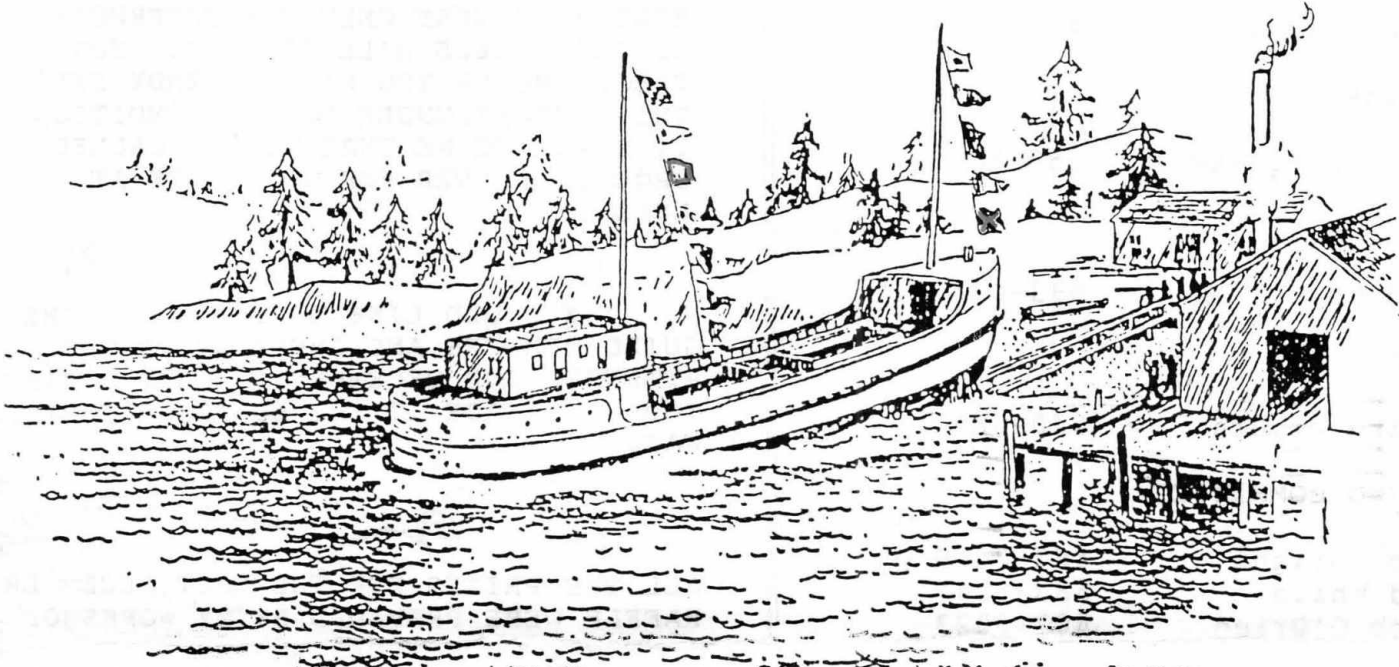




# San Diego Ship Modelers' Guild

January 1993 # 1 Vol. 17



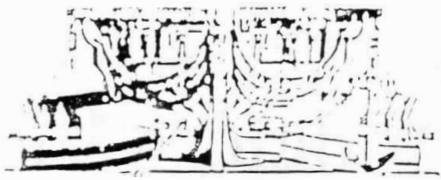
"Here comes 1993"



## January 1993

- 2 Saturday SDSMG AM/SAIL PM
- 7 Sunday SAIL POINTS AM/PM
- 9 Saturday SDSMG AM/SAIL PM
- 10 Sunday POWER AM/PM
- 16 Saturday SDSMG AM/SAIL PM
- 17 Sunday POWER AM/PM
- 21 Thursday 7:00 PM SDSMG MEETING
- 23 Saturday SDSMG AM/SAIL PM
- 24 Sunday POWER AM/PM
- 30 Saturday SDSMG AM/SAIL PM
- 31 Sunday POWER AM/PM





1993

- ER
- Bob Crawford /redacted/
- FIRST OFFICER
- Bob Wright /redacted/
- LOG KEEPER
- Walter Briese /redacted/
- TREASURER
- Ed White /redacted/
- EDITOR
- Mike Rivera /redacted/
- STEERING COMMITTEE
- Bob Wright /redacted/
- Ed White
- Bob O'Brien

SCHEDULE OF ACTIVITIES

Guild Meeting Third Thursday of the Month

- 7:00 PM Social
- 7:30 PM Meeting

STATIC WORKSHOP

First & Third Tuesday 7:00 PM to 9:00 PM aboard the Ferry Berkeley.

R/C OPERATION

Saturday Mornings Model Yacht Pond

ANNUAL REGATTA

Third Weekend in June.

MEMBERSHIP

Due are \$15.00 Annually

WE STRONGLY ENCOURAGE ALL TO JOIN THE SAN DIEGO MARITIME MUSEUM AS AN EXPRESSION OF APPRECIATION FOR THE FACILITIES THEY PROVIDE US.

SOMETHING TOLD ME THAT 1993 WAS GOING TO BE A LITTLE DIFERENT, IF YOU HAVE LOOKED OUTSIDE YOUR WINDOW LATELY THAT WET NOISY SOUND THAT MOST OF US THOUGHT WE NEVER HEAR AGAIN IS CALLED WATER,RAIN,H2O,OR YOU MAY SAY A MOST UNUSUAL UPSIDE DOWN MODEL BOAT POND WERE ONLY THE UPPERWORKS OF THE MODELS WILL GET WET. BUT THEN SOME OF YOU HAVE ALREADY EXPIRIENCE THIS BEFORE,UNDER NORMAL CONDITIONS. IT SEEMS TO ME THAT OUR SO CALLED DROUGHT IS OVER FOR THIS WEEK AT LEAST.

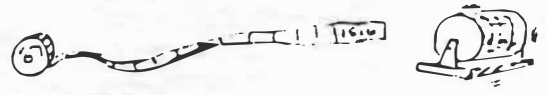
I WOULD LIKE TO THANK ALL THE GUILD MEMBERS AND THEIR WIVES WHO ATTENDED OUR DECEMBER CHRISTMAS PARTY YOU GUYS MADE IT THE SUCCESS IT REALLY WAS.

ALL THE PRIZES FOR THE LAST DECEMBER RAFFLE WERE PROVIDED BY "MY WORKSHOP" A UNDERGROUND MODELING AND CRAFT SHOP THAT SPECIALIZES IN SOUTHWEST WOOD AND LEATHER ART AND ALL AROUND MODELING .VICTORIA RIVERA OWNER.

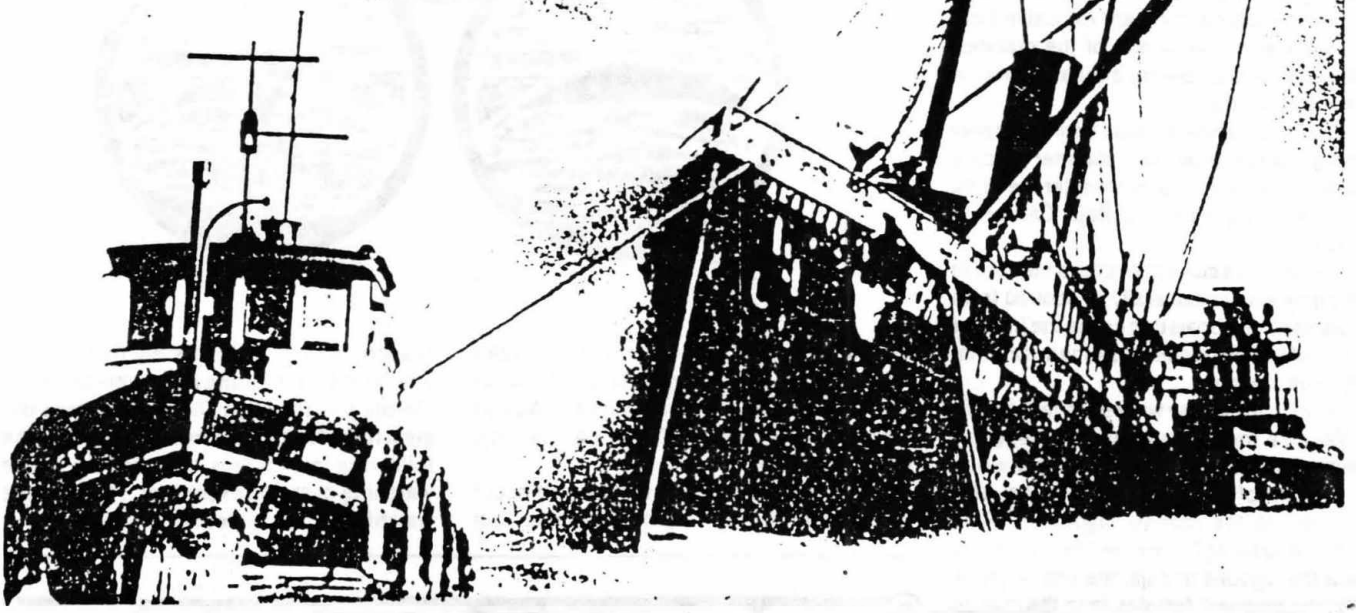
THE PROSSEDS FROM THE RAFFLE WERE DONATED TO THE GUILD.

WHALE WATCHING SEASON IS IN FULL SWING DON'T LET THE WEATHER KEEP YOU FROM EXPERIENCING THIS GREAT ADVENTURE . READ ON:

HAVING SAID THAT, NOW FOR THE SOMBER NEWS;THE TIME HAS COME FOR THE WORST CHORE OF MY LONG STANDING MEMBERSHIP ONBOARD THE SAN DIEGO SHIP MODELERS GUILD AFTER A LONG SOUL SEARCHING AND LONG NIGHTS DISCUSSIONS WITH ALL THE MEMBERS IN MY FAMILY, THE DECISION HAS BEEN MADE AND THE DIE HAS BEEN CAST AND I WILL SUBMIT TO YOU MY REQUEST FOR YOUR ANNUAL MEMBERSHIP DUES.... PLEASE MAIL YOUR DUES TO:



THE JANUARY MEETING WILL BE OUR GUILD  
OFFICERS ELECTION MEETING, PLEASE  
TRY TO ATTEND . BRING A MODEL BRING  
A MODEL BRING A MODEL



With the Seattle fireboat ALKI hugging her and the tug DELLWOOD towing her to open water, the fine old Alaska Steamship Company passenger liner ALAMEDA, speed queen of the fleet, burns furiously after catching fire at Pier 2, Seattle, Nov. 28, 1931. The fire broke out in the early morning hours and gained headway so rapidly that it was necessary to tow her from pierside to prevent a major waterfront fire. The liner was beached near the East Waterway and burned for many hours. Last serving as master of the ship was Captain C. A Glasscock. The vessel was never rebuilt and her hull was scrapped a few years later by Neider & Marcus of Seattle. The ALAMEDA was built at Philadelphia in 1883 and was of 3,158 tons.

ED WHITE  
/redacted/

THIS CAN ALSO BE TAKING CARE OF  
AT THE NEXT GUILD MEETING ON JAN.  
21, 1993 AT 7 :00 PM.

name.....date.....  
address.....  
city.....state.....zip.....

modeling preference, static periot,  
static modern, r/c, military, civilian,  
pleasure , sail, steam, scratch,  
kit, wood, metal, or fiberglass,  
other.....

## Visitors Can Reserve Front Row Seats To Nature's Grandest Spectacle

There aren't too many people who can say they've enjoyed ringside seats to such events as a Super Bowl, a World Series, a Broadway Show opening night, or a top film premiere.

But if you happen to be visiting San Diego County this month, there are exclusive front row seats available to one of the grandest spectacles of nature—the annual migration of the gray whale.

From now thru March, these enormous gray whales journey from their summer feeding grounds in the Arctic to their winter breeding grounds along Mexico's Baja California Peninsula.

Since they are a coastal species, a number of these gray whales can easily be spotted from whale watching boats that cruise the inshore waters off San Diego county during this annual migration season.

Each year, these gray whales undertake this 12,000 mile round-trip excursion along the Aleutian Islands past British Columbia, along the coasts of Washington, Oregon and California to the shallow lagoons of Baja California. Starting December, the first whales reach the lagoons of Baja, the first to arrive being the pregnant females, then the mature breeding adults and finally the yearlings.

Many areas along the San Diego county coastline are ideally situated to give whale watchers an inspiring and memorable opportunity to spot at least a few of the more than 15,000 whales as they rise to the surface to breathe while revealing enormous heads dotted with barnacles and splashed with dashes of orange whale lice.

When not wary, the whales exhale their breath forcefully creating spouts that are visible from great distances. Usually the whales repeat this action several times before lifting their broad tail flukes—measuring 10 to 12 feet across and weighing 300 to 400 pounds—above the surface and diving quietly beneath the waves.

On occasion, whale watchers have enjoyed the dramatic spectacle of a whale "breaching" or leaping almost clear of the water before crashing back into the water creating a gigantic splash and an explosively loud "slapping" sound.

Whale Watching season runs thru mid-March. Call each company for specific dates.



Fortunate viewers can also witness whales "spynopping" or picking their heads out of the water, or even see the display of boisterous courting complete with rolling, shoving, splashing or bumping.

Births have actually been known to occur off the San Diego County coastline. Last

season, whale watchers sighted several newborn calves during their excursions.

While you're in San Diego, don't miss this great natural wonder! Visitors can contact the following companies to schedule whale watching or sailing excursions. Plan a whale watching excursion today!



## WHALE Watching Expedition

Cruise in comfort aboard the 151-foot historic schooner Invader on a high seas whale watching adventure off the coast of San Diego. Whale watching expedition includes:

- 3 1/2 hour Invader cruise
- Comfortable inside seating
- Hot food and complete bar available
- Informative narration on whales and migration
- Entertaining video documentary
- Views of other sealife too!

### Cruise Schedule

Daily at 9 am. & 1:30 pm.

**(619) 234-8687**

Ship's Location, 1066 N. Harbor Dr. on the Embarcadero. Next to the Cruise Ship Terminal.

## WHALE WATCHING

### 2 FOR 1

When you mention *Inn Room Ad* while making reservation.

Departs at 10 a.m. & 1 p.m.



CALL NOW

(619) 222-1164

1551 West Mission Bay Dr.

## DEEP SEA FISHING

¾-day surface/rockcod.

Depart 7 a.m., return 4 p.m.

Mention *Inn Room Ad* when making reservation for \$3 off ticket price.

## GUARANTEED SIGHTINGS!

Naturalist  
Narration  
Professional  
Crews  
Full Galley  
Service

**Whale Watching** is an exciting voyage into the ocean realm of the California Gray Whale.

**H&M Landing** has more than 25 years experience and is the only company approved by San Diego schools.

Schedules:

### 3 Hour Cruises

Daily Departures: 10am & 1:30pm

### 5 Hour Cruises

Thursday - Sunday: 10am-3pm

# H&M Landing

In Point Loma on San Diego Bay

(619)222-1144

## ▼ WHALEWATCHING & SAILING ▼

### Apollo

When a charter boat is named after a Greek god which symbolizes music, poetry, pastoral pursuits and prophecy, visitors can only expect a relaxing, memorable and mesmerizing whale watching excursion!

The 65-foot comfortable Apollo charter boat offers a full walk-around for optimum viewing and a cozy coast guard certified sundeck. Plus, there is a limited passenger load to enhance the comfort of the excursion.

The Apollo features a full galley of lunch and snacks with beer and wine available. Visitors are also guaranteed sighting or ride again free.

Whale watching excursions aboard the Apollo are three hours long and run 10 a.m. and 1 p.m. daily. Departures are from Fisherman's Landing at 2838 Garrison St., at Scott. Tickets are \$15 for adults and \$10 for seniors, juniors and the military.

Come aboard for a memorable whale watching trip! Call Apollo for more details at (619) 221-8500.

### H & M Landing

At H & M Landing a whale watching excursion is a "voyage of discovery!" This pioneer in West Coast whale watching excursions will operate a full schedule of daily and weekly sea-going cruises to view the migration of the California Gray Whale now through March.

And, all trips are guaranteed to sight whales. In fact, if for some reason whales are not sighted on your trip, H & M will take you out again free!

Three-hour trips operate daily, departing at 10 a.m. and 1:30 p.m. Longer 5-hour trips provide a full day of marine adventure. And for the very adventurous, H & M Landing offers overnight and week-long whale watching and nature trips to the coastal waters of Baja.

H & M Landing's fleet of full service power vessels will take you to sea and back in complete safety and comfort. Shipboard accommodations include comfortable lounges and full galley service.

While many boats operating from San Diego Bay carry as many as 120 to 300 passengers per trip, H & M limits the passenger maximums to provide the optimum opportunity for all aboard to view the whales.

H & M Landing is located at 2803 Emerson St., in Point Loma near Shelter Island. For whale watching information and reservations, call (619) 222-1144.

Book a voyage of discovery today!

### Invader Cruises

Here's your chance to experience the mesmerizing migration of the California Gray whale on board one of San Diego's largest and most comfortable whale watching ships—the historic Schooner Invader.

Visitors can enjoy an informative video about whales along with live interesting narration by trained captains, who use a "whale gentle" approach to viewing the whales and other sea life. Narration includes information about San Diego Bay, ocean tides and currents, whale migration, interesting whale facts, info on San Diego's spectacular sea life and more!

Whale watching cruises, which last about 3.5 hours, includes complete snack bar including hot dogs, chops, pizzas, burritos and adult drinks too!

Departures are 9 a.m. and 1:30 p.m. daily now thru mid-March at 1066 North Harbor Dr., near the downtown Cruise Ship Terminal. Close to public transportation and ample parking. (619) 231-8687.

Don't miss a chance for a fun and relaxing getaway on various other cruises offered by Invaders such as a one-hour narrated Harbor Tour or a complete Dinner-Dance Cruise.

### Islandia Sportfishing

The closest departure point to the Southern Migrating Gray Whale is Islandia Sportfishing in Mission Bay. Visitors who take a whale watching excursion with Islandia can spend more time with the whales!

If visitors are looking for a safe, smooth and enjoyable boat ride to and from the whale migration paths, then Islandia can offer the perfect whale watching boat—the 85-foot, Coast Guard certified and immaculately clean motor vessel, the Dolphin.

Islandia Whale Watching excursions also guarantees: low prices (☛ *Two ride for the price of one when you mention this Inn Room magazine ad.*); free parking which is available in the Hyatt/Islandia lots.

Upon sighting, visitors will receive their very own free Whale Watchers Certificate!



Interested in sportfishing? Visitors can catch more than fish when riding aboard the Phoenix out of Islandia Sportfishing. You can catch a beautiful San Diego dose of sun and fun!

The Phoenix features full galley service, bunk accommodations and modern electronics for safe navigation and fish location. Her fully licensed crew is one of the most experienced in Southern California and is eager to assist you.

The 60-foot Phoenix departs Islandia daily at 7 a.m. and returns at 4 p.m. Summer months offer a variety of some of the world's most famous gamefish. Winter months offer deep water fishing for Pacific Red Snapper.

Islandia Sportfishing is located at 1551 W. Mission Bay Dr. ☎ (619) 222-1164.

### Mariposa Sailing Cruises

What better way can visitors spend their vacation in San Diego than by having a close encounter with one of the most fascinating creatures in the world—the playful and agile California Gray Whale!

Come on down and enjoy a highly educational and entertaining adventure tracking the migration of the gray whales with Mariposa's Captain Roger Anderson.

Anderson, a coast guard licensed captain and a Pasis certified sailing instructor, is well versed in San Diego's Maritime History and sea life as well as local attractions and Naval lore.

From a quiet sailing vessel, visitors can experience a close-up view of the California Gray Whale while Captain Anderson details the captivating lifecycle, habits and ecology of these magnificent animals!

Visitors can relax on board the 35-foot "Mariposa" or even sail the vessel themselves during these whale watching excursions!

The Mariposa, which carries a maximum of six passengers for the whale watching cruises, is a comfortable ocean cruising vessel with an elegant teak interior, a spacious cockpit and all the amenities.

Morning cruises are from 8:30 a.m. to 12:30 p.m. daily and afternoon cruises are from 1 p.m. to 5 p.m. daily. Cost includes beverages and snacks. Lunch is also available.

Captain Anderson guarantees friendly personalized service and the best of sailing on every trip. Mariposa Sailing Cruises is located at the Sheraton Harbor Island East. For more information, call ☎ (619) 542-0646.

### Nautical Adventures Bay Cruises

History comes alive in the San Diego Bay as visitors can hop aboard a classic luxury yacht at Nautical Adventures and capture the treasures of warmth, elegance and charm on a nostalgic bay cruise.

Visitors can step back to a time during an era of high seas adventures and treasure hunts, aboard the classic "Olympic Scout." This comfortable, historic 75-foot motor yacht is elegantly decorated with beautiful Honduras mahogany interior, teak decks and all the amenities once enjoyed by passengers in that time and era of exotic sea adventures.

"Nostalgic adventures awaits you on the beautiful San Diego Bay," says Captain Walt Purio of Nautical Adventures, who invites visitors to join him and his crew to experience the warmth, elegance and charm of a gentler America.

Captain Walt is coast guard licensed and is very familiar with San Diego's naval history and maritime wisdom, as well as local attractions. Guests can enjoy the many sights that San Diego has to offer, as well as take the wheel of this classic yacht under the watchful eye of the Captain.

Cruises are daily departing at 11 a.m. and returning at 2 p.m. Sunset cruises depart at 5 p.m. and return at 8 p.m. Beverages and hors d'oeuvres are included. Lunch is also available.

Captain Walt and crew welcome visitors to enjoy the subtle opulence and quiet elegance of a bygone era and will strive to make each cruise a memorable one.

Nautical Adventures Inc. is located on Harbor Island, at Cabrillo Isle Marina. Private charters for up to 20 people are also available. Don't forget to stop by Nantsea's Nautical Boutique and bring home a souvenir from your adventure. Call today for more details. ☎ (619) 293-3400.

## WHALE WATCHING

*Experience a Close-up View of the Magnificent California Grey Whale!*

4-HOUR NARRATED TRIPS

Morning Cruises: 8:30 a.m. - 12:30 p.m.

Afternoon Cruises: 1 p.m. - 5 p.m.

*Includes Beverages & Snacks  
Lunch Available*



CLASSIC SAILING ADVENTURES  
Private Charters Available

Located at:

Sheraton Harbor Island East

(619) 542-0646

## Nautical Adventures

Cruise beautiful.  
San Diego Bay aboard the  
classic 75' motor yacht  
"Olympic Scout"



▲ Day cruise departs at  
11:00 a.m., returns at 2 p.m.  
(includes soft drinks & snacks)

▲ Sunset cruise departs at  
5:00 p.m., returns at 8:00 p.m.  
(includes champagne & hors d'oeuvres)

Cabrillo Isle Marina  
Harbor Island  
San Diego, CA

(619) 293-3400

**WHALE WATCHING OFF POINT LOMA**  
Guaranteed sighting or ride again free.  
on board the 65ft  
**APOLLO**  
Limited passenger load.  
Full galley

\$15 Adults  
\$10 Seniors/  
Mrs./military

Leaving from  
**FISHERMAN'S LANDING**  
2838 Garrison St. at Scott St.

**221-8500**

San Diego Argonauts News Letter

Around the Club:

The club's election of officers was held at the pond club house on November 1, 1992. A ballot with a slate of officers had been mailed to the members. Those who had not mailed in their ballots voted at the meeting. There was one nomination for each office except that of Power Board Member. Cathie Galbraith was elected to that position. The new Officers and Board will assume their new duties on December 1, 1992. A joint new-old Board meeting is scheduled and all officers holders will be notified of time and place.

New Officers for 1992-93:

Commodore: Larry Knudsen

Vise Commodore Sail: Pete Jefferson

Vise Commodore Power: Mike Veta

Secretary: Larry Lyons

Treasurer: Bob Cornell

Director Sail: Rocky Gallo

Director Power: Cathie Galbraith

Director: Bill Bridge (Past Commodore)

The 1993 Pond Schedule is finalized and is included in the back of the Newsletter. Some changes were made to the schedule from the past years. They are to accommodate the Sail group due to time constraints, for daylight's savings time at the beginning and end of the year.

The Current Key List for the Clubhouse:

#1 Bill Bridge	#8 Bill Silvers
#2 Fred Wares	#9 Ira Cotton
#3 Dick Davis	#10 Don La Page
#4 Bob Cornell	#11 Chuck Long
#5 Bob DeBow	#12 Chuck McGaughy
#6 Mike Herculinsky	#13 Larry Knudsen
#7 Jim Hawkins	

Those of you that are intrested in obtaining a key you will need to contact your new Commodore.

## Radio Frequency Problems

Recently from attending a Model Association Meeting it has been confirmed that there will be a full time electric flying field just east of Sea World where the new Park will be built. The actual location is just about 100 yards east of the restrooms. The field is currently being used but, soon will be shut down for construction. This should take about six months. Flying will start again with the Cities blessings.

What this means to the Boating community is that the people using aircraft frequencies (there should be none of you) will have problems. Also the 27Hz band is a shared frequency so those of you using these frequencies be beware!!!

## Pond Permits: Why. When. How?

Until recently it has been somewhat confusing as to why and when a Parks Dept. permit for the use of the pond is required. The witer recently had occasion to discuss this question with Mike Behan, Manager of the Mission Bay Parks Division. Mr. Behan clarified the matter as follows:

1. A permit is needed for the use of the pond if:
  - A. number of participants exceeds 75.
  - B. We desire exclusive use of the pond, excluding non-participating boaters.

Unless the club has a permit for an event it cannot exclude non-participating boaters from the pond. Should such a boater be denied access to the pond during a scheduled event he/she could properly file a complaint with the Parks Department and/or the San Diego City Council. This has happened in the past. In one case the boater addressed the City Council and we were hard pressed to resist Mission Bay Lessee pressure to take the pond.

There are specific steps which must be followed in obtaining a pond permit. These are:

1. Make application at the Mission Bay Parks Headquarters. Coastal Division on Quivera Drive. The application will specify the nature of the event, date and time. If sound amplification (PA) will be used a Noise Abatement Permit is also needed before the Parks Permit can be issued. This must be obtained from the City Operations Building at 1222 First Ave.
2. An acknowledgement of the event must be obtained from the Princess Resort Hotel Management Office. NOTE: This lessee cannot deny the issuance of the acknowledgement. Any objections by them must be filed with the Parks Dept.
3. Any request for overnight parking at the pond for security purposes must be obtained and the identification of the parked vehicle must also be obtained. Such overnight parking will usually be limited to one or two vehicles. Unauthorized CN parkers are subject to citations by the police dept.