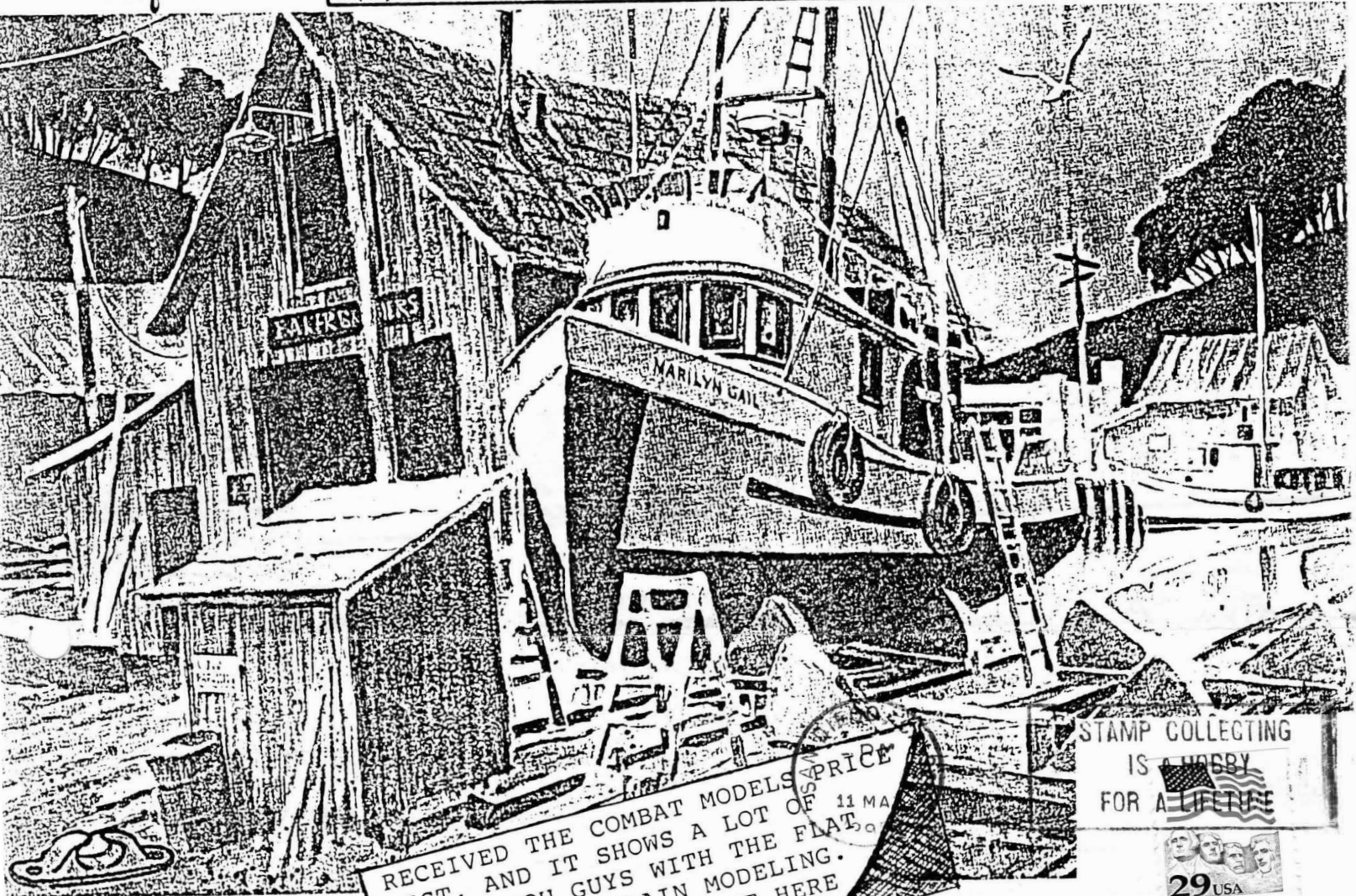


San Diego Ship Modelers' Guild

1306 N. Harbor Drive

San Diego, CA 92101

MAY Vol. 16 NO. 5 1992



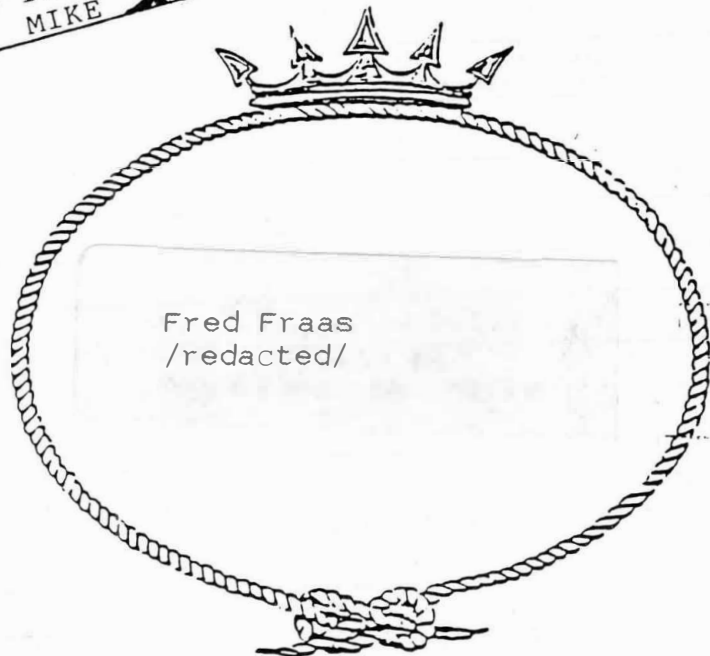
RECEIVED THE COMBAT MODELS PRICE LIST, AND IT SHOWS A LOT OF IDEAS, YOU GUYS WITH THE FLAT TOPS OR JUST PLAIN MODELING. TELL THEM YOU HEARD IT HERE MIKE

STAMP COLLECTING IS A HOBBY FOR A LIFETIME



May

S	M	T	W	T	F	S
					1	2
3	4	5	6	7	8	9
10	11	12	13	14	15	16
17	18	19	20	21	22	23
24	25	26	27	28	29	30
31						



May

- 2 GUILD AM/ SAIL PM/ PRACTICE
- 8 POLER AM/ SAIL POINTS PM
- 9 GUILD AM/ SAIL PM/ PRACTICE
- 10 POLER PRACTICE
- 16 GUILD AM/ SAIL PM/ PRACTICE
- 17 POLER PRACTICE
- 23 POLER REGATTA CIB
- 24 SCALE HYDRO RACES CIB
- 30 GUILD AM/ SAIL PM/ PRACTICE
- 31 POLER POINTS ALL DAY

SH

PRESIDENT
BOB CRAWFORD /redacted/



VICE-PRESIDENT
BOB WRIGHT /redacted/

TREASURER
ED WHITE /redacted/

EDITOR
MIKE RIVERA /redacted/

STEERING COMMITTEE
BOB WRIGHT /redacted/
ED WHITE /redacted/
JIM HAWKINS /redacted/
BOB O'BRIEN /redacted/

STATIC WORKSHOP- EVERY OTHER
TUESDAY 7:00 PM TO 9:00 PM ABOARD
THE FERRY BERKELEY.

R/C OPERATION- SATURDAY MORNINGS
MODEL YACHT POND

ANNUAL REGATTA- THIRD WEEKEND
IN JUNE.

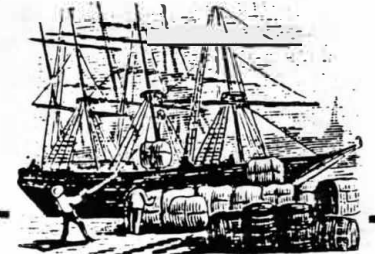
MEMBERSHIP:

DUES ARE \$15.00 ANNUALLY

WE STRONGLY ENCOURAGE ALL TO
JOIN SAN DIEGO MARITIME MUSEUM
AS AN EXPRESSION OF APPRECIATION
FOR THE FACILITIES THEY PROVIDE
US.

SCHEDULE OF ACTIVITIES

GUILD MEETING THIRD THURSDAY
OF THE MONTH
7:00 PM SOCIAL
7:30 PM MEETING



COMBAT MODELS

400 3rd STREET
WEST EASTON, PA. 18042

ORDER FORM

CHECK OR MONEY ORDER



_____ CREDIT CARD NO

EXPIRATION DATE MONTH YEAR

To
Address

Is this your first order. YES NO

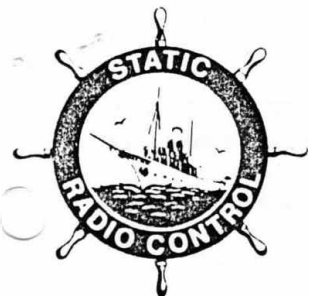
X _____ AUTHORIZED SIGNATURE OF CARD HOLDER

MasterCharge & Visa add 5%

QUANTITY ORDERED	KIT NO.	PLEASE SUPPLY ITEMS LISTED BELOW	PRICE	UNIT
1				
2				
3				
4				
5				

SHIPPING INSTRUCTIONS:

U.S. orders to continental states shipped UPS. RATES; Orders to \$25.00 add \$4.50, \$25.00 to \$55.00 add \$5.50, \$55.00 and up add \$7.50. CANADA shipped parcel post add 40% for rates, plus \$1.50 insurance. OVERSEAS; Surface rate add 45%, for air mail add 65% plus \$1.50 insurance. U.S. FUNDS ONLY. All checks must clear our bank before shipment. Allow at least 4 weeks delivery. Money orders and charge order filled first. All charge orders must add 4% to total of order. PENNA residents must add 6% sales tax. Include a stamp or 2 IRC's if a reply is requested. ALL SALES ARE FINAL.



San Diego Ship Modelers' Guild

1306 N. Harbor Drive

San Diego, CA 92101

April 8, 1992

Dear Guild Member,

I thought that I might take some of your time to bring each of you up to speed on the goings on of our guild. In no particular order, here is what has been happening behind the scenes and a few other things you should know of.

At the last meeting I circulated two lists for volunteers. One concerned the model shop aboard the BERKELEY, where we need members who could spend one saturday a month manning the shop, talking to visitors, and promoting the Modelers Guild. If you would be interested, please contact me at work (/redacted/) or at my home (/redacted/) for additional information. The other list was for members who could be contacted in the event of there being some special activity or promotion (America's Cup Village, special news feature article, etc.) come up between meetings or newsletters where we could contact members to attend at short notice. If you would be interested, please contact me at the above numbers, see me after the next meeting or drop by the model shop.

Due to ill health, Vic Crosby and his wife have returned to the Seattle area where his family resides. Doug McFarland moved that the Guild recognized all of the contributions Vic has made in behalf of and to the San Diego Ship Modelers Guild over last 15 years, by obtaining and appropriately engraving a ships clock. The motion was unanimously approved. We will miss Vic, his humor and his marvelous ships in bottles.

We are rapidly approaching the June regatta and the Del Mar Fair and many things come immediately to my mind, but the 2 most important items are:

1. Dan LePage could use as much help on this event as possible. Please contact Dan at (/redacted/) to see how you might help between now and June 20. Dan has gotten an excellent response from various manufacturers and suppliers to his request for donations for awards.

2. The Del Mar Fair and our annual regatta always begin on the same weekend (in the early days I believe the regatta was held in September, until the Thunder Boat races interferred). After this years regatta, let's explore the possibility of moving the date of our event so as to be in the position to more fully participate in the Fair. Pat Edwards, the superintendent of the "Design in Wood" division, would be very interested in our manning a booth or holding a sailing exhibition. Lets look into this further after the regatta. Interest has also been expressed in having boat clubs use an improved Del Mar Race Track infield pond on a regular basis. If the recommended improvements are made to that facility, it could be very worth while for all of the R/C boat types.

It was suggested in a recent steering committee meeting that the Guild sponsor and subsidize some kind of club outing. We will be contacting the Harbor Excursion group sales for costs of an evening excursion and dinner on the bay. Also being considers and explored is the possibility of a bus trip to San Pedro to tour the

S.S. LANE VICTORY and/or the Los Angeles Maritime Museum. If you have any ideas for such an outing let us know soon, as summer is rapidly approaching.

The San Diego County Association of Model Clubs have asked us to become members of and participate in their organization. Basically a political action group promoting the Radio Control Hobbies, boats, cars, and aircraft, this group publishes a guide for new residents and other interested parties to find clubs meeting their needs. Membership will cost us \$30.00 year. If you have any feelings towards this group one way or another, please give me a call or come to the next steering committee meeting. I believe it could get us some added community exposure, and also keep us informed of any happenings that we should be aware.

I would like to remind our members that the model shop aboard the BERKELEY has a great many resources available to them, such as the Guild tool library, with a variety of saws, lathes, and other such tools. We have attempted to keep a complete set of all of the major ship modeling magazines, such as "Ships in Scale", "Scale Ship Model Builder, and "The Nautical Research Journal" in our shop library. You are welcome to come in and read though any of the articles you need and on week days we can photo copy anything you need, but I would appreciate their not leaving the ship as it is getting very difficult to replace missing copies. We have an excellent collection of current catalogs, somewhere around 100, in our library. If you are having trouble finding something or are simply curious about whats available to us from the many different supplier, come have a look. There is also a complete set of Guild newsletters. Come on it and use the many resources available to make your modeling easier.

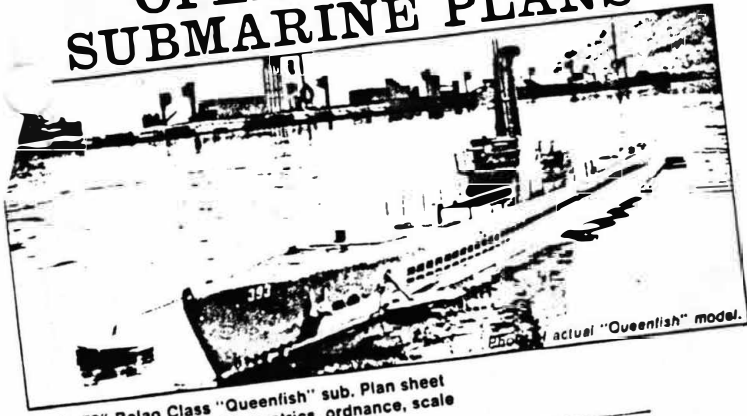
The America's Cup Museum on the "B" Street pier is scheduled to close at the end of May, although there is a move afoot to ask the Port District to allow it to stay open through the summer months. The exhibit is well worth the \$3.00 general admission price. There are models, all in the same scale and by the same builder, of every challenger and defender through out the history of the cup as well as many photographs and other artifacts from the America's Cup racing. Also, if you have not already seen the San Diego Museum of Arts exhibition from the Greenwich Maritime Museum "The Great Age of Sail, it is a must see attraction running through October 12, 1992. We have a special night set aside, Thursday, July 2, at 5:30. The Curator of Education, Barney Malesky will lead a tour of the exhibits paintings and I will do what I can with the objects and models. The cost will be \$3.00, includes hors d'oeuvres and wine and is restricted to Guild and Art Museum members only. Due to restricted space, no guest please. More information will be available in next months news letter.

Finally, don't forget guys, in an organization like ours, you get out of it what you put in. We need you, your ideas and your in put to make this club what we all want it to be. I hope all is well with you all and hope to see you aboard the BERKELEY at the next meeting, with (or with out) a model.

Sincerely,

Bob Crawford
1992 Guild Master

OPERATIONAL SUBMARINE PLANS



Exact-scale 72" Balao Class "Queenfish" sub. Plan sheet measures 41 x 74", with detailed isometrics, ordnance, scale detailing, etc.—\$19.95 (postpaid)

Gato Class submarine. 57" length. Plans only show superficial details.—\$9.95 (postpaid)

Professional video tapes of these subs in action. Great for club meetings or home viewing. Write for details.

California residents add 6% sales tax.

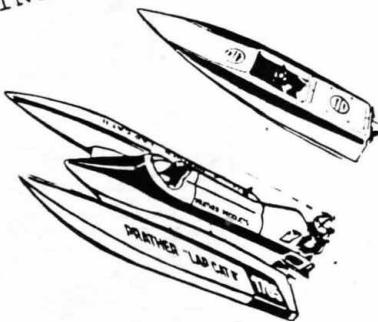
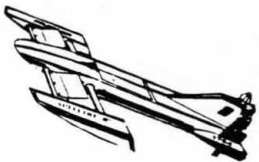
WORLD VIDEO **WO** PRODUCTIONS

RECENTLY I RECEIVED A CALL FROM AN OLD FRIEND FROM WHICH HADN'T HEARD FROM IN A LONG, LONG TIME; ROMAN HAS BEEN AROUND SINCE THE EARLY SEVENTIES AND HAS COLLECTED MANY MODELS THAT WE SOLD OR TRADED TO FINANCE OUR MODELING HOBBY AS IT GREW FROM THE 60'S, 70'S AND WELL INTO THE 80'S. GUY'S THIS IS A COLLECTION OF SUBMARINES, TUG BOATS, FISHING BOATS, AIRCRAFT CARRIER, STEAM ENGINE WITH A BOILER, ETC.



ATTENTION ARGONAUTS
AN ADDED NOTE:

ROMAN TELL'S ME THAT HE ALSO HAS LOTS OF POWER BOAT FITTINGS, GAS MOTORS, COOLING JACKETS RUDDERS ETC.



I'LL NAME SOME OF THE MODELS AND THEIR BUILDER WHEN EVER POSSIBLE--I PAID ROMAN A QUICK VISIT ON SATURDAY, AND THE MODELS DON'T SHOW THE 10 TO 20 YEAR'S, THAT THEY HAVE BEEN LOCKED UP.....

- A.) TYPE 7 SUB 6FT. LONG
- B.) BALAO SUB R/C WOOD BY ALBERT L'HEREUX
- C.) T-2 TYPE SUB. (BRITISH KIT) WITH R/C
- D.) BEAVER TYPE SUB (BRITISH KIT) WITH R/C (3FT. LONG)
- E.) P.T. BOAT WITH AN O & R GAS MOTOR (4FT. LONG)
- F.) USS RANGER A/C CARRIER PLANK ON FRAME 5FT. LONG
- G.) D.L.G. DESTROYER PLANK ON FRAME BY GORDON HOEVNER 5FT. LONG R/C
- H.) PRINCE EUGEN CRUISER BY ALBERT L'HEREUX 5FT. LONG R/C
- I.) RUBEN E. LEE SIDE WHEELER BY ALBERT L'HEREUX ELECTRIC R/C
- J.) BUGSIER TUG FROM KIT BY MIKE RIVERA ELECTRIC R/C
- K.) FISHING TRAWLER SCRATCH BY MIKE RIVERA ELECTRIC R/C
- L.) ASTER MARINE STEAM PLANT D TYPE VALVE ENGINE, BOILER WITH BURNER REVERSABLE-- SOME 20 YEARS OLD STILL IN BOX, NEVER USED.
SPEC.: 3 1/2"H X 5 1/8"L
2 1/2"W / 5/16" BORE
X 7/16" STROKE

ROMAN CAN BE REACHED AT THE FOLLOWING PHONE NO. /redacted/ BUS. OR /redacted/ HOME .

OUR 1992 REGATTA MAY WELL BE OUR SWAN SONG, IN THIS DAY AND AGE OF FINAL THIS AND FINAL THAT DUE TO MANY EXCUSES OUR LONG STANDING PREMIER REGATTA HAS ALSO COME TO ACLOSE DUE TO A LACK OF INTEREST AND HELP. THESE ARE THE VIEWS OF YOUR REGATTA COMMODORE DAN LEPAGE AND YOUR EDITOR MIKE RIVERA. SHOULD YOU HAVE ANY COMMENTS ON THE 1992 REGATTA AND ITS FUTURE, BRING THEM TO YOUR SAN DIEGO MODELERS GUILD MEETING ON MAY 21, THATS A THURSDAY AT 7:00PM ON BOARD THE FERRY BERKELEY.

FOR ALL THE REGATTA COMPETITORS: WE ENCOURAGE THAT YOU PRE-REGISTER BY MAIL AS THIS MAKES THE REGISTRATION EASIER.

THE REGATTA IS SCHEDULED TO START AT 8:00 AM SAT. JUNE 20TH, SO PLAN TO BE HERE EARLY.

THIS YEAR WE WILL NOT BE ABLE TO HAVE HOT DOG'S BUT WE ARE MAKING ARRANGEMENTS TO HAVE A LUNCH TRUCK NEARBY.

ANY QUESTIONS OR SUGGESTIONS PERTAINING TO THE REGATTA , PLEASE CONTACT DAN LEPAGE AT

redacted

IF YOU ARE LOOKING FOR MATERIALS TO START YOUR NEW PROJECT--- I'LL LET YOU IN ON A LITTLE SECRET: MIKES HOBBIES' ON MAIN STREET IN EL CAJON. THEY HAVE SUPPLIED ME WITH MOST OF MY SCRATCH BUILDING NEEDS FOR THE PAST SIX OR SEVEN YEARS EXCLUSIVELY--IF THEY DON'T HAVE IT--THEY ORDER IT. MIKE IS A BRITISH M.A.P. DRAWING APPROVED IMPORTER AND HE MAINTAINS A GOOD SUPPLY AT HAND, (A NEW BATCH JUST ARRIVED) SO STOP BY AND TAKE A BROWSE, MIKE'S STORE HAS BEEN AROUND FOR A LONG TIME--- AND MY RECOLLECTION TAKES ME BACK TO THE 60'S--WHEN I CAME TO SAN DIEGO WITH THE U.S. NAVY, I BELIEVE MIKE'S HOBBY IS THE LAST SURVIVING SINGLE OWN HOBBY STORE IN SAN DIEGO COUNTY... MIKE'S HOBBIES IS OPEN FIVE DAYS A WEEK TUESDAY THRU SATURDAY. CLOSED ON SUNDAYS AND MONDAYS.



RE/MAX

Golden Triangle Realty
Independently Owned and Operated

Art Turner
University City REALTOR

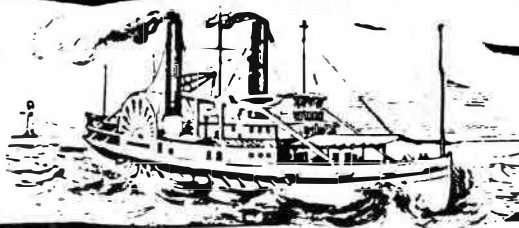
5080 Shoreham Place, Suite 204
San Diego, California 92122
Office: (619) 457-2140
Fax: 535-3967
Residence: (619) 452-0852

FOR SALE BY ART TURNER

SEMI-SCALE WOOD R/C MODEL
FFG2 USS RAMSEY. MOST PROBABLY
BUILT IN THE SEVENTIES BY AN
UNKNOWN BUILDER.

2 CHANNEL FUTABA
SPEED CONTROL
SINGLE SHAFT
APPROX. 36" LONG

THE MODEL HAS BEEN IN STORAGE
FOR A LONG TIME AND IT NEED'S
SOME VERY MINOR REPAIRS--
(REGLUING LIFE BOAT AND HELICOPTER,
AND SOME MINOR RIGGING WORK).
GIVE ART A CALL AT HOME
452-0852.



MARY & JANET
MICHALEWSKI

JEWELRY FINDINGS

MIKE'S MODEL & CRAFT

SELECTED MODEL AND CRAFT SUPPLIES
SINCE 1950

(619) 444-8297

229 E. MAIN ST.
EL CAJON, CA 92020



Quality Wood Kits

FOR THE DISCRIMINATING MODELER!



USCG 41' UTILITY

31.99

HOBBY SHACK STORE HOURS

MON.-FRI.
10:00-9:00

SATURDAY
10:00-6:00

SUNDAY
10:00-5:00

EL CAJON

469 BROADWAY
In the Pop Bays Center
(619) 444-6135

SAN DIEGO

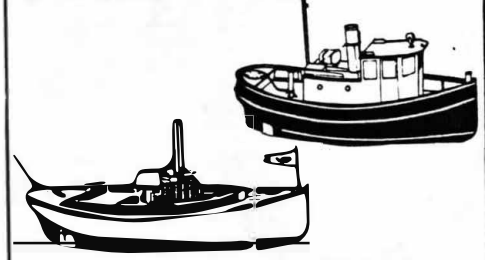
3860 CONVOY ST.
South of Balboa
(619) 268-7997

Futaba.

MIDWEST STEAM SERIES



PRODUCTS CO.



Kits feature Micro-Cut wood parts, full size plans, and Success Series construction manual.

FANTAIL LAUNCH II-L:19", B:7-3/4"
NO. 572693, LIST \$51.95 **33.99**

HARBOR MASTER-L:19", B:7-3/4"
NO. 572729, LIST \$69.95 **41.99**

Model IV Steam Engine
NO. 572719, LIST \$64.95 **41.99**

Running Hardware
NO. 572867 **9.99**

LINDBERG



R/C PLASTIC BOATS

Kits feature one piece molded hulls, detailed deck and structures, combination electronic speed control and special motor, brass prop shaft, nylon prop., rudder control rod and linkage, plus complete building and operating instructions (requires 2 channel radio). Length: 14 in.
DIESEL TUG BOAT NO. 300267
P.T.-109 NO. 300268
LIST \$60.00

Your Choice! **38.99**



2NCS ATTACK

With T2NCS transmitter, dry battery box, R102JE receiver with BEC, 2 S148 SMT (surface mount technology) servos, plus hardware. Available on 75 MHz only.

LIST \$89.95
42.95

LINDBERG

R/C PLASTIC BOAT KITS



43.99

Futaba.

2NBR ATTACK

With R102GR receiver, servo reversing, BEC (Battery Eliminator Circuit), and 2 each S148 SMT (Surface mount tech.) servos. J-type connectors. Available on 75 MHz only.

LIST \$114.95
53.95



AIRTRONICS

AVENGER 2S



The Avenger 2S, 2 channel, 2 stick R/C system is a state-of-the-art basic radio with futuristic styling that is perfect for the beginning car or boat enthusiast. System features an ergonomically designed transmitter, LED "On" indicator, 2 102 standard servos, a 2 channel AM receiver, hardware, and dry battery operation. Available on 27 and 75 MHz.

LIST \$89.95

41.95

dumas boats

CHRIS-CRAFT RUNABOUT



144.99

MIDWEST PRODUCTS CO.

R/C BOAT SERIES

Midwest's R/C boats are for the experienced modeler. These authentic workboats feature Micro-Cut parts, full size plans, fitting sets, and detailed instructions.

HARBOR TUG- L: 25", B: 7-1/4" **41.99**

FIREBOAT- L: 25", B: 7-1/4" NO. 572727, LIST \$94.95 **57.99**

Marine Electric Power System
NO. 573014, LIST \$104.98 **72.99**

Running Hardware- NO. 572875 **13.99**

SEGUIN- L: 39", B: 7-3/4" **105.99**

NO. 572685, LIST \$169.95 **26.99**

MEPS II Motor NO. 573020 **19.99**

MEPS II Speed Control NO. 573021 **22.99**

Running Hardware NO. 572891 **22.99**

MIDWEST PRODUCTS CO.

APPRENTICE SERIES



Midwest's Apprentice Series display boats are designed for the person with no prior building experience. Kits are complete with pre-cut parts, fitting sets, and the Success Series construction manual. Start out with a Skill Level 1 boat and then work your way up to a Skill Level 3 model.

SKIFF- L:8-5/8", B:3-1/8", Level 1
NO. 572739, LIST \$23.95 **15.99**

DINGHY- L:10", B:4", Level 2
NO. 572610, LIST \$23.95 **15.99**

MUSCONGUS BAY LOBSTER SMACK
L:15", B:3-1/2", Level 2
NO. 572628, LIST \$34.95 **21.99**

CHESAPEAKE BAY FLATTIE L:10-3/4", B:3-1/2"
Level 1, NO. 572737, LIST \$34.95 **21.99**

GRAND BANK DORY- L:15-1/2", B:4-13/16"
Level 1, NO. 572738, LIST \$39.95 **25.99**

CHESAPEAKE BAY CRABBING SKIFF
L:14-1/2", B:3-1/4", Level 1
NO. 572741, LIST \$39.95 **25.99**

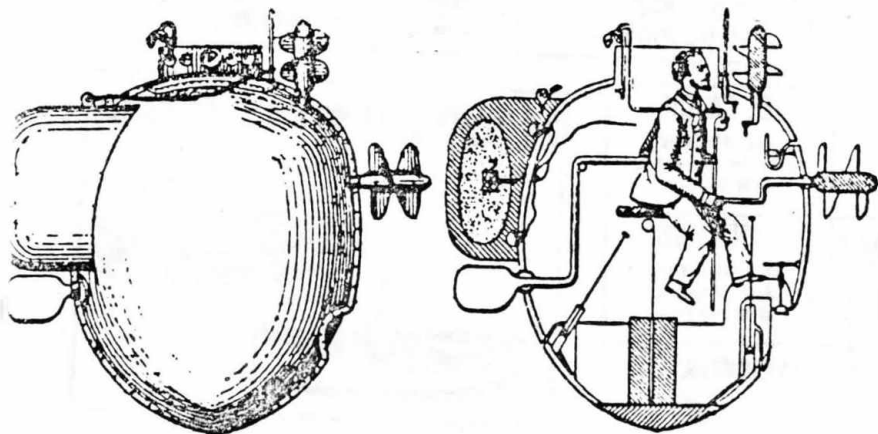
SHAERPIE SCHOONER- L:17", B:3-3/4", Level 2
NO. 572740, LIST \$57.95 **37.99**

CHESAPEAKE BAY SKIPIACK
L:21", B:4-1/2", Level 3
NO. 572742, LIST \$74.95 **46.99**

MAINE LOBSTERBOAT- L:24", B:7-5/8"
Level 3, NO. 572644, LIST \$79.95 **49.99**

S.F. BAY SCOW SCHOONER L:17", B:4-3/8"
Level 3, NO. 572743, LIST \$84.95 **54.99**

CAPE COD CATBOAT- L:13", B:5-1/4", Level 2
NO. 572744, LIST \$89.95 **57.99**



MARINE TURTLE (or *Maine Torpedo*)—amazing Revolutionary invention. Undersea boats went back to Jonah. But it remained for David Bushnell, genius of Saybrook, Conn., to create world's first combat submarine. "The famous Water Machine from Connecticut is every Day expected in Camp," Samuel Osgood wrote from Roxbury to John Adams. "I wish it might succeed and [enemy] ships be blown up." After work at Yale in 1774, Bushnell built one-man sub driven by hand-cranked "water screws." Clam-shaped hull was oak coated with tar. Water ballast was let in for submergence; vessel surfaced when ballast was pumped out. *Turtle* had 30-minutes air supply.

R E V O L U T I O N A R Y
S u b m a r i n e



WORLD'S FIRST SUBMARINE ATTACK—*Turtle* in action. New York Harbor. September night in '76. British had not yet seized Manhattan when Bushnell arrived with Water Machine to attack enemy fleet. Gen. Putnam's staff watching, *Turtle* set out from the Battery. Volunteer operator: Sgt. Ezra Lee of Lyme,

Conn., who drove sub down bay "by vigorous cranking." Reaching Howe's flagship *Eagle*, Lee tried to attach bomb to frigate's hull. He was unsuccessful, however; ship's copper bottom foiled his attempt. Enemy guards chased sub. But *Turtle* escaped. And bomb later exploded, scaring *Eagle* and her squadron galley-west. (below)

> **TORPEDO STRIKE!**—Bushnell scores. Bereft of *Turtle* but not of ideas, Bushnell devised "water bomb" to be drifted against frigate *Cerberus* blockading New London in '77. Guard schooner spied bomb, hauled it in—fatal catch! Bomb blew up schooner, sent *Cerberus* running seaward in panic, tail in legs. (above)

