



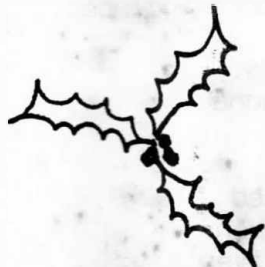
# San Diego Ship Modelers' Guild

P.O. BOX 6725, SAN DIEGO, CA. 92106

Volume 12

December 1987

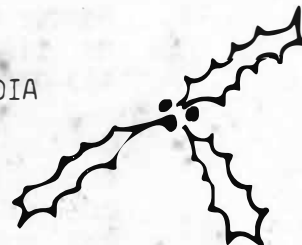
Number 12



## HOLIDAY PARTY

8:00 p.m. 'tween decks on the STAR OF INDIA

Bring a holiday munchie/goodie  
Spouses/friends welcomed



## MASTER'S MESSAGE

HAPPY HOLIDAYS TO ALL! I am sorry I will miss our party this month, but since the GERMUDA STAR will be at the cruise terminal until 10 pm, I will be there taking care of my flock.

Some of you may have noticed a few cryptic remarks from me at the train whistle nomination of me for another term. I can now clarify my reluctance to accept the nomination and in turn withdraw my name. Aurora has been notified that she has been admitted to Boston University beginning next Fall. We will be leaving San Diego for Boston late this Spring. In light of this, we will only be able to produce the newsletter until the March issue, after which we will need a new editor if the Guild is to continue having a newsletter. I will place a special emphasis in the remaining months of our time here to putting our records and files in order so someone besides me can find things.

There is great potential for our Guild, but it will take the work of some new leadership. Doug, Roy, and Fred cannot carry the load forever. This also means that if we are to host a conference next year, a few leaders will need to step forward to join the few who have already volunteered.

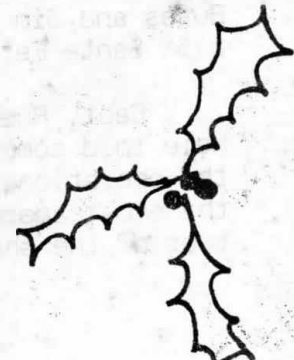
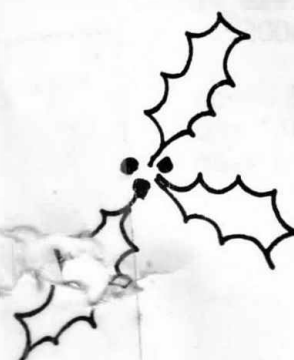
REMEMBER! GUILD MEMBERSHIP RENEWALS ARE NOW DUE!

## SHOW & TELL

by Nilson



WATER FRONT DELIVERIES, BAH HUMBUS!



#### LOG OF THE NOVEMBER 1987 MEETING

Guild Master Bill Kelly-Fleming called the 39 modelers and guests present for the meeting to order and read portions of a letter informing us of the passing of Bob Ellor in a motorcycle accident in Florida. Bill offered a prayer, and then proceeded with Guild business. Announcements included the following:

- o Member Michael Reidy could use a ride to our meetings. He lives at /redacted/ in Lakeside./ Phone redacted/ if you can help.
- o Gary Anderson, /redacted/, has a partially completed model for sale. A Baracuda hull of this 4' cabin cruiser purchased from Model Boat Yard has twin drive and ruddrs with new Astro 15 motors, gear drive, 3 bladed props, engine mounts, some pre-cut cabin superstructure, and plans but no fittings. None of the internal gear has been installed. Asking \$250.
- o Chollas Lake is available to run your boats. A special run was scheduled for December 5.
- o Several new books have been added to our library, notably titles by Davis and Underhill.

Bill revealed that in reviewing our archeives, it was discovered that the permission to meet at the Museum was conditioned on the Guild being a member of the Nautical Research Guild. Since this has not been done in at least the past eight years, it was voted to take out a membership and if possible obtain back issues of the Journal. Bill informed the membership that it appears there is new leadership for the NRG that is attempting to be responsive to the membership and that individual membership is once again encouraged.

An attempt to take nominations for various offices was met with a single nomination for Master only in an immitation of a railroad club.

#### PROBLEMS SESSION:

- \* How to make mast hoops... one idea is to cut brass tubing.
- \* Need pictures of the bridge of the HOUSTON in 1942.
- \* Al Berger is looking for additional plans, info, pictures, etc. for an ONTARIO tug since his kit was incomplete.

#### PRESENTATIONS

A sampling of steam engines being carried by a new local firm. Dave Buass and Jim Pratt have been at the pond and this meeting. Their address is 5151 Sante Fe, St. "A" in San Diego, 92109. Telephone 272-0327 or 270-4005.

Capt. Rueben Baker, a ship modeler and master of the ATLANTIS II of Woods Hole told some of the behind the scenes stories of the dive on the TITANIC and the operations of ALVIN, their submersible. Once the ATLANTIS II is back on the embarcadero after December 16, Guild Members are welcomed to stop by for a tour of the ship.



BY BILL KELLY-FLEMING

It's been rather quiet around the waterfront, as it usually is in November and early December. The first whales should be coming by soon and in January the cruise lines will show up again and that will pick things up. Of course for excitement there is the continuing question of America's Cup races off San Diego. Gregor Yapov popped his head into the model shop the other day saying something about secret research into a plan to combat the New Zealand challenge in the shallows of South Bay or the swamps of Florida.

The Museum is looking forward to having its new pier by June 1, 1988 (then again it is a Port project so no one is holding their breath you'll notice), and they are not looking forward to the rapidly approaching deadline to replace MEDEA's hull. Meanwhile they have announced that it is planned to sail the STAR again Memorial weekend of 1989. Hopefully all of you saw Bob's article in "Mainsail Haul" about the history of our Guild and the contributions of our members to the models of the Museum..

There have been several announcements of major ship model events around the country in the next year. Here is a summary.

- o February 26-28 - Portland, Oregon - annual competition and exhibit. Lloyd McCaffery will be the Saturday banquet speaker. Bed and breakfast accommodations are possible.

- o September, Ottawa Canada - International show sponsored by the National Museum of Science & Technology and Capital Marine Modelers Guild.

- o October 21-23 Baton Rouge, Louisiana - NRG meeting and show. Preliminary info indicates this will be a super conference.

MODELS AND/OR PARTICIPATION IN ALL ABOVE WELCOMED... SEE ME FOR MORE DETAILS

#### NAUTICAL RESEARCH GUILD UPDATE

Briefly, there have been several developments that indicate that the NRG is getting its house back in order. Once again we recommend joining this organization. A new constitution and by-laws will be sent to members for ratification in the near future. Two new directors will be needed, one of whom they would like to be from the West Coast. I have been in conversation with the other clubs on the west coast, and we are presently conferring on a nomination, for which we will be seeking signatures of current NRG members in the weeks ahead. If you are an NRG member, let yourself be known to Bill K-F. Anyone who is a member can place a nomination by petition with the signatures of twenty-five NRG members.

LATE BULLETIN: As this is going to press, our first three issues of the 1987 Journal have arrived. At the November meeting it was suggested that we as a Guild see if we can obtain back issues of the Journal. It so happens that there is a person seeking to sell his collection from 1971. I will be receiving further communication on this. This will mean an investment on the Guild's part. In the past it was suggested that the Guild take out subscriptions to the other three major model magazines. A vote on such an expenditure will be included in the ballot for officers. Additional donations to the Guild funds may be needed to accomplish this.

## CATALOGS UPDATED

All of our catalogs are now in binders in the shop, with the latest edition of most, to facilitate placing orders.

| <u>COMPANY</u>                       | <u>TYPE OF RESOURCES</u>  |
|--------------------------------------|---|
| A. J. Fisher                         | Manufacturer -- kits, fittings, plans   |
| Blue Jacket                          | Manufacturer -- kits, fittings, plans   |
| Brookstone                           | High class and hard to find tools   |
| Charleston Hobbies                   | Complete line of kits, esp. plastic   |
| Classics in the Making               | Kits for all types of things  |
| Coles Power Models                   | Manufacturer of engine kits   |
| Conway Press (1982)                  | Books   |
| Dockyard Models                      | Model shipways kits, tools for models, best source for linen rigging                |
| Dromedary                            | Distributor of everything--"one stop shopping"                                      |
| Dumas                                | Manufacturer of R/C kits  |
| Enco                                 | Large shop tools  |
| Floating Drydock                     | Everything for contemporary warships -- plans, fittings, photos, books, etc.        |
| Gold Medal Models                    | Loren Perry's photo etched fittings, decals, etc.                                   |
| Hartman                              | Plans and reference materials   |
| Hobby Shack                          | Local distributor--mostly R/C   |
| Jensen                               | Hand tools  |
| Leichueg                             | Wood tools  |
| Masterpieces in Miniature            | R/C kits  |
| Micro Mark                           | Fine tools--read and drool! Or better use in making birthday and Christmas lists    |
| Midwest                              | Laughing Whale kits and additional R/C  |
| Model Boats Engines & Plans Handbook | Lots of plans   |
| Model Expo                           | Major distributor with a store in Orange Co. Good stuff but slow when mail ordering |
| Model Shipways                       | Manufacturer of kits (static), plans, fittings                                      |
| Model Power                          | Kits--mostly European static sailing ships  |
| Naval Institute Press                | Books   |
| Northeastern Scale Models            | Scale lumber and half hull kits   |
| Prestons                             | Outlet for kits and nautical items  |
| Repla Tech                           | Wide selection of plans   |
| Saito                                | Steam engines, model kits   |
| Scale Shipyard/Warship Hulls Unltd.  | Lee Upshaw's infamous hulls, slow service   |
| Sirmar                               | Model ship fittings, primarily for warships   |
| Ship Model Shop                      | Limited warship kits and models   |

COMPANY

Smithsonian  
Taubman Plans

Trend Line  
Walthers (1982)  
Wood Carvers Store  
Web Model Fittings

Wood Crafting  
Valley Plaza Models

TYPE OF RESOURCES

Plans of American ships  
Widest collection of plans, books,  
info. If Abe doesn't have it, good  
luck!  
Tools  
Mostly model railroad  
Good wood tools  
Excellent, albeit limited, selection  
of fittings--mostly for larger scales  
Tools  
Distributer--uses Model Expo Catalog

\* \* \* \* \*

SHIP MODEL SHOP NEWS

WANTED -- Copies of any model magazines for our library files. Due to the announcement in "Master's Message" we are about to lose most of the collection that we have had on hand in the library. Especially we will need:

- SHIPS IN SCALE
- MODEL SHIP BUILDER
- SCALE SHIP MODELER

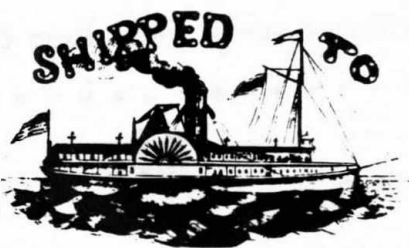
FINDING TIME TO WORK ON MODELS

The following was taken from an editor's column in a model airplane magazine, submitted by Bob Wright.

- o Set aside time each day to work at your bench. The length of the worktime is unimportant, the exact starting time is vitally important, be it 6:00 a.m., 7:00 a.m., 4:30 p.m., 8:00 p.m. or whatever. Whether you spend five minutes each day or five hours is nothing, the START TIME is everything. You may be forced to move your start time around to find its most effective place in your schedule but once found, don't move it.
- o No matter how you personally feel at the moment, sit down at your bench at the start time and cut and glue anything for five minutes and that is it. If you can do no more, then lay down your tools and proceed with your day's activities. What you are doing is moving the spirit instead of waiting for the spirit to move you.
- o Get into your subject mentally by reading books and articles about it. This is an old teacher's trick to get into what you are not up on.

AT THE MINIMUM OF FIVE MINUTES A DAY, YOU WILL GET OVER 2+ HOURS A MONTH DONE ON A FAVORITE MODEL AND BY THE END OF THE YEAR, THAT IS 30 HOURS OF WORK. (Why you might even surpass Doug's rate if you do that!)

SAN DIEGO SHIP MODELERS' GUILD  
Bill Kelly-Fleming, Logkeeper  
/redacted/



FRED V. FRAAS

/redacted/

SAN DIEGO SHIP MODELER'S GUILD  
OFFICERS FOR 1987

|                     |                      |                                  |
|---------------------|----------------------|----------------------------------|
| MASTER - LOGKEEPER  | Bill Kelly-Fleming   | /redacted/                       |
| MATE                | Doug McFarland       | /redacted/                       |
| PURSER              | Herman Boehme        | /redacted/                       |
| NEWSLETTER EDITOR   | Aurora Joan Selenian | /redacted/                       |
| STEERING COMMITTEE: | Al L'Heureux         | /redacted/ Fred Fraas /redacted/ |
|                     | Al Berger            | /redacted/ Roy Nilson /redacted/ |

SCHEDULE OF ACTIVITIES

MEETINGS: Third Friday STAR OF INDIA  
7:30 p.m. social, 8:00 meeting  
STATIC WORKSHOPS: Every other Tuesday  
7:00-9:00 p.m. BERKELEY  
R/C OPERATIONS: Saturday mornings  
MODEL YACHT POND  
ANNUAL REGATTA: Third weekend in June

MEMBERSHIP

Dues are \$10 yearly, \$5 after July  
We strongly encourage all to join  
the San Diego Maritime Museum in  
return for the facilities they  
provide for us.