



San Diego Ship Modelers' Guild

May 1982

NOTES ON THE APRIL MEETING

Our meetings of late have been chock full of ideas, tips, and announcements, April was no exception.

A.J. Neubauer announced the berth of a daughter, Sarah Rachel on February 24. Sarah was christened on Holy Saturday. Congratulations!

Bill Benson brought in Bill Brown's model of a Chesapeake Bay Shipjack. Bill reports that it is a good kit from Model Shipways and is simple to build. Bill also announced that a client is looking to lease a 2' to 4' long 542 class LST with operating bow doors, the model to be used for a film. After the meeting, Bill took us over to the shop on Berkeley to see a bone Prisoner of War Model which which he will be restoring.

A new type of plastic was brought in. When heated to over 200°F can be shaped, bent like felt, etc., and when cool will harden and can be sanded, drilled, machined, and generally worked like wood. It can also be thermoformed or vacuformed. Called FOAMEX, it costs about \$2.45 a square foot for the thickest, and comes as thin as .080". It does need sealing. It is made by Aluisse Metaloy Inc, 2100 Rt. 208, Fairlawn, NJ. 07410, phone (201) 791 3600. Locally it is distributed by Port Plastics at 8833 Complex Dr. and Hillcrest Hobby may carry it in the future.

Ships present at the April Meeting:

<u>Modeler</u>	<u>Model</u>	<u>Description</u>
Tom Hildebrand	HMS Victory Section	Modified kit 1:98
Bill Brown	Eden	Skipjack Oysterman Kit 3/8"=1' POF
Russell Scott	Walfagboot Rav IX	Whale catcher Graupner(German) kit 1:45

May Meeting

There have been several requests for a program on AIR BRUSHING! If you are one of those modelers making this request, then be sure to be at our May 21 Meeting. Bill Swift of Special Models in Coronado will be with us to demonstrate techniques in air brushing for models. Bill will also advise us on how to properly care for and use the air brush. This will be a meeting you won't want to miss!

LOGKEEPER'S LOG

We are trying to get caught up on submitted articles and information in this issue. I've been trying to organize information I've gathered this month instead of writing a Modeler of the Month feature - we'll return to that series next month. Meanwhile here's some odds 'n ends. We failed to note that last month's opening quote was from Herman Melville's Moby Dick.

For those of you who have been asking about Radio Control information, check out the current issue of SCALE SHIP MODELER (July '82) for the first in a series on R/C.

Bliss Marine has just released it's latest catalogue at \$2.00 a copy.

At the recent SCMA Boat Show, Cecil Gates of Sacramento had on display his 40:1 standoff replica of RMS TITANIC. It is part of a "Friendship Fleet" consisting of 3 gray battleships, an aircraft carrier, and a red white and blue battleship, the USS BICENTENNIAL. The fleet was part of the 1976 OPERATION SAIL in New York, and hopes to make a friendship tour in England and China this summer. I had a pleasant chat with Mrs. Gates at the show. I'll try to reproduce their flyer in this issue.

While at the show I inquired about the Guild getting a booth at a show to share our craft with the boating public.

28 of you completed membership forms this year which I actually read and tabulated. We have a fairly even spread of interests, and an overlap of interests, with a leaning toward R/C. It breaks down like this. Kit-20, Scratch-23, Solid hull- 8, Plank on Frame- 25, Static-19, Operating R/C-24, Sail-19, Power-12, Pleasure-7, Military-12, Commercial-11. Plus we had one write-in each for Steam, R/C Combat, and ships in bottles(any guesses who submitted the latter?). The 25 modelers who admitted how much experience they had, totaled 380 years of modeling experience. That means we've got a lot of experience to share with each other. I'll pass along program ideas to the steering committee.

TRAVELING THIS SUMMER?

Here are a few of the events of interest to ship modelers that I've discovered.

The tall ships will be in Philadelphia around June 21, then will be in Newport, RI, from June 24-27. About that same time Mystic Seaport is scheduled to have a Windjammer Weekend. If you're in those areas, you'll want to check those out. (Wish I could be there myself!)

The Valley Forge Model Ship Society will host a Model Regatta on June 13 at Gottwall's Pond on Hares Rd. in Kimberton, PA off Rt 113. Ernest Morris, the club secretary can provide more info if you are going to be in the area. Phone 215 948 8107, or write him at RD 3, Box 82, Spring City Rd., Phoenixville, PA 19460. Closer to home is the West Coast Scale Model Boat R/C Regatta, July 3-5, at Cupertino Memorial Park Cupertino, CA. This event is NAMBA Sanctioned and sponsored by the Bay Area Miniature Maritime Assoc., 1805 Matzley Dr. San Jose, CA 95124 or call 408 244 6267.

There will be a Wooden Boat Show Aug 19-22 at the Newport RI yachting Center.

THE JERRY MACMULLEN LIBRARY

In the summer of 1977, with the help of a \$5,000 donation from the Propeller Club on San Diego, a maritime library was started aboard the Berkely. Space was made on the port side, lower deck, just opposite the engine room casing. Shelving was installed, and books and magazines that had been stored 'tween decks on the STAR OF INDIA and in the "B" Street warehouse were brought in and placed on the shelves (Mains'l Haul, Sept. 1977).

The first meeting of the library committee, consisting of Gregg Chandler, Jerry MacMullen, and Robert Weinstein, was held aboard the BERKELEY on February 24, 1978. Captain Ed Fredericks USN (Ret) from the Navy League, along with Captain Bowman and Ken Reynard, was also present. The purpose of the meeting was to have Bob Weinstein, expert marine photo-historian and writer, give some valuable pointers on how to set up the photo section of the Museum library (Mains'l Haul, March 1978).

In 1979 an additional room was added aft of the original library space. Charts, photographs, and magazines are being sorted, cataloged, and indexed in this room. Donations of books kept pouring in and the two rooms were pretty well filled by the end of the year.

In 1980 the Kingsbury collection of passenger liner memorabilia was added to the library, which created the need for still another room. Magazines and collections were stowed in the new room. Exhibit cases were placed in the passageway outside the library to exhibit the collection, as well as other photos and memorabilia (Mains'l haul, July 1980).

Jerry MacMullen passed away in the spring of 1981, and a formal dedication and memorial service was held in the library on April 11, 1981. Henceforth, the library was to be known as the Jerry MacMullen Library.

BOOKS

The approximately 2,000 books in the Jerry MacMullen Library have been arranged in sections according to topic, with the exception of the Loan Section. The card catalog contains a title card for each book; an author card if the book has an author or editor listed on the title page; and a section card which tells where in the section the book may be found.

The Loan Section, Section A, includes a wide range of "readable" books, both fiction and nonfiction, all relating to maritime subjects. The books are shelved alphabetically according to author and are available to Museum members to check out for two weeks. Books in all other sections remain in the Library for research purposes, but any duplicates that would be of general interest are placed in the Loan Section.

Section B contains both books and pamphlets on the United States and foreign navies. These are arranged according to subject classifications, from general and specific naval histories, to naval biographies, ship recognition books, and technical manuals. We are fortunate to have volumes 1, 2, and 3 in Series II of the Official Records of the Union and Confederate Navies, as well as classic histories by Mahan and Maclay.

Volumes on sailing ships, boats, and yachts comprise Section C of the Library and are shelved alphabetically according to author. Most notable are books by Chatterton and

Chapelle and Fairburn's Encyclopedia of Merchant sail. Yacht club literature and books and articles pertaining to Captain Irving Johnson are on a separate shelf in Section C.

Spanning the eras of sailing and steam merchant ships, our complete run on the List of Merchant Vessels of the United States from 1885 to 1953 dominates Section D. The emphasis in this section, however, is on steam. The books are grouped according to topic with ship recognition books being most prominent. Volumes on passenger liners, riverboats, Pacific steamers, ferryboats, and merchant ship companies supplement the general ship histories.

Sections E,F,G, and H are primarily filled with books on more technical subjects. Navigation tables and texts comprise Section E, along with related topics of astronomy, meteorology, trigonometry, and ports and harbors. Of special interest is our collection of old Bowditch and other classic navigation texts. Section F contains books on how to run a ship, the main topics being seamanship, communications, ship's business, and stowage. Museum reference books are also in this section.

Engineering, naval architecture, and shipbuilding books, as well as more esoteric subjects classed as ship theory, are found in Section G. Section H contains books and pamphlets on ship modelling. It also shelters our catch-all collection, mostly books that are too fragile for the Loan Section, but which do not belong in any other section. Books that are deemed rare or valuable are either locked in the file cabinet or displayed on a locked shelf.

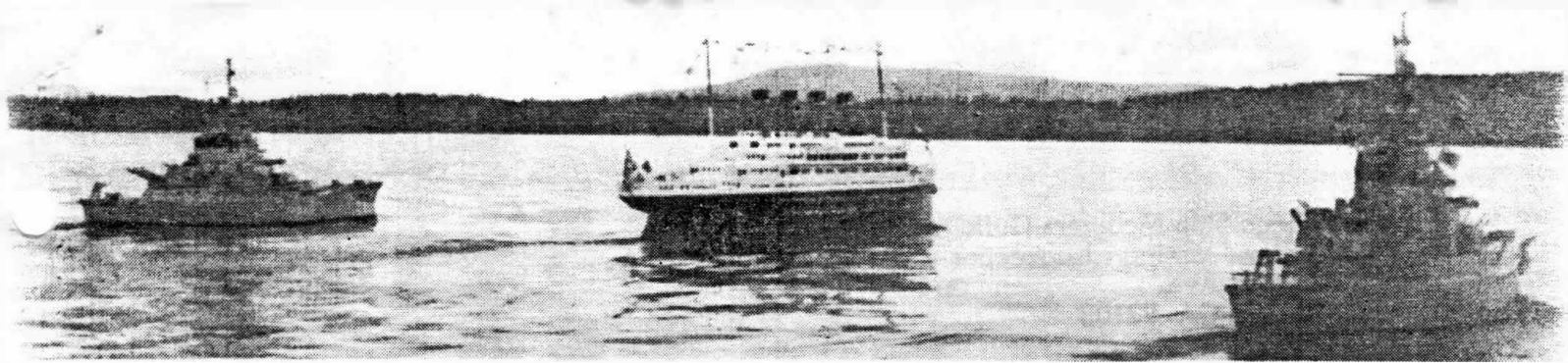
Clippings file

The Library has slowly been building up a clippings file. So far nearly 500 news articles have been mounted and classified according to topics ranging from sailing ships, passenger liners, and maritime museums, to the Navy, disasters and wrecks, and salvage operations.

Magazines

The newest addition to the Library is the Magazine Room. Currently the Library is receiving by subscription or donation the latest copies of twenty-eight different magazines, including Sea (1947 through 1981) and Yachting (1952 through 1981). We have a bound set of Naval Institute Proceedings covering the twenty years from 1884 to 1904, and our unbound copies are complete from 1959 through 1981. We also have bound sets of American Neptune (1941 through 1972); Transactions of the Royal Institution of Naval Architects (1954 through 1981); and Society of Naval Architects and Marine Engineers (1921 through 1981). Our collection of Rudder magazines are bound from 1929 through 1957 and unbound from 1970 through 1977.

To assist researchers using our magazine section, volunteers have been working to catalog and index the articles. Our set of Shipbuilder magazines, complete from 1947 through 1964, have been cataloged, as well as most of the articles in Sea and the unbound Naval Institute Proceedings. So far we have over 5,000 articles indexed according to subject classification.



GREETINGS FROM THE FRIENDSHIP FLEET:

The Friendship Fleet began with 3 gray battleships, 1 gray aircraft carrier and our red, white and blue battleship named the USS BICENTENNIAL. Our most recent addition to the fleet is the RMS TITANIC.

Our battleship's front turrets squirt water and all have claxons, horns and CBs. For TV appearances the CBs help us do formations. You may have seen us on the news, Weeknight (out of Sacramento) or on YOU ASKED FOR IT.

When we were teaching for the Los Angeles City Schools we took 3 trips during the Bicentennial years for them. Each time we carried penpal letters on our USS BICENTENNIAL from west to east coast children. We also carried letters from Mayor Bradley and the governor to their counterparts. We filmed 16mm documentaries of America's history and heritage of the waterways through the eyes of the battleship.

Now we have been invited by the British Waterway Board to take an international trip. They want us to "bring the TITANIC home escorted by the Friendship Fleet." Again, we would be carrying penpal letters from the USA to Britain.

This is our opportunity to carry the American flag and the patriotic theme we wish to express for our country. We hope we can contribute to the future generation's peace by our hands-across-the-ocean penpal letters. If we are successful in doing this trip to England we hope to go on to China.

We are most grateful that support from two fine corporations has been offered. Lykes Bros. Steamship Co., Inc. has offered the fleet transportation from New Orleans to London and return. Our other good friend, Johnson Outboard (OMC), has offered their support. We are completely powered by their engines.

We took our first trip on the flagship, USS BICENTENNIAL, from Miami to New York in 1975. 1500 miles of waterway was covered and many penpal letters delivered. Our second trip was in 1976 when we participated in Operation Sail (NY Harbor), then journeyed up the Hudson River, Lake Champlain and onto the St. Lawrence Seaway to Montreal and the Olympics. Our third trip was when we took 4 ships and toured the Cumberland River as the Nashville Navy.

The Friendship Fleet, Inc. (a non-profit corporation) is in need of funds to help defray expenses of taking a crew of 18-19 year old young people on international tours. We are considering the canals of England and China. We will be upholding Naval traditions and showing a need for more American merchant marine. We envision closer understanding between our youth and the People's Republic of China youngsters by virtue of Friendship Fleet's activities.

If you are interested in helping our endeavor your tax-deductible contribution will be appreciated.

Your membership in Friendship Fleet will bring you an attractive Membership Certificate announcing your rank in the fleet, a full year subscription to our Newsletter, and the satisfaction of helping promote patriotism, friendship and sowing the seeds of peace between young people in different countries.

Commissions (memberships) in Friendship Fleet are based on the following schedule:

Admiral	\$100	Commander	\$25
Rear Admiral	75	Ensign	20
Commodore	50	Seaman	15
Captain	35	Stowaway	10

San Diego Ship Modelers Guild
Bill Kelly-Fleming - Logkeeper
/redacted/



TO:

Fred Fraas
/redacted/

*
* San Diego Ship Modelers Guild *
* Officers for 1981 *
*
* Master: John Woodard Point Loma /redacted/ *
* Mate: Bob Crawford State College /redacted/ *
* Logkeeper: Bill Kelly-Fleming Hillcrest /redacted/ *
* Stearing Committee: Doug McFarland Mira Mesa /redacted/ *
* Al L'heureux Poway /redacted/ *
* George Oliver Santee /redacted/ *
* Bob Ross Chula Vista /redacted/ *
*
* Meetings: 3rd Friday of each month, 8:00 pm aboard the Bark Star of *
* India, on the Orlop Deck. *
* Membership: Dues for Members of the San Diego Maritime museum and *
* anyone living outside San Diego County - \$7.50. Non-Museum *
* Members - \$15.00. After July 31, 1982 dues are 1/2 for the *
* remainder of the year. *
*
