



San Diego Ship Modelers' Guild

Vol. 4 No. 7

July 10, 1980

Notes From June Meeting

Being late for the June meeting I'm not exactly sure what happened for the first two or three minutes. However, I do know that Al L'heureux and Phil Hadley, (with prompting from Val Peterson and Art Yeend) gave an excellent presentation of the uses of plexiglass in modeling. For operating models its a very functional and versatile material. If you ever consider using "plex" I'm sure any of the above could and would be of great assistance.

Models Present:

Vic Crosby	Preussen 5 mast	Scratch-solid hull - Bottle
John Woodard	USS Long Beach Propellers	Scratch CCN 9
Doug McFarland	Norske Love	Kit Plank hull
Bob Crawford	USS Arizona (BB-39)	Scratch Solid hull
R. E. Dias	Lma Beny	Kit
R. E. Dias	USS Cero Submarine	Kit
R. E. Dias	Star of India	Scratch
R. E. Dias	The Hunt Submarine	Kit
R. E. Dias	USS Arizona BB39	Kit

July Meeting

The July meeting will be the ninth meeting of the San Diego Ship Modelers Guild. The Gray Whale will be providing the "Bubbly" contributions of "munchies" will be accepted. Bring a model if you can it's nice to discuss over a friendly glass. July 18th, with a special meeting time of 8:30, for all you Tom Tom people.

California Cruise

Doug McFarland would like to finalize the reservations for the California Cruise. The cruise will be Saturday, August 23 at 6:00. Bring your check for \$13.00 per person to the July meeting. As always, 20% of the proceedings will go to the Star of India.

1980 Regatta

As you can see from the attached special edition of the Newsletter this regatta is going to be the best ever. Anywhere. We do need some help in a number of areas. We will need monitors, anyone in the guild, static or RC, to help with crowd control, registration, obstacle course and running events. In return be the first on your block to receive the San Diego Ship Modeler's Guild T-Shirt! A \$5.50 value.

The other area we need help in is in the purchasing of materials for and the construction of bouys. If you saw the bouys that I made last year with the blinking lights, you know what we need. Things are a little bit tight this year and I just can't afford to do it. What I am suggesting is that we gather the materials and as many of you as would like, will do the construction. The bouys will remain yours

and will make a nifty little addition to your workshop or display. They will blink for two years on one set of batteries. The club will borrow them for two days out of the year for the regatta. I think you'll find they're a lot of fun to build and we really could use the help. If you are interested contact me at the party or at the Gray Whale. Estimated cost: \$6.00-8.00 each. We could use as many as twenty. Also, anyone want to try a lighthouse that works?

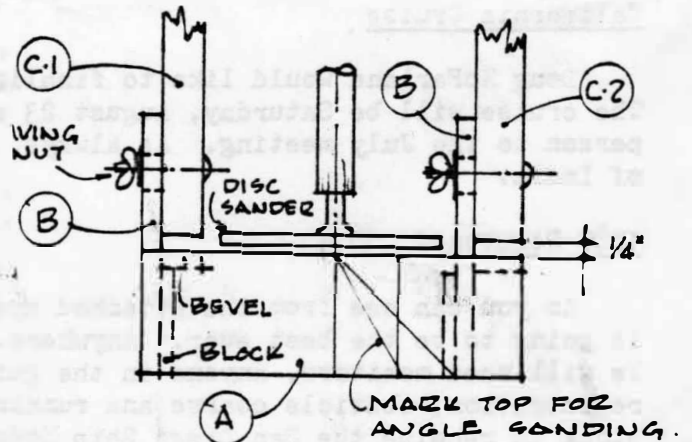
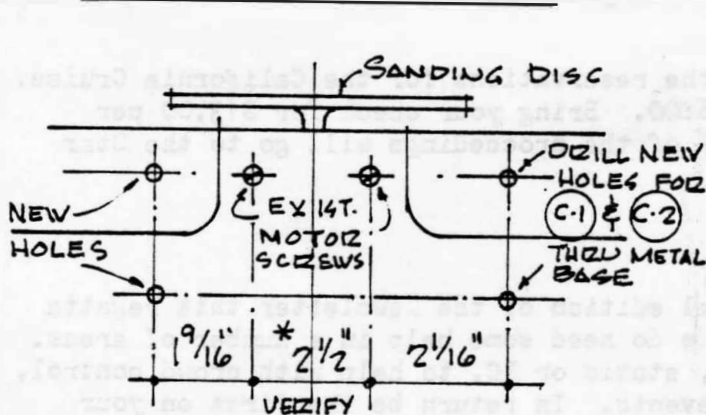
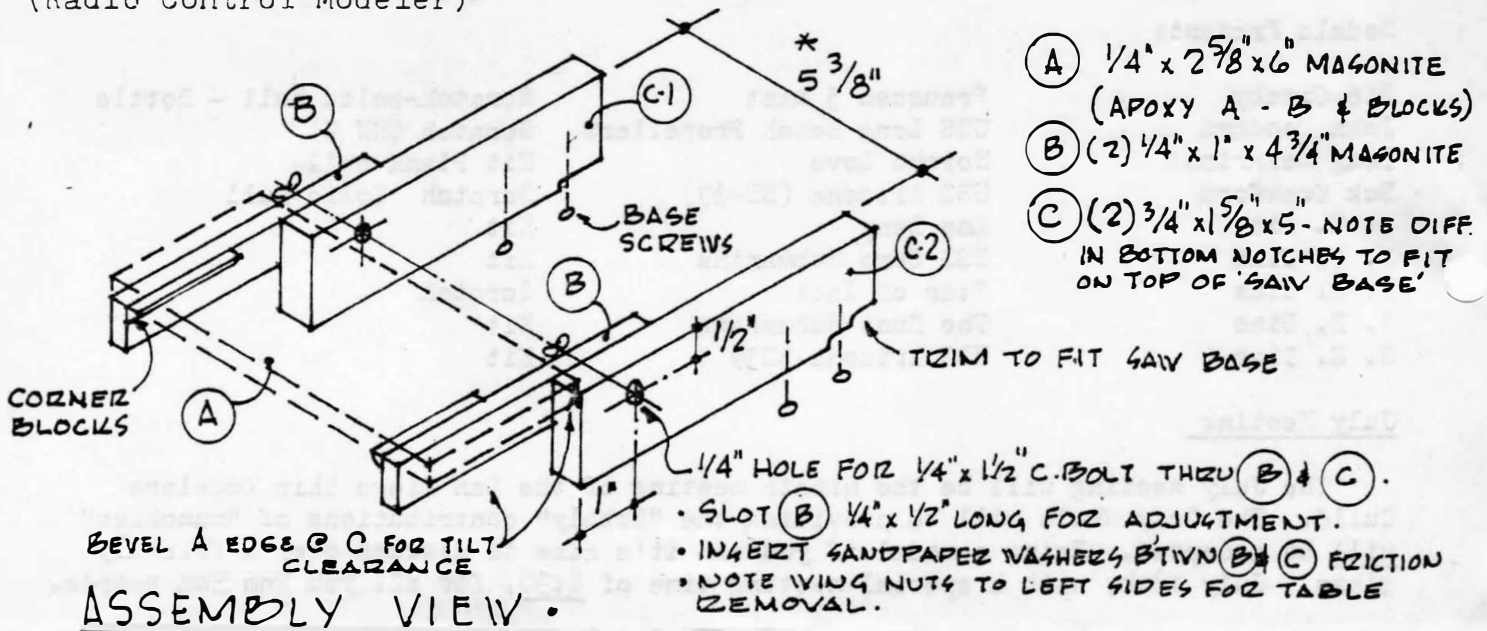
Craftsman's Corner - Thanks to Fullerton Ship Modelers Association

From Dick Roos.

DREMEL JIG-SAW SANDING TABLE

AS PUBLISHED IN 'RCM' RECENTLY, AS A WRITE-IN HANDY HINT.

(Radio Control Modeler)



(R)



San Diego Ship Modelers' Guild

Vol Special No. Special

Special Regatta Edition

The San Diego Ship Modeler's Guild Annual Regatta is scheduled for the weekend of 27 and 28 September, 1980. Plans are underway to make this the best ever regatta. We are going to make this one a two day outing with five events in which to participate and six trophies to be awarded. The regatta will be open to all non-internal combustion models, scale and non-scale, with a little something for everyone. You don't have to have the museum quality, scale aircraft carrier with operating catapults, flying aircraft and elevators to win a trophy. The five events will be: On Saturday; Blind Conning and Predicted Log, Can you give the proper orders to someone else who is operating your controls which will get your boat through an obstacle course in the time you predicted?; Straight Steering, How long will your model run in the direction you started it when you don't touch your controller?; Salvage, can you send your boat out, recover a derelict, and return in a minimum amount of time?; Bollard Pull How much will your tug really PULL when dead in the water? Test it against the machine. And on SUNDAY the event for the master model maker and seaman. Scale Precision Steering and Docking. This event will be open to Scale and Stand-off scale models only. It will be the ne-plus-ultra of model contests. The winner will be that entry which most closely approaches the museum quality reproduction of its prototype and most closely represents the actual operation of its prototype and is operated most closely to the manner in which its prototype would be expected to be operated. The ultimate test of modeling and seamanship.

Special Note: On Saturday evening we will have a general get-together and night run with lighted bouys and the rest. At present attempts are being made for camping privileges at the pond.

SCHEDULE OF EVENTS

Saturday

0830 - 0945	Registration for Saturday events
1015 - 1300(about)	Blind Conning and Predicted Log
1015 - ??	Bollard pull --- to be conducted by towing type craft as soon as possible after each vessel completes the Blind Conning Event
1015 - ???	Salvage --- to be run on completion of the Bollard Pull (for all types of craft)

1300(about) - ???

Straight Steering --- will commence upon the completion of the entire predicted log heat, and run in the same order as that event.

Saturdays events awards will be made on the completion of the Straight Steering event.

The order of running for the Predicted Log and Blind Conning event and the Straight Steering event will be determined by a random drawing of the registration numbers.

SUNDAY

Scale Precision Steering and Docking

0900	Registration
1000	First run
On Completion	Awards

ENTRY FEES

<u>Predicted Log and Blind Conning</u>	\$2.00
Salvage	\$1.00
Bollard Pull	\$1.00
Straight Steering	\$1.00
<u>SATURDAY PACKAGE DEAL All Sat</u>	\$3.50
Scale Precision Steering and Dock	\$3.00
<u>REGATTA PACKAGE DEAL All 5 events</u>	\$6.00

NOTES:

Power will be available for charging batteries

The Pond is salt water so steamers bring your own feedwater

We are trying to arrange for camping in the vicinity of the pond

If you have any questions call John Woodard at (714) 224 6964 or Bob Crawford at (714) 225 1333.

Soft drinks will be sold at the Regatta



San Diego Ship Modelers' Guild

DEFINITIONS

Scale and Stand-off Scale: Models which are miniatures of life-size vessels/ships/boats or typical classes of vessels which may have existed and that can operate at approximate scale speed.

A. Scale- A model which is a well detailed miniature of a life-size vessel ship or boat, typical of a class of vessel which does or may have existed.

B. Stand-off Scale- Same as a above but cannot stand the scrutiny of examination closer than 10 feet.

C. Freelance- A model not representing a specific ship/vessel/boat or class of vessel, but representing the builder's conception of a possible vessel.

D. Working- A model which will float properly, will move under it's own power, will answer it's helm and can be sailed (if sail).

G. Remote Control- A model which can be controlled by radio, sound waves or light beams after being released.

1. Rudder Only- Answering to left, right and straight rudder.

2. Full- A model which will respond to left and right rudder signals as well as straight running and whose engine(s) will respond to both forward and reverse.

H. Free Running- A model which will move under it's own power (or sail), which will answer it's helm, but is not controllable after the controls have been set and the model has been released. A model with a gyro rudder control or a system of programming shall be included in this class.

EVENTS

The following events will be conducted at the San Diego Ship Modelers Guild Annual Regatta in September. Regatta entries are limited to those models not powered by internal combustion engines.

SCALE PRECISION STEERING AND DOCKING

This event will be conducted on the second day of the regatta (Sunday) and will be limited to Scale, and Stand-off scale models. In addition to scoring as described below, entries will be judged in accordance with the SDSMG (San Diego Ship Modelers Guild) static scale criteria as promulgated in the regular newsletter.

1. Contestants shall be aided with an illustrative display of the course at least five (5) minutes prior to the start of a heat and may be given verbal assistance prior to and during the running.

2. Each contestant will start each heat with 100 points.

3. A contestant will have 10 points deducted for each buoy hazard that his craft strikes. If a contestant fails to negotiate a hazard in the prescribed manner and sequence and elects to proceed to the next hazard, the contestant shall then be deducted a total of 20 points.

4. Docking will be judged on a maximum of 10 points and a minimum of 0 points. Contestants will be awarded points within this range on a basis of their performance. One individual will judge all docking in each heat. Normal standards of good seamanship expected of the prototype of the entry will be the basic criteria for the docking portion.

5. Leaving and entering the slip will be judged on a maximum of 10 points and a minimum of 0 points. Contestants will be awarded points within this range on a basis of their performance. One individual will judge all boats in a heat.

6. A maximum of 10 minutes will be allowed to complete the course.

7. There shall be no bonus points for completion of the course quickly, as this is a test of seamanship skills not speed.

8. A model which fails to complete the course, shall be awarded 5 points for starting (passing the first hazard) and 5 points for each successive hazard passed.

9. Two or more buoys forming 1 hazard must be placed 3-4 feet apart.

10. The slip will be adjusted to 1.5 times the beam of the boat.

11. When docking, a boat must come along side, stop within a scale line throwing distance from the dock and then pull away. Points for this hazard will be evaluated by the event judge.

12. A maximum of 10 and a minimum of 0 points shall be awarded for running of the measured mile. Boats operating more than 25% above or below the maximum scale speed established for the entry from prototype data shall receive 0 points, with other deviations awarded proportionately.

13. All successive buoy hazards (1 or more buoys) will be placed in such a manner, as to allow a model a minimum of 20 feet of running area between them.

The following events will be open to all classes of models, with no scale requirements unless otherwise indicated, and shall be run on the first day of the Regatta (Saturday).

PREDICTED LOG AND CONNING

This event is run over a prescribed course against total elapsed time, as predicted by the contestant. Contestants shall place in the order

of total time differences. This difference shall be determined by the elapsed and predicted times. The lowest difference shall place first, etc.

1. Each contestant shall submit his predicted time to the contest officials before the start of the heat.

2. The course will be displayed to all contestants at least 10 minutes before the start of the heat. No contestant will be allowed to enter the heat after it has started.

3. Each contestant will estimate his time in minutes, seconds and tenths of seconds that he considers will be required for him to complete the course.

4. Each course will have a minimum of 5 buoy gates through which a craft must pass.

5. All times will start when a boat's stern leaves the slip and all times will stop when the boat's bow has entered the slip.

6. The captain and the crew will stand in the operating area, the captain facing the water, and the crewman with his back to the water. The crewman operates the radio on orders given by the captain, without seeing the model.

7. The judge shall award points out of a total of 50 based on his opinion of the seamanlike way the orders are given and how little deviation from a direct course is maintained. 5 points will be deducted from the total for each hazard not negotiated, or negotiated improperly. The judges should be warned to keep in mind that in full size practice, on the order "steady as you go" the helmsman will keep the ship on a compass heading and correct any wandering from the heading. The model helmsman has no compass and course corrections will have to be made on orders from the captain as he detects the model veering. Therefore, some weaving shall be unavoidable and points should be awarded on a comparative basis. It would be desirable in the interests of uniformity, to appoint only one judge for all contestants.

8. The competitor entering the model and to whom the points will be awarded may elect to act as captain or crewman.

9. Only one (1) boat at a time will be run on the course.

SALVAGE EVENT

A test of a boat and drivers ability to recover and retrieve a free floating "derelict". A derelict can be free floating model with shaft or some article standing proud of the bottom which will be capable of being snared by the line being trailed by the pickup craft.

1. The derelict will be retrieved by (a.) boats towing a dragline which will have two (2) small ball floats, one (1) at the end and another about halfway in the line. This line can be about six (6) feet long, or (b.) by pushing. Boats will circle the target in such a manner as to attach or foul the trailing line on the targets bottom.

2. Towline and dragline will be provided by the club. Contestants should ensure their boats have a towing cleat or other fixture on the stern or suitable padding if they elect to push.

3. Scores will be based on elapsed time and minimum number of maneuvers or changes of course from start to finish necessary to bring the derelict to the beach or starting point.

4. The derelict shall be placed at the same location for each contestant so that the distance from the starting dock to the derelict is the same for all contestants.

STRAIGHT STEERING EVENT

Open to any boat capable of running R/C or free. The object is to pre-set controls and aim craft at target.

1. Contestants shall set speed and rudder at start gate. If R/C he shall control and when adjusted he will place it on the ground or nearest table. The boat will run free after being released and controls will not be touched until the craft passes through the numbered gates at the end of the course. Non R/C boats can be run in this event if provisions are made to catch the model at the end of the run. After a boat with R/C passes the gate, the contestant will retrieve his radio transmitter and bring his craft back.

2. Should a tie result, a second runoff will determine the winner. High score wins.

BOLLARD PULL EVENT

The bollard pull event is open to vessels designed for towing. It will measure the force that the towing vessel can apply to a tow line while it is stationary.

1. Contestants will attach a tow line to a bollard on the measuring equipment, take the slack out and commence the pull. The maximum continuous pull registered will be recorded for score.

2. The pull recorded for each contestant will be scaled to full size, the greatest full size pull will be the winner.

3. Contestants must provide the contest officials with the documented scale of the boat.

GENERAL RULES

1. All decisions made by officials shall be binding on all contestants and shall be final.

2. Any boat failing to complete the course will be returned to the shore by the owner and a regatta official. Permission for a re-start shall be granted by the officials if justified.

C. In the event of more than one boat on the course, the right of way will be as follows:

No. 1 boat shall have right of way over #2, #3, etc.

No. 2 boat shall have right of way over #3, #4, etc.

D. Optical and/or mechanical navigational aids, other than corrective prescription lenses or sun glasses are prohibited for use by contestants.

E. Free Water time- only those boats which are competing in an event shall operate in the designated course area. Operation for boat check out shall take place in the designated practice area only. Only those boats which have been issued operating flags corresponding to

their frequency shall turn on their transmitters. cause the operator to lose the unit. He should be aware of all the hazards and course directions before he starts. Should he make a wrong turn on the course, only the timer shall make note of it and call it to his attention so that the error is immediately corrected. This mistake, if intentional, should carry the same penalty (disqualification) as a stop or back-up error. A craft must proceed over the course in a direct route from buoy to buoy and not wander or make extra maneuvers not indicated on the course sheet.

G. Buoy Markings: All buoys to be round and only vertical marking bars shall be used.

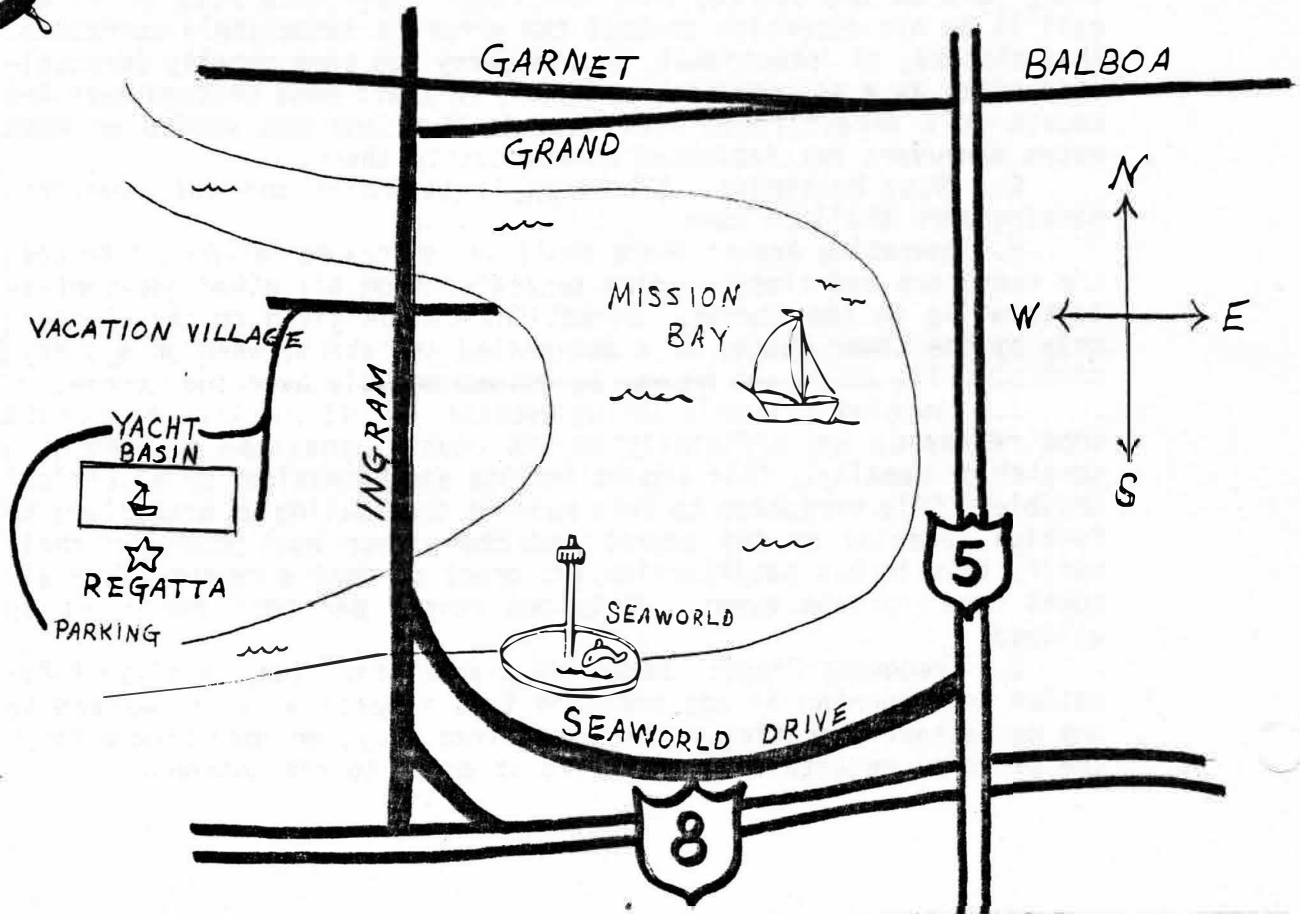
H. Operating Area: There shall be an area so marked off to keep the operators and timers-judges separated from all other non-contestants while on the course. Directions can be given to the operator only by the timer-judge, or a designated assistant, when on a precision steering event and he may be guided audibly over the course.

I. Touching of Models during events: Any malfunction of a craft once released, and officially on the course, shall be counted as a scratch or penalty. This should include any mechanical or electrical trouble. Only exception to this rule is the fouling of propellers by foreign material on the course and the pickup boat operator shall verify this to his satisfaction and grant or deny a re-run after all boats have run the event. Only one re-run per boat per event is allowed.

J. Frequency Flags: Immediate disqualification, or disqualification from running in any event in this regatta will be awarded to any contestant operating on the wrong frequency, or operating without the Official regatta frequency flag attached to his antenna.



San Diego Ship Modelers' Guild



 SAN DIEGO SHIP MODELERS GUILD
 Elected Officers
 1980

Master	Doug McFarland	/redacted/
Masters Mate	Al Lheureux	/redacted/
Logkeeper/Purser	Bob Crawford	/redacted/
Steering Committee	Doug McFarland	/redacted/
	Al Lheureux	/redacted/
	Bob Crawford	/redacted/
	John Woodard	/redacted/
	Bob Ross	/redacted/
	Earnie Jimenez	/redacted/

Meetings: 3rd Friday of each month at 8:00 PM aboard the Star of India -Orlop deck.

Membership: \$6.00 per year for members of the Maritime Museum Association of San Diego, \$12.00 for all non-members. Out-of-state residents may join for \$6.00.

The Guild was founded in 1971 by Bob Wright and the late Russ Merrill.

Advance Registration Notification
1980 San Diego Ship Modeler's Guild
Regatta

Name _____

Address _____

Events

Bollard Pull _____

Predicted Log and Blind Conning _____

Straight Steering _____

Salvage _____

Scale Precision Steering and Docking

Type of model you intend to enter _____

Frequency on which you desire to operate _____

Alternate frequency is necessary _____

Providing the SDSMG with advance notification of you intent to enter will assist us in making the 1980 Regatta the best ever. Just fill this form out and mail it to the address on the back. Your help will be appreciated

John Woodard